

NPS RESOURCES



NPS RESOURCES

INFORMATION TECHNOLOGY AND COMMUNICATIONS SERVICES

NPS Systems

Networks	Provider	Site
EDU	CENIC	nps.edu
HPR	CENIC	hpr.nps.edu
MIL	DREN	nps.navy.mil
Public (for guests)	CENIC	Public.nps.edu
DoDNet	NPS	Monterey DoD Interconnect: DMDC, PERSEREC, DLIFLC, NRL, FNMOC, NPS
"PACBell" Commercial ISP	AT&T	Research Network
Classified Networks	Various	Various

User Accounts

Type	FY15	FY16	FY17*	FY18	FY19
Resident Students	1,860	1,686	1,427	1,608	1,668
DL Students	1,383	1,556	1,623	1,645	1,558
Faculty	754	730	550	553	735
Staff	810	794	1,168	1,234	841
Contractors	292	272	468	514	397
Total Accounts	5,099	5,038	5,236	5,554	5,199

Education Technologies

Description	FY15	FY16	FY17	FY18	FY19
Learning Resource Center application	289	274	274	277	277
Video Bridge Ports	80	80	80	80	80
ISDN Channels available to Video Bridge	0	0	0	0	0
ISDN Gateway Channels	253	253	253	253	253
VTC Equipped Spaces	42	36	57	53	43
VTC Meeting Rooms	28	14	18	18	19
VTC or VTE Specialized Classrooms & Studios	15	24	39	39	24
Multimedia presentation systems	133	130	130	130	130
Class hours recorded & streamed via the Internet	6,012	6,416	6,302	6,359	3,388
Participant hours attended via web-conferencing system (beginning FY14)	102,341	104,211	106,641	108,287	189,995
Logins to the learning management system (not distinct users)	1,692,040	1,013,306	1,037,324	1,111,503	1,131,434

Source: Information Technology and Communications Services

*Data source changed to student information system

¹ This reflects the total number of available Video-conferencing facilities. Previous editions only accounted for facilities managed by ITACS.

² Class hours delivered through web-conferencing consists of expected growth and an increasing trend away from streaming classes via the Internet

INFORMATION TECHNOLOGY AND COMMUNICATIONS SERVICES

High Performance Computing (HPC)

Description	FY15	FY16	FY17	FY18	FY19
HPC supercomputer processors	4,290	4,698	5,166	4,516	6,140
HPC supercomputer users	356	327	180 ^{§§}	474	688
HPC disk space	2 PB	3.2PB	3.2 PB	3.2 PB	3.2 PB
Linux computers on campus	300 [§]	286 [§]	242 [§]	224	173 [§]
Linux users on campus	600	722	748	704	756

[§]Decrease due to virtualization

^{§§}Decrease due to expired account cleanup

Corporation for Education Network initiatives in California (CENIC)

State research and education network (CalREN) links University of California campuses and system, California State University campuses and system, University of Southern California, Cal Tech, Stanford University and the Naval Postgraduate School, as well as providing connectivity to other national high-speed networks such as LambdaRail and Internet2.

Defense Research Engineering Network (DREN)

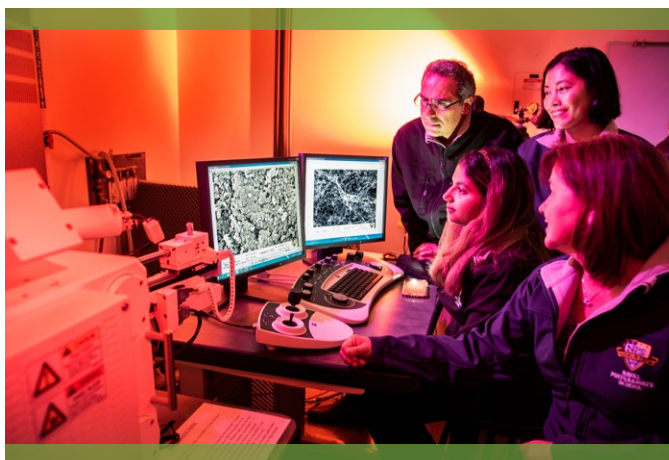
DOD's recognized research and engineering network. Robust, high-capacity, low-latency nation-wide network that provides connectivity between and among the HPCMP's geographically dispersed high performance computing (HPC) user sites, HPC Centers, and other networks.

Monterey Peninsula Department of Defense Net

Regional DoD consortium with physical infrastructure linking Fleet Numerical Meteorology and Oceanography Center (FNMOC), Defense Manpower Data Center (DMDC), Naval Postgraduate School (NPS), Naval Research Lab, and Defense Language Institute-Foreign Language Center (DLI-FLC).

University and Defense Partnership Navy Higher Education IT Consortium

Naval Postgraduate School, Naval War College, and Naval Academy CIO's working to develop higher education-based collaborations to maximize effectiveness of technology use at each of the three institutions.



Source: Information Technology and Communications Services

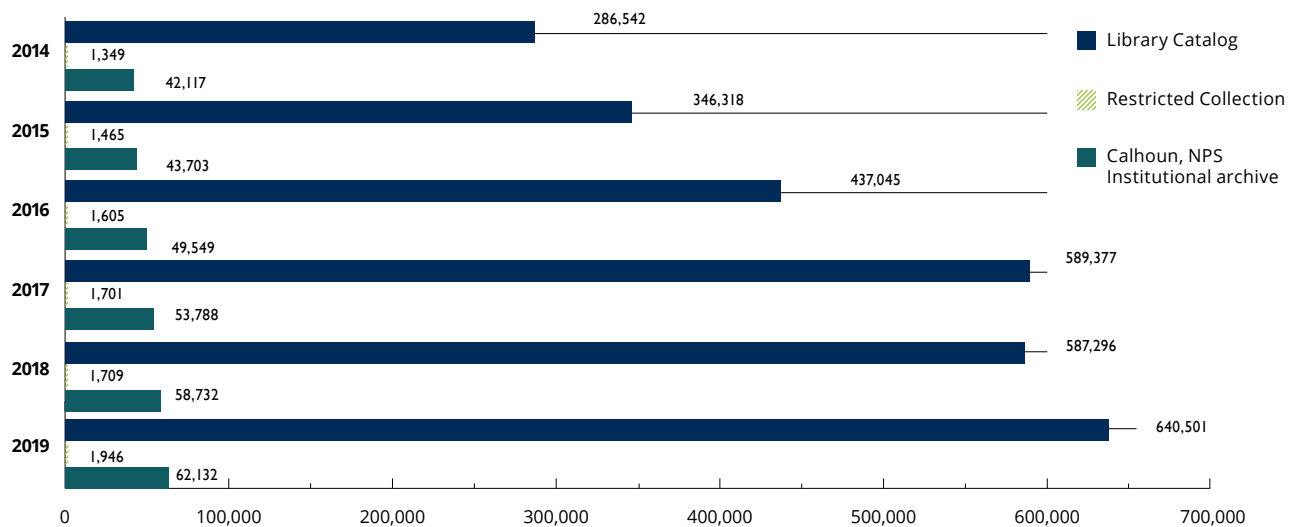
DUDLEY KNOX LIBRARY

Quick Facts

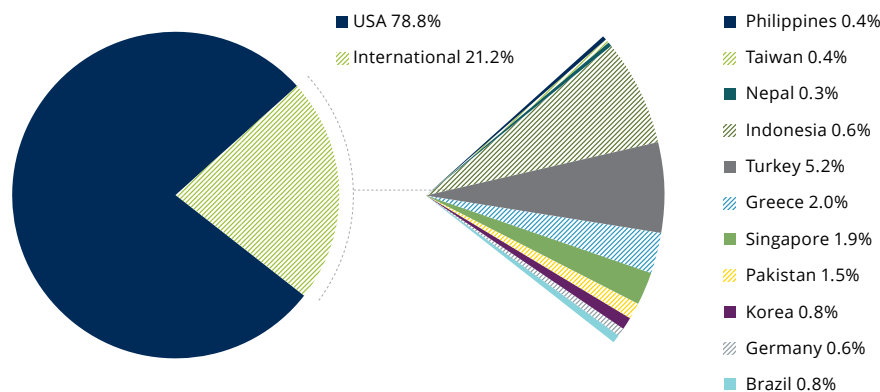
DESCRIPTION	2015	2016	2017	2018	2019
Library staff FTE	28	27	26	25	21.5
Average weekly hours (Sunday-Saturday); extended hours during finals weeks	78	78	78	78	78
eResources available in library catalog (books, journals, reports & more)	391,486	377,192	589,377	587,296	640,051
eResources available in Restricted Collection (Restricted NPS Thesis, NPS Reports, etc.)	1,465	1,605	1,701	1,709	1,946
eResources in NPS Archive: Calhoun	43,703	49,549	53,788	58,732	63,132
On-site Library visits	313,199	280,376	281,393	272,037	260,761
Average daily library visits (on-site)	909	808	842	829	1,014
Average daily library visits (virtual)*	--	4,737	4,813	1,746	2,011
Hours students used collaborative study spaces	>8,200	8,164	24,051.75	28,267.25	28,851
Students receiving library instruction	2,746	2,435	2,501	2,432	2,191
Library instruction sessions offered (face-to-face and virtual)	146	126	138	149	134

*2018 changed to Google Analytics Sessions for counting virtual visits

Number of Electronic Resources



NPS Alumni Registered for AY2019 Library Access Top Countries (N=3,530)



Source: Dudley Knox Library

Alumni

YEAR	TOTAL
2009	1222
2010	1540
2011	1851
2012	2098
2013	2430
2014	2754
2015	3040
2016	3279
2017	3530
2018	3975
2019	4250

ACADEMIC FACILITIES

MAC LAB (LAB)

4

Lab equipped with networked or stand-alone computers for Academic or Research use by students and faculty which contains Apple Mac Pros with a dual boot Mac OS and Windows configuration.

MULTI O/S (LAB)

2

Lab equipped with networked or stand-alone computers for Academic or Research use by students and faculty where multiple combinations of operating systems and hardware are possible.

UNIX/LINUX (LAB)

8

Lab equipped with networked or stand-alone computers for Academic or Research use by students and faculty using UNIX or LINUX operating systems.

AUDITORIUM (AUD.)

5

Large Auditorium facilities designed for Conferences and similar large group of audiences.

CONFERENCE ROOMS (CONF.)

79

Conference rooms designed for classroom and/or conference use for a small working group or audiences.

BASELINE CLASSROOMS (CR)

69

Traditional baseline classroom with multi-media projection system and instructor computer. This is the minimum baseline technology for all traditional classrooms.

GLASGOW HALL

GLASGOW EAST

GLASGOW WEST

DUDLEY KNOX
LIBRARY

REED HALL

INGERSOLL HALL

WATKINS HALL

ME LECTURE HALL

ROOT HALL

HALLIGAN HALL

CTR FOR CIVIL
MILITARY RELATIONS

HERRMANN HALL

BULLARD HALL

QUAD AUDITORIUM

SPANAGEL HALL

KING HALL

LRC WINDOWS (LAB)

13

Public Learning Resource Centers. Equipped with networked computers for student use, instructor computer, networked printer. Commonly used as a computer classroom on an irregular basis.

SECURE LABS (LAB)

7

Classified Laboratories

VTE STUDIOS (VTE)

6

Video tele-education teaching studio. Enhanced version of Type 3a VTE Classroom, but without seats for local students. Used for VTE programs with only remote students. Includes large rear- screen projection system.

VTE CLASSROOMS (VTE)

3

Video tele-education classroom. Traditional style classroom augmented with video-conferencing technology, specialized video display system, instructor PC, document camera, VCR, microphones, loudspeakers, and audiovisual routing matrix.

COMPUTER-EQUIPPED CLASSROOMS (CR)

33

Baseline classroom or lab with networked PCs and AC at each student seat.

TEACHING ENHANCED ACTIVE LEARNING (CR)

2

Classroom with shared power and network connectivity at student stations, strategically placed plasma displays and ability for students to project from study stations to displays.

SECURE CLASSROOMS (CR)

12

Classified classrooms with baseline AV capabilities in SCIF and STBL.

VTC EQUIPPED CLASSROOM (VTC)

10

Traditional or computer equipped classrooms with videoconferencing capability. Not equipped for VTE. NOTE: This is an enhancement to the existing facilities and does not represent additional rooms.

Source: Facilities Management (2014)