



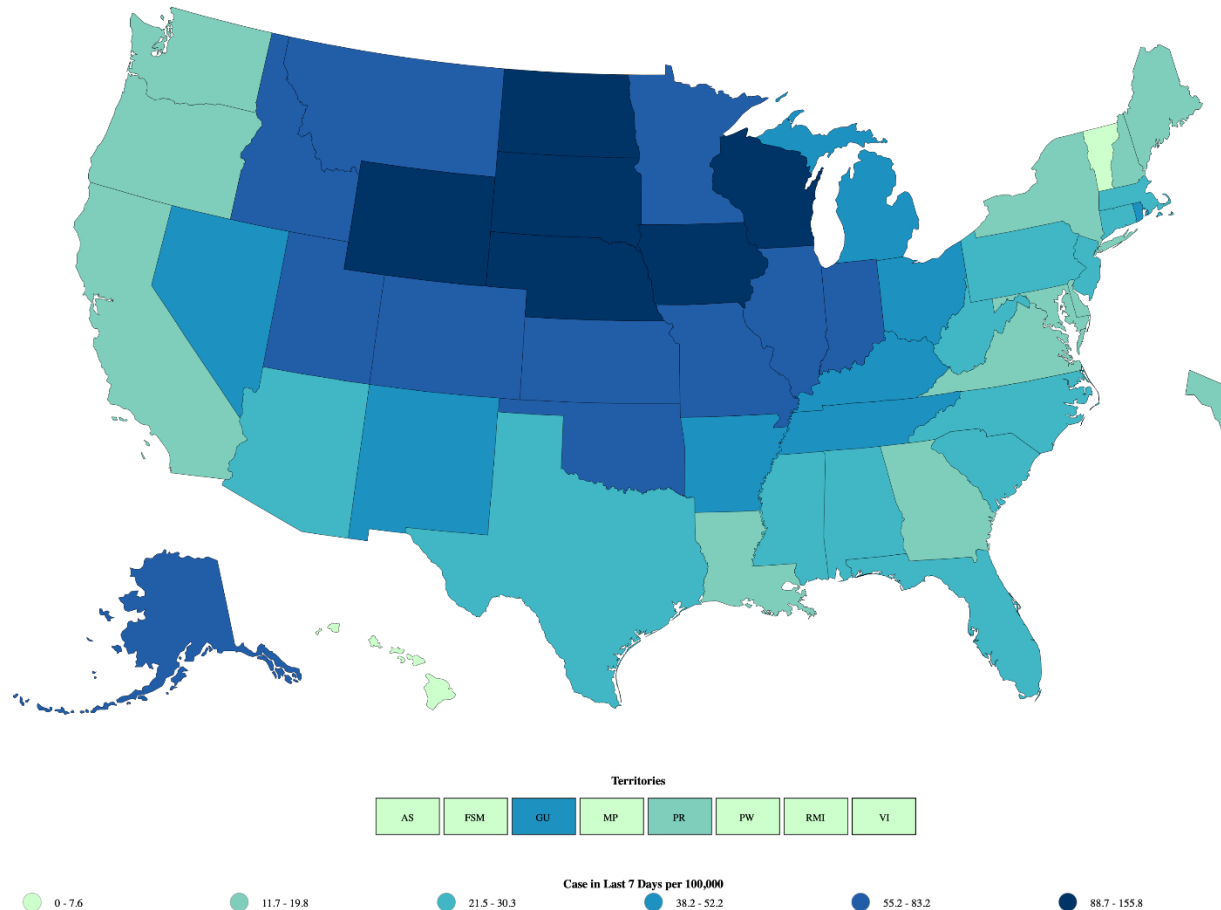
NAVAL
POSTGRADUATE
SCHOOL

NPS COVID-19 Planning Update





NPS COVID-19 Planning Update



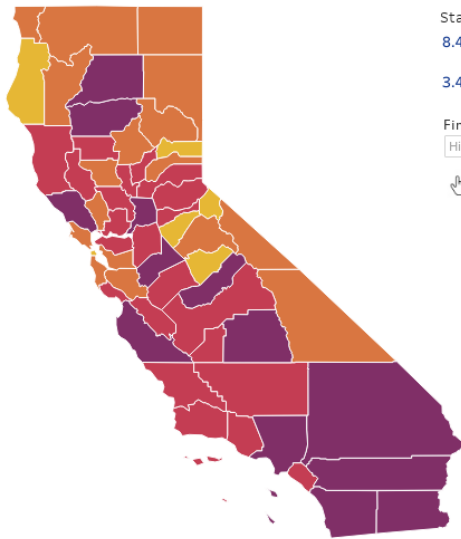
TOTAL CASES
9,913,553
+105,142 New Cases

CASES IN LAST 7 DAYS PER 100K
33

TOTAL DEATHS
237,037
+490 New Deaths



NPS COVID-19 Planning Update



Statewide metrics
8.4 New COVID-19 positive cases per day per 100K

3.4% Positivity rate

Find a county
Highlight County

Click on the map for updated metrics

Measure	Higher Risk → Lower Risk of Community Disease Transmission***			
	Widespread Tier 1	Substantial Tier 2	Moderate Tier 3	Minimal Tier 4
Adjusted Case Rate for Tier Assignment** (Rate per 100,000 population* excluding prison cases^, 7 day average with 7 day lag)	>7	4-7	1-3.9	<1
Testing Positivity^ (Excluding prison cases^, 7 day average with 7 day lag)	>8%	5-8%	2-4.9%	<2%

Monterey County

Close X

Widespread*

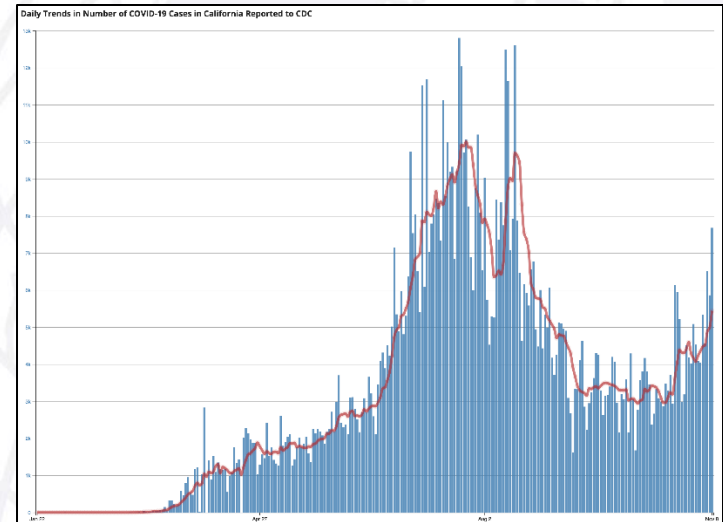
Many non-essential indoor business operations are closed

10.5 New COVID-19 cases per day per 100K
10.0 Adjusted case rate for tier assignment

4.4% Positivity rate
7.6% Health equity quartile positivity rate

3 weeks prior	2 weeks prior	1 week prior	Current
10/20	10/27	11/4	11/10
Widespread	Widespread	Widespread	Widespread

*See California Blueprint Data Chart for tier determination



- NSA Monterey remains in HPCON C-
- Military personnel assigned to NPS are still subject to the NAVNORTH order which restricts activities
- Holiday travel and leave plans should take local health conditions into account



NPS COVID-19 Planning Update

- **What to expect for winter quarter**
 - **NPS COVID-19 mitigation measures and procedures have been effective**
 - **Expansion of on-campus and face-to-face interaction opportunities**
 - **Distance Learning education modality w/ exceptions for classified content and labs**
 - **Introduction of “NPS-flex” blended format for select courses**
 - **Synchronous instruction delivered to both in-person and virtual students**
 - **All-voluntary in-person participation (faculty and students)**
 - **Student schedule deconfliction**
 - **Classroom requirements (HVAC, capacity, technology, cleaning, logs)**
 - **Face coverings mandatory, enhanced screening checks**
 - **Pilot course survey feedback was positive for both groups**
 - **Scheduled use of on-campus facilities in a safe manner**
 - **Study spaces, classrooms, breakout rooms, outdoor spaces, offices**