



**NPS Fleet Concentration Areas**  
QUARTERLY NEWSLETTER  
NAVAL POSTGRADUATE SCHOOL- APRIL 2020

# Distance Learning

## OFFERING OVER 40 DISTANCE LEARNING CERTIFICATE & MASTERS DEGREE PROGRAMS

Online applications are currently being accepted for the following programs. Deadlines for Applications vary, but are rapidly approaching! **Tuition is free for Naval Officers.**

### PROGRAMS STARTING IN 2020:

#### MASTERS DEGREE PROGRAMS:

**Master of Systems Analysis Degree Program (MSA, Curriculum 363, starts Fall/Spring):**  
The MSA program is designed to meet the needs of the Navy and other services in the Department of Defense (DoD) for technical graduate education in systems analysis as a basis for aiding key decisions on force requirements, weapons systems, and other defense matters. Students acquire foundation skills and hands-on experience in all aspects of analytical studies. MSA grads earn the Navy 3210P subspecialty code, Operations Research Analysis. NAVADMIN 123/17  
Point of Contact: [MSADEGPROG@NPS.EDU](mailto:MSADEGPROG@NPS.EDU) or [GEACSTUDCOORD@NPS.EDU](mailto:GEACSTUDCOORD@NPS.EDU)

**Executive Masters of Business Administration (EMBA, Curriculum 805 mil, 807 civ, starts Fall/Spring):** This program is a defense-focused general management program for senior Department of Navy officers and senior Department of Navy civilians. The program design and course work capitalizes on the current managerial and leadership experience of program participants. The EMBA is a 24-month, part-time, distance learning degree program. Classes meet once a week, approximately 6-7 hours per day, depending on course units. NAVADMIN 057/17  
Point of Contact: [HTARABIS@NPS.EDU](mailto:HTARABIS@NPS.EDU)

**Mechanical Engineering for Nuclear Trained Officers (Curriculum 572, starts quarterly):**  
This program provides the opportunity for nuclear trained naval officers (who have successfully completed Naval Nuclear Power School, officers course) to obtain a Master of Science in Engineering Science with a major in Mechanical Engineering MSES (ME), while on sea or shore duty. This is a non-thesis program, but a capstone research or design project is required. This Distance Learning program is offered primarily via asynchronous course packages, in which pre-recorded lectures are provided to students on DVD's and the student communicates directly with the professor. Synchronous course options are offered via VTC when available.  
Point of Contact [MSESMEDL@NPS.EDU](mailto:MSESMEDL@NPS.EDU)

**Systems Engineering Non-Resident Master's Degree Program (SENonResDeg, Curriculum 311, starts quarterly):** The SE Non-Resident Degree Program is designed for DoD organizations faced with a wide range of systems engineering and integration challenges. These commands can now partner with NPS to educate and train engineers with tools and technologies relevant to their work, resulting in employees with greater knowledge and expertise to enable them to better meet the needs of their customers. This is a 24-month, part-time, distance learning degree program  
Point of Contact: [SSCERTPROG@NPS.EDU](mailto:SSCERTPROG@NPS.EDU) or [GEACSTUDCOORD@NPS.EDU](mailto:GEACSTUDCOORD@NPS.EDU)

#### CERTIFICATE PROGRAMS:

**Cyber Warfare Graduate Certificate Program( Curriculum 288, starts quarterly):**  
This program provides students with a technical foundation that prepares them for assignments related to research and management of wired and wireless cyber warfare systems, and for leadership roles in the area of cyber warfare. This coherent program provides a mixture of instruction and computed-based laboratories which offer students the opportunity to explore concepts and investigate applications in cyber warfare areas.  
Point of Contact: [RCRISTI@NPS.EDU](mailto:RCRISTI@NPS.EDU)

**Anti- Submarine Warfare (ASW) (Curriculum 274, starts Spring):** This certificate provides a science and engineering foundation which covers fundamental concepts in our areas: Physical Oceanography, Signal Processing, operations Research, and Engineering Acoustics. These subjects are the educational cornerstone for this highly interdisciplinary certificate program. Point of Contact: [RCRISTI@NPS.EDU](mailto:RCRISTI@NPS.EDU)

**Human Systems Integration (Curriculum 262, starts Fall) Human Systems Integration (HSI):** This program acknowledges that the human is a critical component in any complex system. It is an interdisciplinary approach that makes explicit the underlying tradeoffs across the HIS domains (and, in particular, manpower, personnel, training, and human factors engineering( to optimize total system performance with the constraints of cost, schedule, and risk. Point of Contact [HSICERTPROG@NPS.EDU](mailto:HSICERTPROG@NPS.EDU) or [GEACSTUDCOORD@NPS.EDU](mailto:GEACSTUDCOORD@NPS.EDU)

**Space Systems Certificate Program (Curriculum 273, starts in Fall/Spring):**  
Space assets are essential to modern warfare. The Space Systems Certificate provides the foundation to understanding the integration of space capabilities across combined armed forces, involving networks, sensors, and weapons. The certificate course sequences covers MILSATCOM, remote sensing, physics of the space environment, and orbitology, providing knowledge, and insight to exploit the combat advantage provided by current and future space-based resources.  
Point of Contact: [SSCERTPROG@NPS.EDU](mailto:SSCERTPROG@NPS.EDU) or [GEACSTUDCOORD@NPS.EDU](mailto:GEACSTUDCOORD@NPS.EDU)

For more information contact Ashley Burrow

[amdecarl@nps.edu](mailto:amdecarl@nps.edu) 619-556-3289  
3975 Norman Scott Road, Suite 102,  
NBSD Bldg 3280, C Wing  
San Diego, CA 92136

To apply please visit:

<http://www.nps.edu>

Refer to:

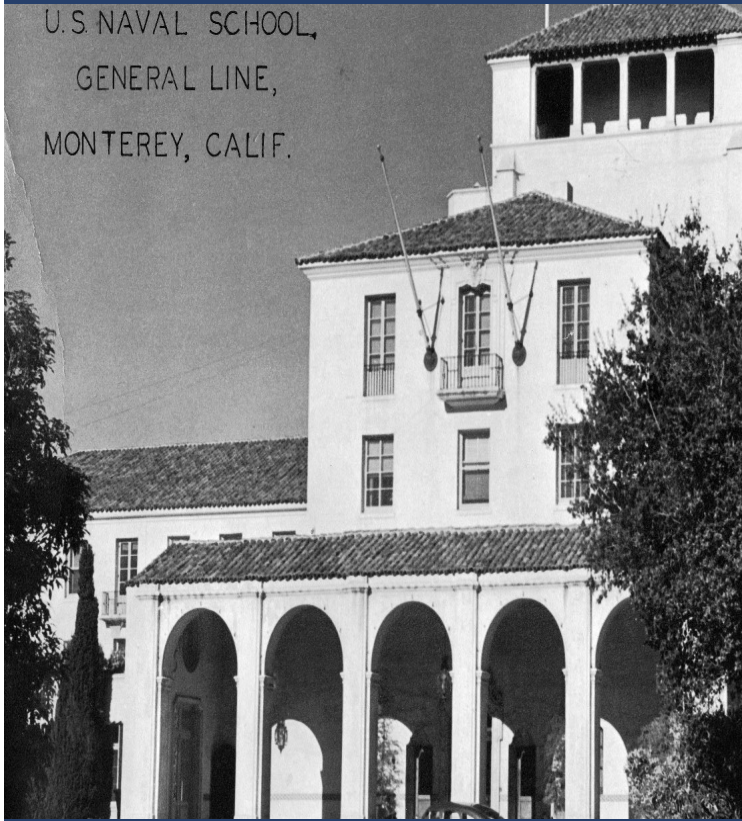
NAVADMIN 250/16 OF 041322Z OCT 17



# NEWSLETTER

NAVAL POSTGRADUATE SCHOOL – FLEET CONCENTRATION AREAS  
APRIL 2020

U.S. NAVAL SCHOOL,  
GENERAL LINE,  
MONTEREY, CALIF.



## RESIDENT PROGRAM IN THE SPOTLIGHT:

### Electrical and Computer Engineering (ECE):

The Electrical and Computer Engineering (ECE) department was designed to keep up with the uncertainties and challenges of a rapidly changing technical world. As a student in ECE, you will tailor your curriculum to a variety of disciplines to include cyber systems, electrical warfare, electrical ships power systems, and communications. You will conduct state of the art research that will have a direct application to your military career and beyond. VADM Jan Tighe, former Deputy CNO for Information Warfare, Director of Naval Intelligence is an ECE graduate. She states, “the demand signal from the leadership across the Navy has never been as strong as the demand we’re getting for the skills that you are developing here.” The ECE department offers certificate and degree programs, including the Masters of Science in Electrical Engineering (MSEE) which is accredited by the Engineering Accreditation Commission of ABET.

Point of Contact: MONIQUE P. FARQUES, Ph.D  
Phone: (831)-656-2859 Email: [FARQUES@NPS.EDU](mailto:FARQUES@NPS.EDU)

For more information about Distance Learning programs offered visit:  
<https://nps.edu/web/ece/academics>

## DISCOVER NPS

### *NPS Continues Prep to Start Spring Quarter Classes Online*

As the Naval Postgraduate School (NPS), and the world, continue taking measures to mitigate the reach of the novel Coronavirus pandemic, unprecedented efforts are underway to ensure the university continues on course to deliver excellence in advanced education, anytime and anywhere.

Under a mandate by NPS President retired Vice Adm. Ann E. Rondeau, all residential unclassified classes will transition to [distance learning](#) (DL) when the Spring Quarter launches, March 30. Conducting coursework online, for as long as it needs to, will afford the university its best opportunity to preempt the virus’ transmission throughout the NPS community, treating the state’s guidelines on shelter in place and social distancing with due urgency.

Face-to-face instruction is most often the best option for many kinds of learning, especially laboratory, science and technology education, and the special interactions of our practitioner-students and faculty. However, with opportunity in the circumstances, the campus moved to support the transition to nearly total DL quickly and expertly.

The university boasts a long history of DL education, dating back to the mid-1990s, but it’s the relatively new [Teaching and Learning Commons](#) (TLC) that is serving as a central hub for communication, information, references, and web-based resources and tools to support the transition.

For those faculty members new to virtual classrooms, the TLC is offering workshops and individual coaching to utilize Zoom video conferencing, the [Sakai](#) collaborative learning management system and other DL technologies.

BY Matthew Schehl

The keyword in this process is flexibility which, as Rondeau noted, affords faculty and students the ability to successfully meet the demands of a new normal. “Faculty are free to decide how best to teach their courses online,” she said. “While we prefer you teach synchronously during your regularly scheduled class times, we understand that this may not be feasible for all faculty.

“These are unprecedented times and I am very proud of how everyone is coming together to support each other professionally and personally,” she continued. “This is what makes the NPS community so special. Take care, be safe and we’ll get through this as a team!”