

# JIFX 24-2

# Coordination Calls

**Event Dates: 5 – 9 February 2024**

*Slides will be posted on website following this call*

*Recording available by request ([Ashley.book@nps.edu](mailto:Ashley.book@nps.edu))*



# Agendas

## Call #1

---

JIFX Team  
Introductions

---

Event Overview

---

Registration & Gate  
Access

---

Q&A

## Call #2

---

Logistics

---

Registration & Gate  
Access

---

Safety

---

Networks &  
Frequency

---

Q&A

## Call #3

---

Event Logistics &  
Reminders

---

Vulcan Scout Cards

---

Experiment  
Introductions

---

Q&A

## Call #4

---

Reminders

---

Schedule of Events

---

Coordination  
Opportunities

---

Q&A

**Dr. Mike Richardson**, JIFX Director

**Ashley Book**, Event Operations

**Jonathan Coon**, Data Management

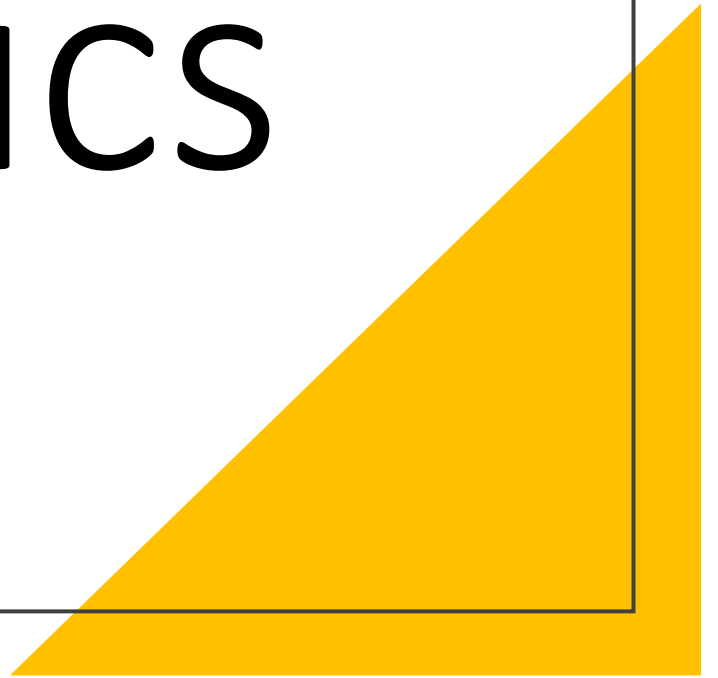
**Aurelio Monarrez**, Air Operations

**Joseph Lukefahr**, Tech & Network Management


**Dirk Hale**, Camp Roberts Facilities

JIFX Team

# Event Logistics



# General Location

- McMillan Airfield at Camp Roberts
  - Closest Town: Paso Robles, Atascadero, San Luis Obispo
    - Hotels, Vacation Rentals, etc.
  - Closest Airports: San Luis Obispo (45m), Monterey (1h30m), Bakersfield (2h), San Jose (2h15m), SF (2h40m)
- 
- A large yellow triangle is positioned in the bottom right corner of the slide, pointing towards the top right.

# Event Location

**NPS Field Laboratory at McMillan Airfield**  
Federal government office

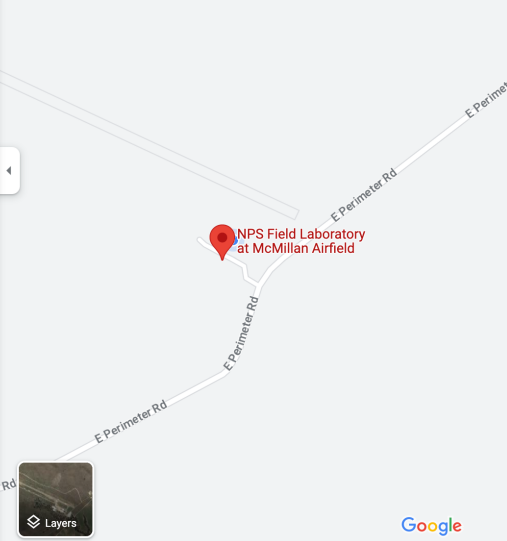
Overview About

Directions Save Nearby Send to phone Share

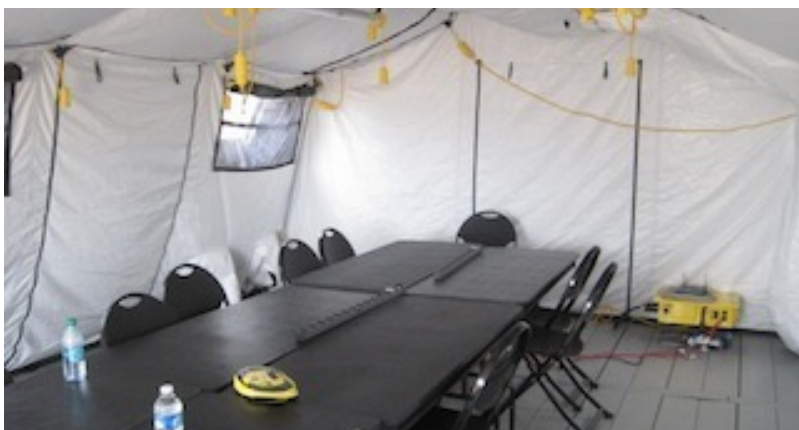
California 93446  
P68P+4C Lake Nacimiento, California

Send to your phone  
Claim this business  
Add a label

Suggest an edit







# Camp Roberts Facilities: McMillan Airfield

---



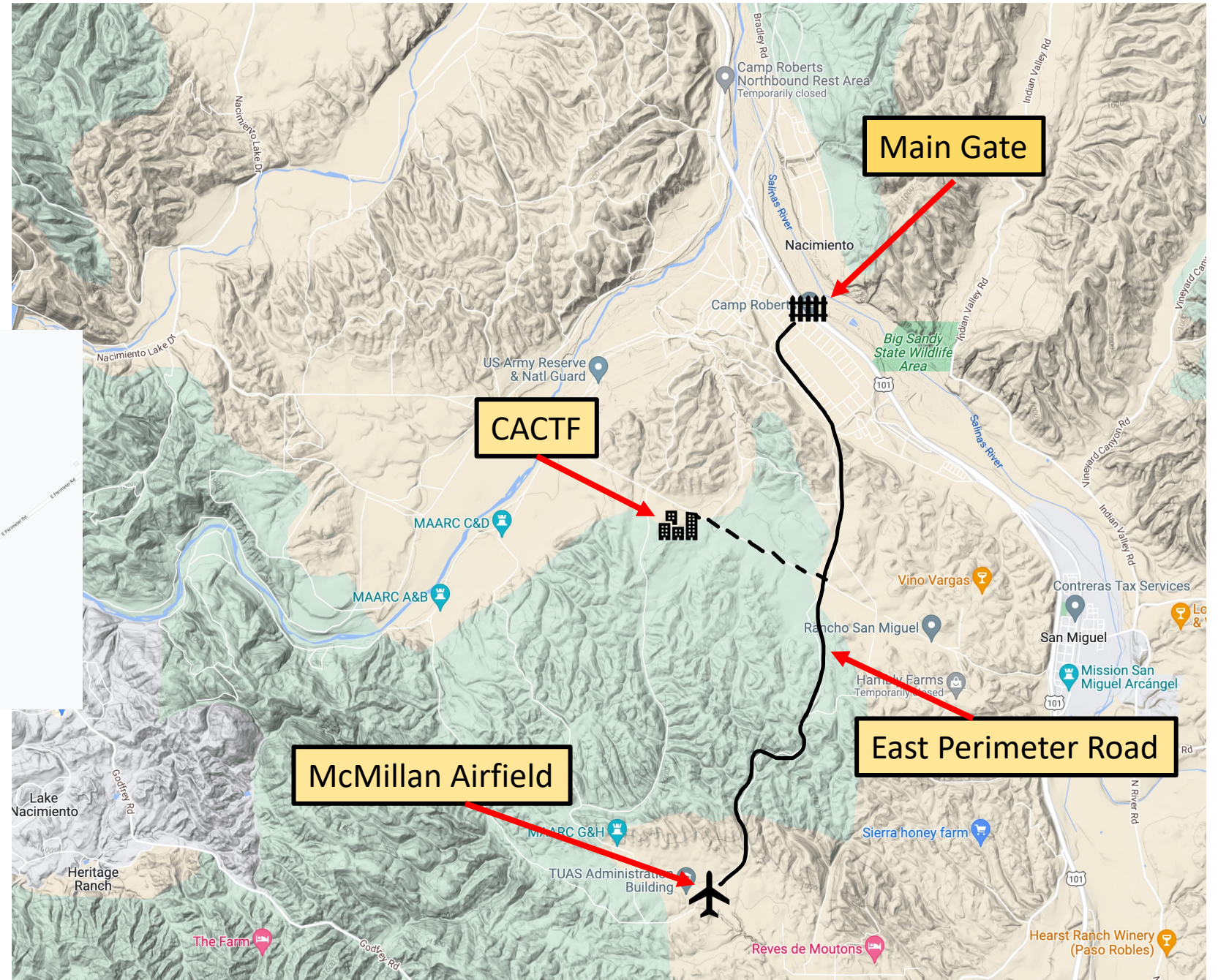
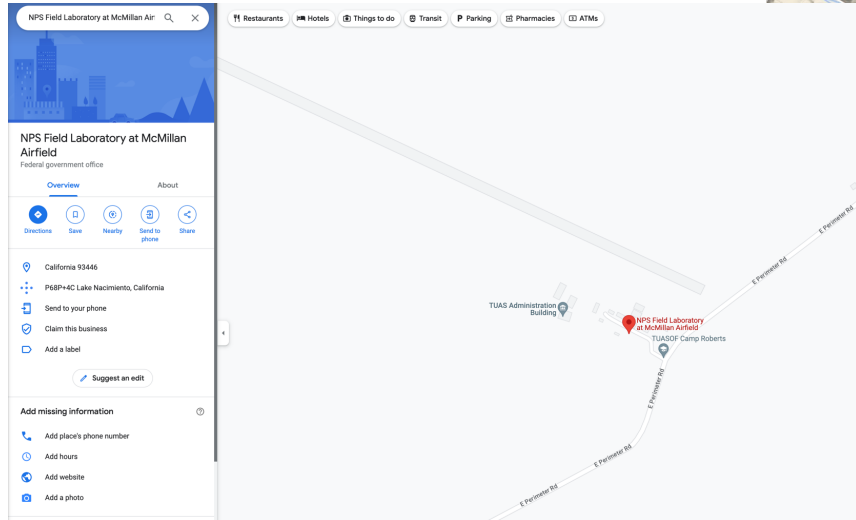


## Camp Roberts Facilities: Combined Arms Collective Training Facility (CACTF)

26-acre full-scale urban operations training facility including a mock church, police station with underground jail, three-story hotel, businesses, residential buildings, underground tunnels, and a rubble pile.



# Camp Roberts Orientation

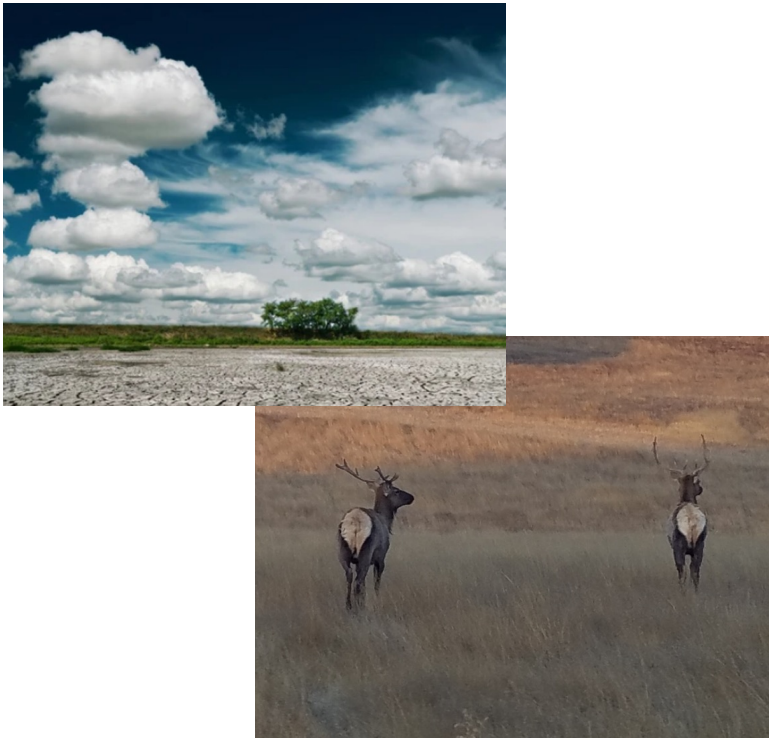


# Registration & Gate Access

- **Registration is required for all participants**
  - [www.nps.edu/web/fx/register](http://www.nps.edu/web/fx/register)
  - Be sure to scroll all the way through the safety brief!
- Non-US Citizens Registration deadline: 19 January



# Event Info



- Weather
  - **Rainy and windy**
  - Fires are a major concern
- Emergencies
  - **Emergency Services are 30-45 minutes away**
  - Emergency Phone Numbers will be on the back of all participant name badge
- Wildlife
- Food options limited: bring what you need
- Hazmat: *pack out what you bring in!*



# Event Info

## Photography:

- Okay to photograph/video your own equipment
- Ask for permission before capturing imagery of any other experiments/people
- No photos of personnel in uniform
- No photos of sensitive sites



# Shipping

## **Parcel Service (Individual packages, less than 150 lbs)**

NPS Field Laboratory - McMillan Airfield

Attn: (\*Your Company / Your Name\*)

Bldg 914, Shipping & Receiving

Camp Roberts, CA 93451-5000

Ph 805-227-1314

## **Directly to the Airfield: Freight**

NPS Field Laboratory - McMillan Airfield

Attn: (\*Your Company / Your Name\*)

McMillan Airfield, East Perimeter Rd

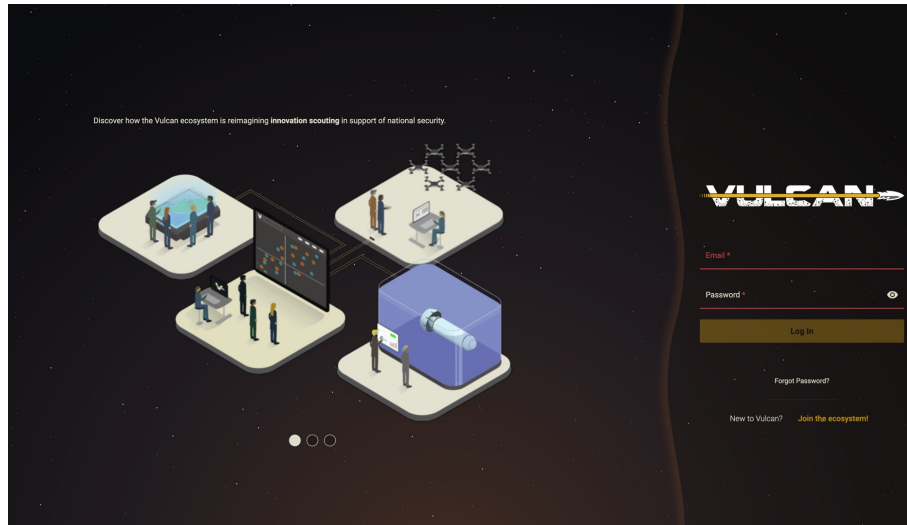
Camp Roberts, CA 93451-5000

Ph 805-227-1314

Addresses are posted on  
the website!

[www.nps.edu/fx](http://www.nps.edu/fx)

# Vulcan



Vulcan is an innovation scouting platform that serves a diverse ecosystem and provides networked capabilities for the discovery and assessment of capabilities of interest to U.S. National Security.

Non-Government users engage Vulcan with their innovations to address U.S. Government needs.

JIFX 24-2 will utilize Vulcan for technology assessments during the event.

Visit [www.Vulcan-sof.com](http://www.Vulcan-sof.com) to request an account and create your Scout Card.



# Experiment Introductions

- Introduction of Experiment (1-2 minutes each)
  - What is your technology/ experiment
  - How can you support other experiments?
  - How can other experiments support you?

<b>Company / Organization</b>	<b>Experiment Name</b>
Aronetics	Thor
AIVOT	Intelligent Humanoid Robot
Avalon Holographics	Holographic Situational Awareness
Algae Research and Supply, Inc	Demonstration of Rho Pond: Scalable, controlled habitat for aquaculture, and nutrient remediation.
Bluespace.AI	Development & Assessment of Off-Road Autonomous-Driving Capabilities
Empirical Systems Aerospace	VESA
Expanse Laboratories	Variable Text Encryption Using Physical Tokens
Gantz Mountain	Multi-Domain Expeditionary Artificial Intelligence and Behavior Analysis at-the-edge for Tactical Surveillance Application
Grayscale AI	Target Detection using Neuromorphic Vision
GreenSight	Mustang sUAS
GreenSight	SA4 - Secure Advanced Aerial Atritable Asset
GreenSight	Samson - High-Speed Low-Cost Swarming Munitions
GreenSight	CASSEE: Compact Aerial Inspection System
GreenSight	WeatherHive Swarming Meteorological Measurement System
Innovative Algorithms	Phalanx Shield Multi-Domain
IOT/AI	C5ISR Technologies for the Tactical Edge
Odys Aviation	Test Flight of VTOL and Transition Demonstrators
Premise Data	VideoAI & Automated Imagery Collection
Revolute Robotics	A UxS That Collects Data Where No Other UxS Can
Rhoman Aerospace	GPS-Denied UAV Navigation
Skyline Software	Versatile Offsite Reconnaissance Terrain Explorer (VORTEX)
TurbineOne	The Frontline Perception System
Vatn Systems	S1 Attritable Modular Autonomous Underwater System



Questions?

[Ashley.book@nps.edu](mailto:Ashley.book@nps.edu)