



**JIFX**

Joint Interagency Field Experimentation

# JIFX 25-2 Coordination Calls

*"Other experimentation events say that they encourage collaboration and failure, but JIFX truly means it. Every experimenter is eager to collaborate with others to demonstrate capabilities that have never been seen before. Similarly, the true bleeding edge can be seen live in the making at JIFX because of a lack of fear of failure. Only when failure is encouraged do experimenters truly push the bounds of what is possible in hopes of all kinds of discovery, both good and bad."*

*-JIFX 24-3 Participant*

# Agenda

<u>1/7/2025</u>	<u>1/14/2025</u>	<u>1/21/2025</u>	<u>1/28/2025</u>
JIFX Overview	Logistics	Reminders	<b>Finalized Schedule of Events</b>
Introductions: <ul style="list-style-type: none"><li>• JIFX Team</li><li>• JIFX Overview</li><li>• Facilities</li></ul>	Safety <ul style="list-style-type: none"><li>• Event Safety</li><li>• Airspace Safety</li><li>• Hazmat</li></ul>	Experiment Introductions	<b>Logistics &amp; Reminders</b>
Logistics <ul style="list-style-type: none"><li>• Travel</li><li>• Registration &amp; Gate Access</li></ul>	Networks & Frequencies	Vulcan Overview	
	Joint Vulnerability Assessment Branch Overview		

# JIFX 25-2

Dates: 3 – 7 February 2025

Location: NPS Field Laboratory at Camp Roberts (near Paso Robles, CA)

Visit the event webpage for more details,

<https://nps.edu/web/fx/upcoming-jifx>

- Event slides are posted on this page
- Recordings available by request (Ashley.book@nps.edu)

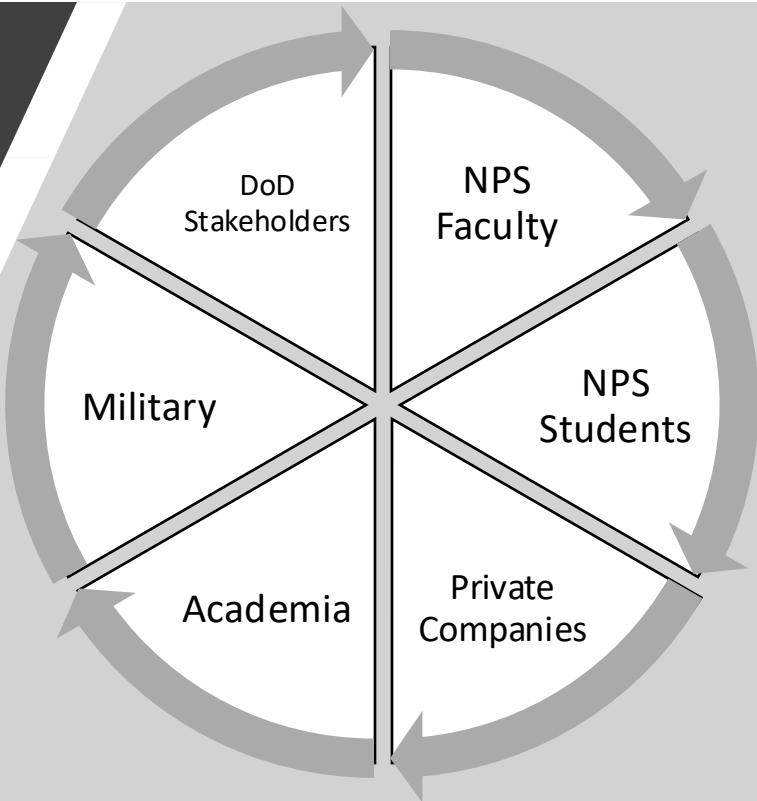


**JIFX**

Joint Interagency Field Experimentation

# What is JIFX?

# WHAT IS JIFX?



The JIFX team leads experimentation in alternative methods to enable rapid technological development by cultivating a community of interest and hosting broadly scoped quarterly collaborative field events which enable DoD, US government, and allied stakeholders to identify, influence, and accelerate early-stage technology development that address national and collective security challenges.

JIFX is an **experiment** in the methods to enable **rapid technological development**.



















JIFX provides researchers a turn-key solution for **safe, secure, legal, and collaborative** experimentation

# What JIFX isn't:

- Tradeshow
- Conference
- Sales Event
- Demonstration
- Lectures
- Presentation
- Acquisition Event



JIFX is not a marketing event or trade show, so send your engineers!



and Illustrate Your Own Stories	Rachel Winterberg	 
ancing through STEAM	Elizabeth Peterson	 
onia - More than Just a Gallery!	Donna Staten	 
<b>11:00AM BRAIN BREAK #1</b>		
.terns in Music, Dance and Mathematics	Marcia Daft	 
Exploring the Creative Process with Dance	Deirdre Moore	 
Experimenting with Color	Beth Elliston	 
<b>Partner Showcase: Art to Remember</b>		
<b>Partner Showcase: Buncee</b>		
<b>12:35PM BRAIN BREAK #2</b>		
Building an Arts Magnet School	Bobby Riley & Judy Kilma	 
Put on Your Math Goggles: Seeing Math in Art	Robin Ward	 
.PM Design Brain-Friendly Learning Spaces	Erin Klein	 
<b>1:50PM BRAIN BREAK #3</b>		

**BIG SALE**

# Experimentation vs. Demonstration



**Experiment:**

- “I need to learn something new about...”
- Several variables, looking for the relationships between them
  - “Does a change to A impact B?”
- Hypothesis: “I think I know what will happen...”
- Intent: **Gain knowledge**

**Demonstration:**

- “Let me show you what I can do”
- “I’ve done this before”
- No variables
- Confident of outcome even before starting
- Intent: **Share knowledge**

Source: Department of the Navy Small Business Innovation Research (SBIR), Guidebook to Experiment Analysis & Reporting

# Tips for Success at JIFX

## Define a Clear Experimentation Plan

- **Set Specific Objectives:** Know what you want to achieve, whether it's data collection, networking, or demonstrating technology.
- **Align with JIFX Objectives:** Frame your goals to contribute to the joint, interagency, and field experimentation environment.

## Prepare Thoroughly

- **Test Equipment:** Ensure your technology is operational and troubleshoot potential issues beforehand.
- **Understand the Environment:** Review site conditions and logistical details provided in pre-event materials.

## Engage with Stakeholders

- **Network Strategically:** Build connections with participants, sponsors, and government representatives.
- **Seek Feedback:** Engage observers and stakeholders to gather insights for improvement.

## Be Flexible

- **Adapt to Challenges:** Prepare for unexpected variables such as weather, technical failures, or schedule changes.
- **Iterate Rapidly:** Use on-the-spot findings to refine your setup or approach.

## Leverage Opportunities

- **Participate in Collaboration:** Engage in multi-experiment interactions to maximize value.
- **Showcase Innovation:** Present your technology's unique value to potential partners and sponsors.

## Follow-Up Post-Event

- **Document Results:** Collect and analyze data to measure success.
- **Maintain Connections:** Reach out to participants to build long-term relationships and partnerships.

# FUNDAMENTAL TENETS

---

AUSTERE BY DESIGN

---

COLLABORATION IS EXPECTED

---

BOUNDED, NOT CONTROLLED

---

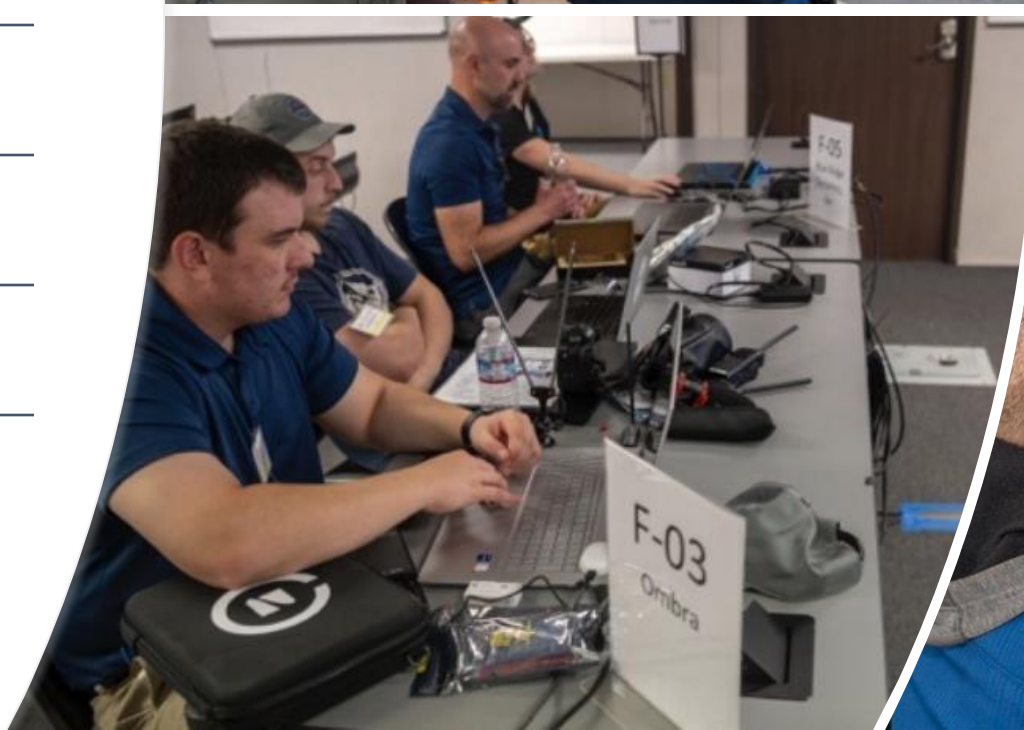
DEVELOP NOW

---

FAILURE = LEARNING

---

INCLUSIVE



**Dr. Mike Richardson**, JIFX Director

**Ashley Book**, Event Operations

**Jonathan Coon**, Data Management

**Aurelio Monarrez**, Air Operations

**Joseph Lukefahr**, Tech & Network Management

**Grady Gatoloai**, Camp Roberts Facilities

**James Martin**, Joint Vulnerability Assessment Branch

**Ruben Villanueva**, Joint Vulnerability Assessment Branch

# JIFX Team

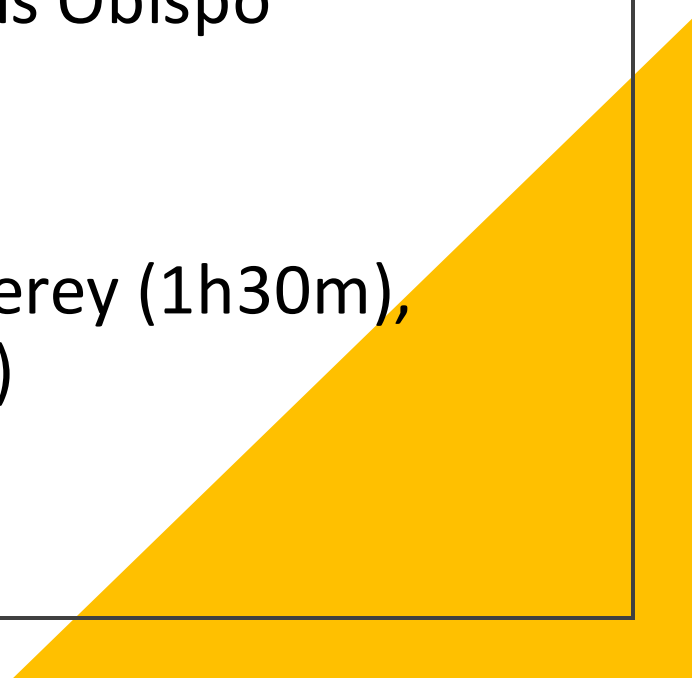


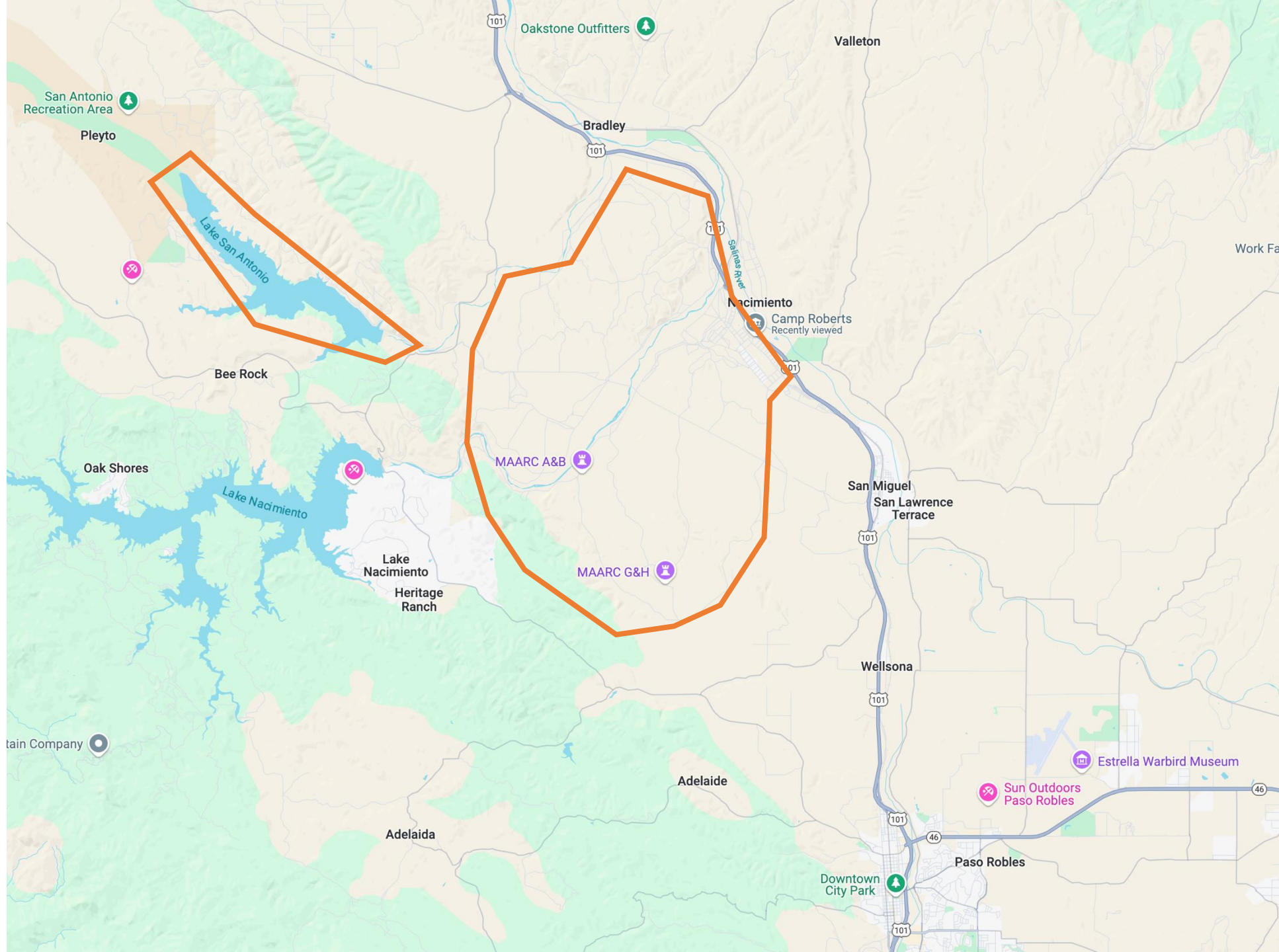
**JIFX**

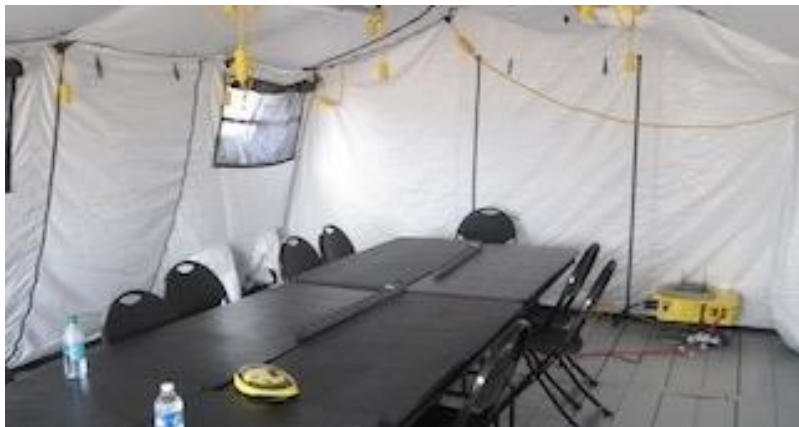
Joint Interagency Field Experimentation

# Event Logistics

# General Location

- McMillan Airfield at Camp Roberts
  - Closest Town: Paso Robles, Atascadero, San Luis Obispo
    - Hotels, Vacation Rentals, etc.
  - Closest Airports: San Luis Obispo (45m), Monterey (1h30m), Bakersfield (2h), San Jose (2h15m), SF (2h40m)
- 
- A large yellow triangle is positioned in the bottom right corner of the slide, pointing towards the top right.





# Camp Roberts Facilities: McMillan Airfield

---





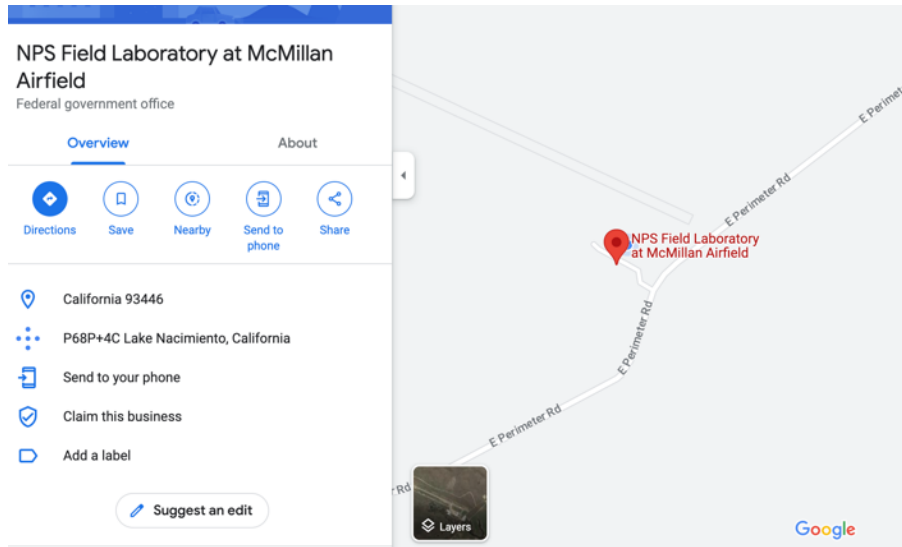




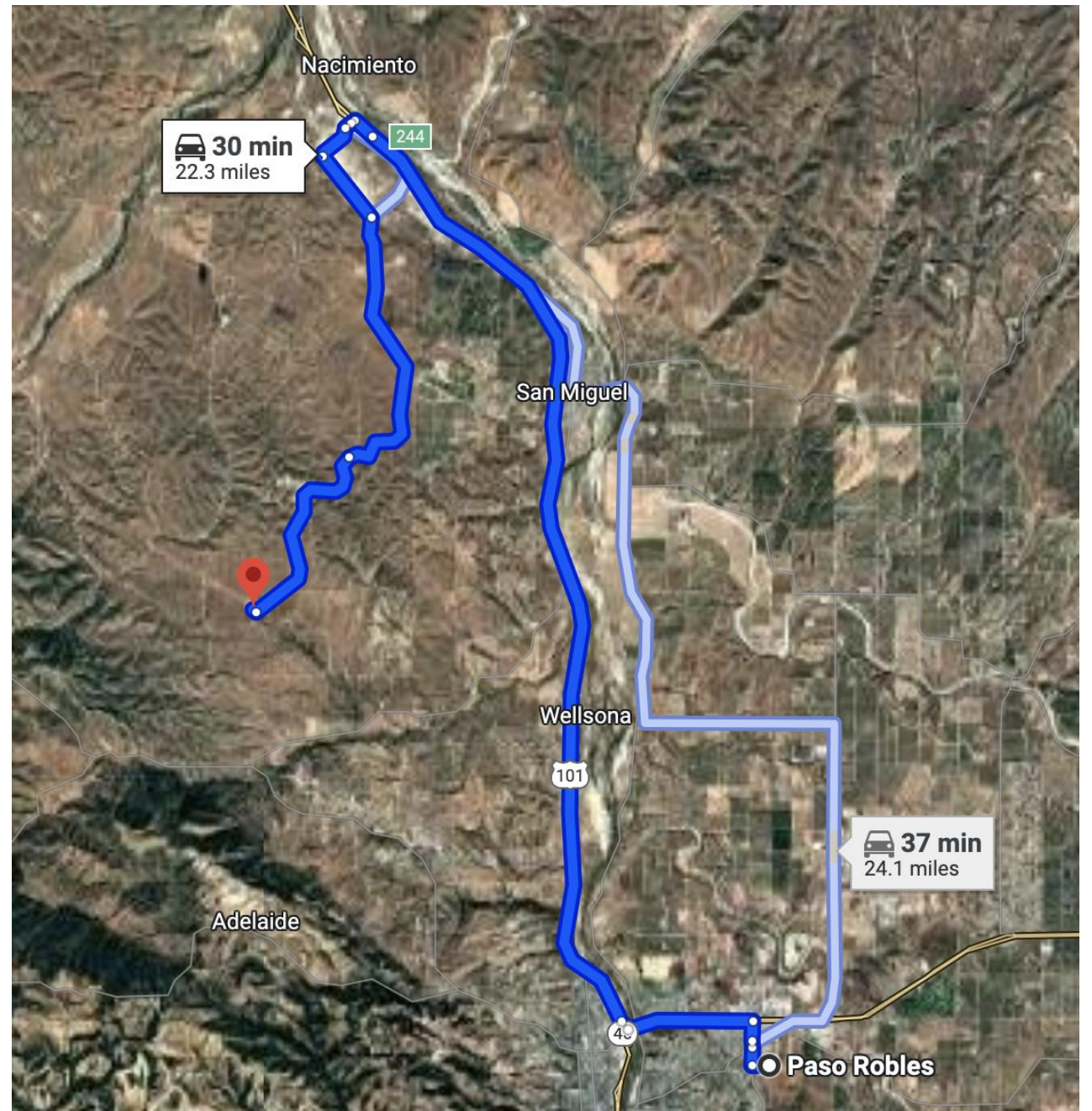
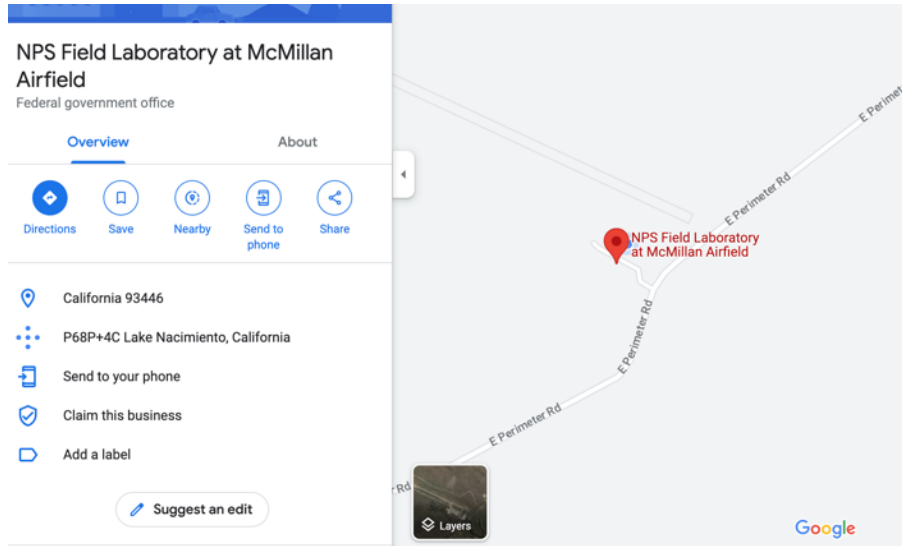
## Camp Roberts Facilities: Combined Arms Collective Training Facility (CACTF)

26-acre full-scale urban operations training facility including a mock church, police station with underground jail, three-story hotel, businesses, residential buildings, underground tunnels, and a rubble pile.

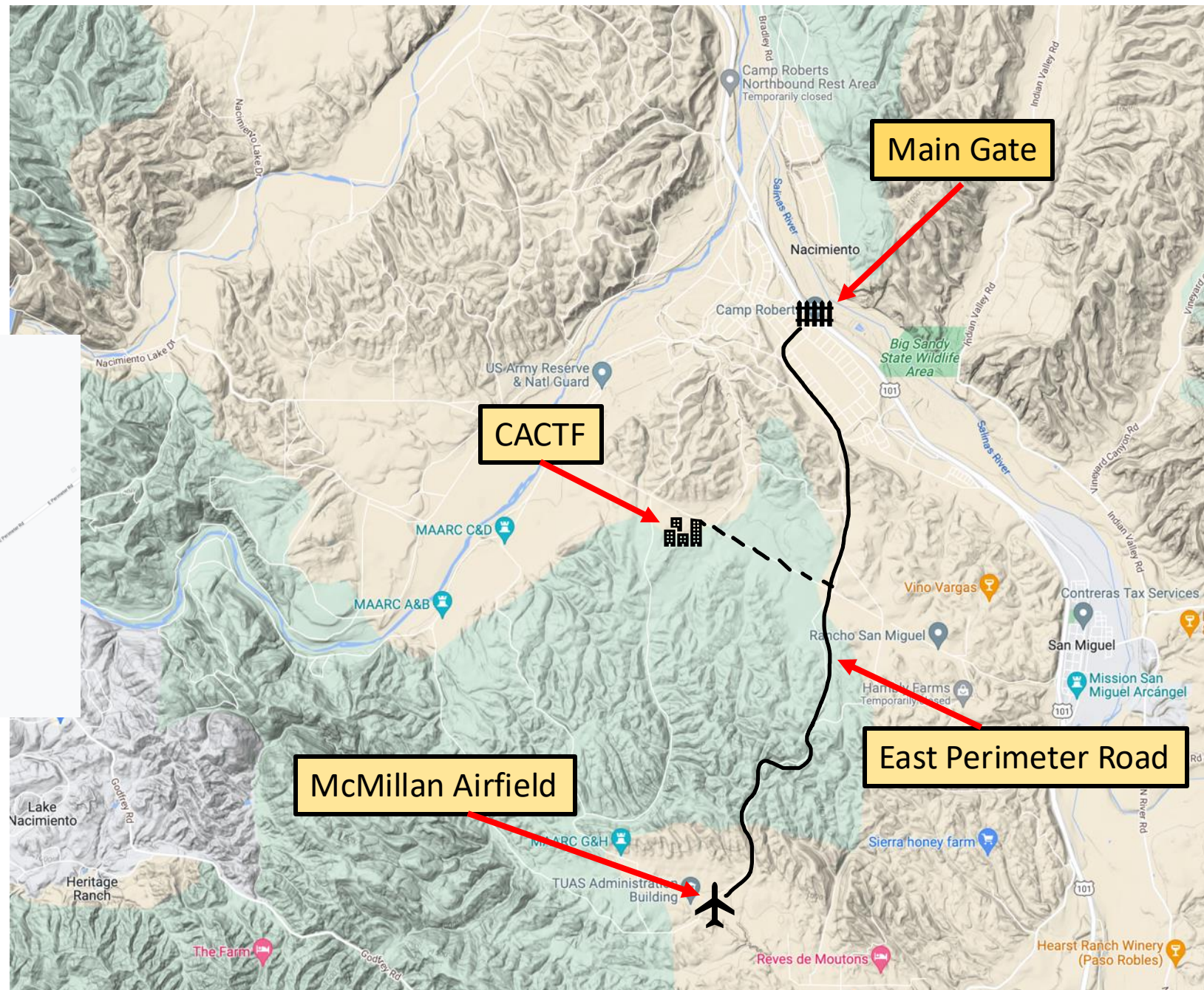
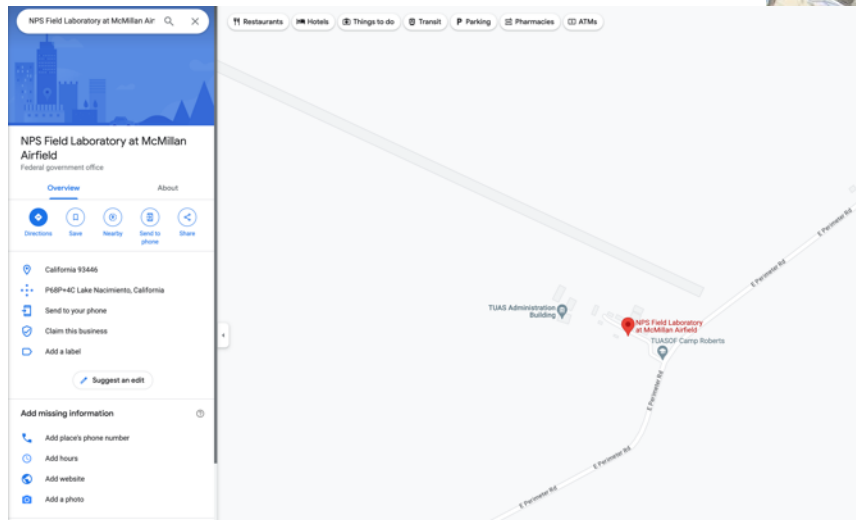
# Event Location



# Event Location



# Camp Roberts Orientation



# McMillan Airfield

Runway



SIP  
Hut

Briefing  
Trailer

Vehicle Barn

Hangar

TOC

Registration

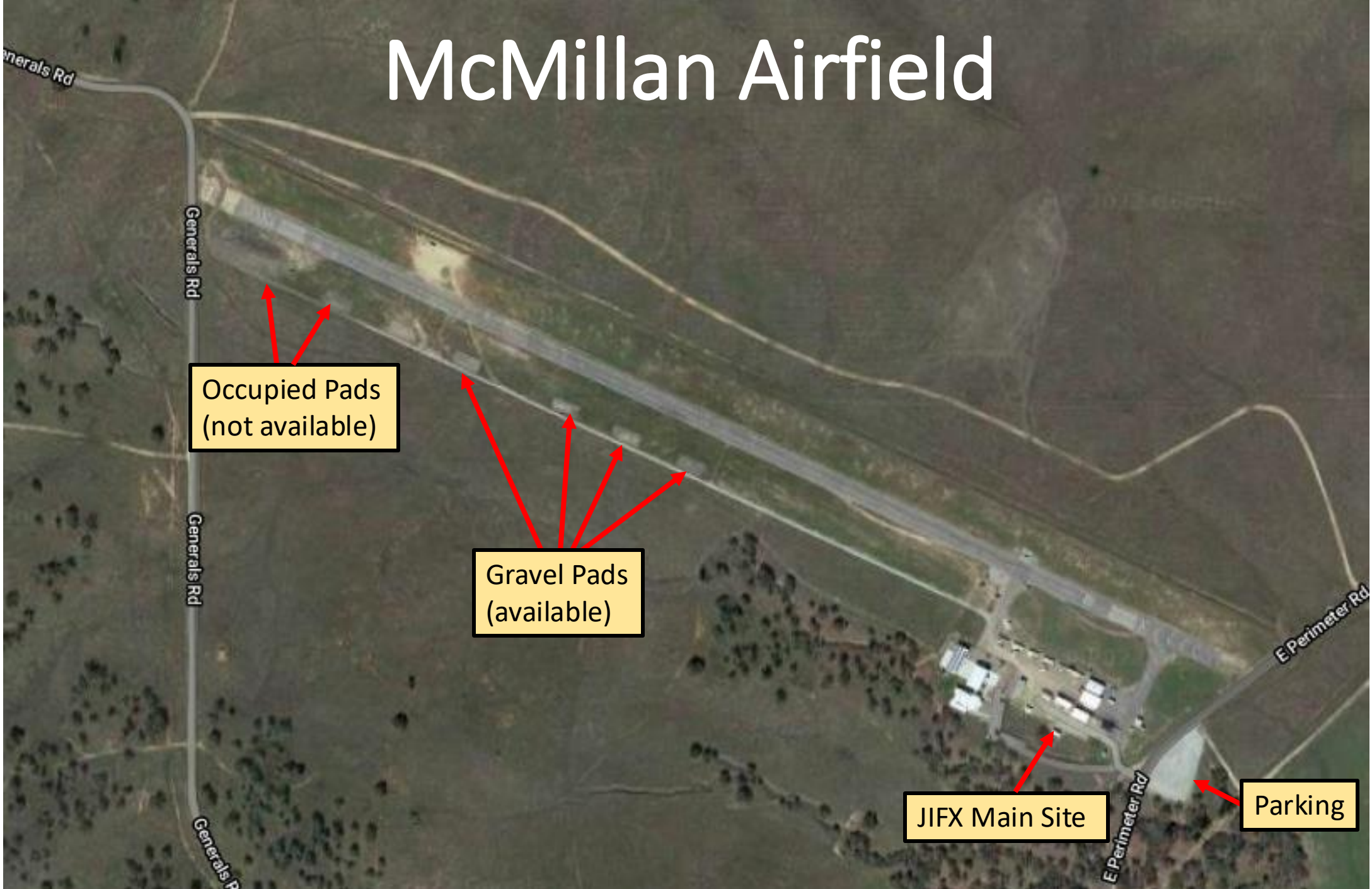
Restrooms

E Perimeter Rd

Parking



# McMillan Airfield



Occupied Pads  
(not available)

Gravel Pads  
(available)

JIFX Main Site

Parking

# Event Schedule

## **Monday:**

**0900:** Venue and registration open.

**1000:** Event kick-off brief.

### **Experimentation, Frequency Verification**

**1630:** Afternoon debrief.

**1730:** Venue Closed

## **Tuesday:**

**0730:** Venue and registration open.

**0800:** Morning brief / Flyers Meeting

### **Experimentation**

**1200:** Lunchtime Brief

**1630:** Afternoon debrief.

**1730:** Venue Closed

## **Wednesday**

**0730:** Venue and registration open.

**0800:** Morning brief / Flyers Meeting

### **Experimentation**

**1200:** Govt-Only Planning Meeting

**1630:** Afternoon debrief.

**2000:** Venue Closed

## **Thursday:**

**0730:** Venue and registration open.

**0800:** Morning brief.

**0830:** Flyers meeting.

### **Experimentation**

**1200:** Afternoon debrief.

**1700:** Venue Closed

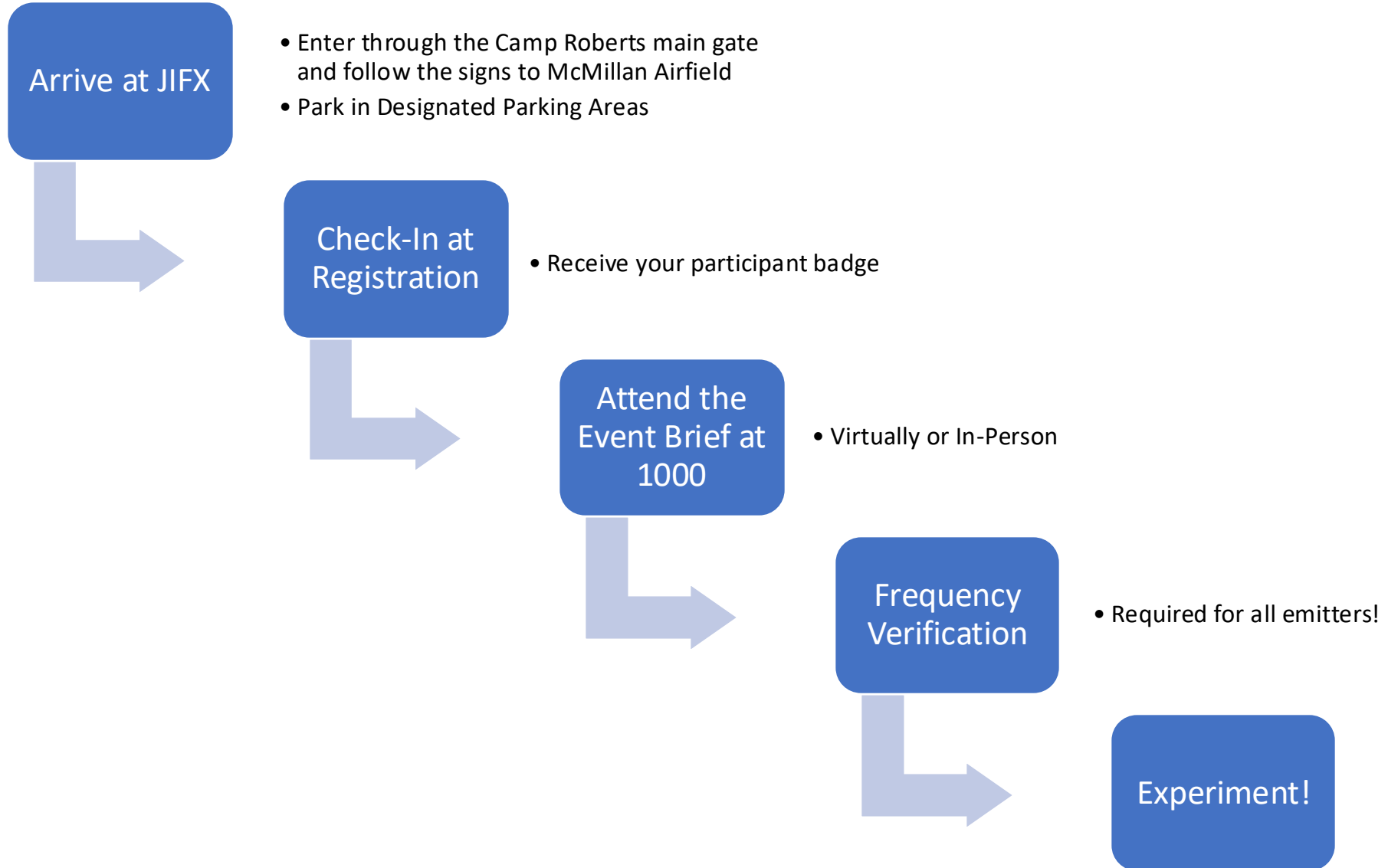
## **Friday**

**0800:** Venue Opens

### **Experimentation**

\*All Briefs will be in-person & broadcast for virtual participation.










# Monday Schedule



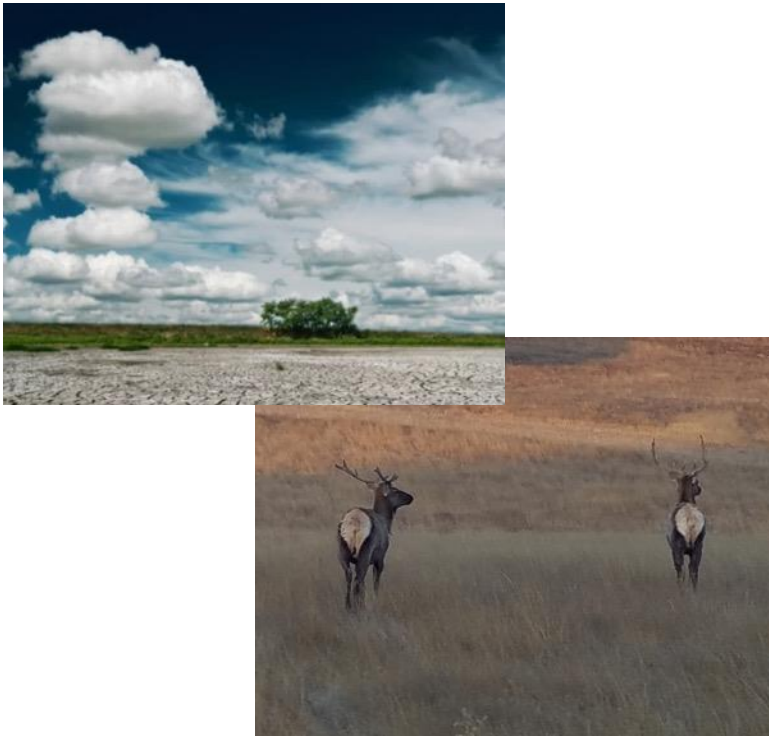
# Registration & Gate Access

- **Registration is required for all participants**
  - [www.nps.edu/web/fx/register](http://www.nps.edu/web/fx/register)
  - Be sure to scroll all the way through the safety brief!
- Non-US Citizens Registration deadline: 15 January 2024

# Badges

 <p>Staff</p> 	 <p>Stakeholder</p> 
 <p>Government</p>	 <p>Private Industry / Academia</p> 
 <p>Foreign National</p> 	

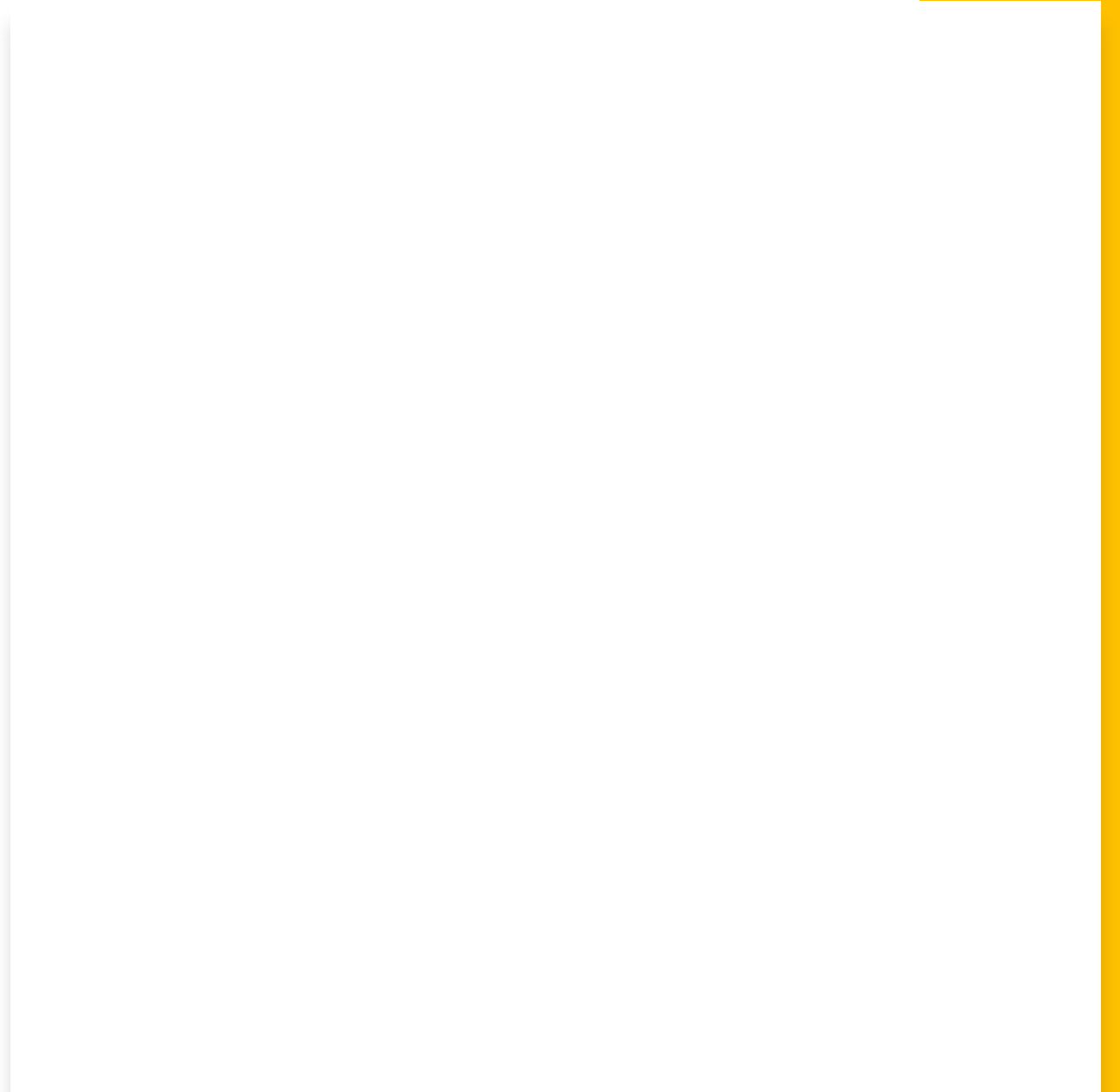
# Event Info



- Weather
  - Fires are a major concern
- Emergencies
  - **Emergency Services are 30-45 minutes away**
  - Emergency Phone Numbers will be on the back of all participant name badge
- Wildlife
- Food options limited: bring what you need
- Hazmat: *pack out what you bring in!*



# Weather



# Event Info

## Photography:

- Okay to photograph/video your own equipment
- Ask for permission before capturing imagery of any other experiments/people
- No photos of personnel in uniform
- No photos of sensitive sites
- NPS Public Affairs Office



# Shipping

## **Parcel Service (Individual packages, less than 150 lbs)**

NPS Field Laboratory - McMillan Airfield

Attn: (\*Your Company / Your Name\*)

Bldg 914, Shipping & Receiving

Camp Roberts, CA 93451-5000

Ph 805-227-1314

## **Directly to the Airfield: Freight**

NPS Field Laboratory - McMillan Airfield

Attn: (\*Your Company / Your Name\*)

McMillan Airfield, East Perimeter Rd

Camp Roberts, CA 93451-5000

Ph 805-227-1314

Addresses are posted on  
the website!

[www.nps.edu/fx](http://www.nps.edu/fx)

# Airspace Safety



Found on “Upcoming Events” Page

- [Airspace Control Plan \(ACP\)](#)
- [Pre-Mishap Plan \(PMP\)](#)

# Airspace Control Plan (ACP)

This **Airspace Control Plan (ACP)** outlines airspace procedures for NPS activities aboard Camp Roberts CA ARNG base and within Restricted Area R-2504A/B. The ACP is directive for all NPS JIFX event participants.

**Airspace Boundaries and Buffers must be displayed on your Ground Control Station (GCS)**

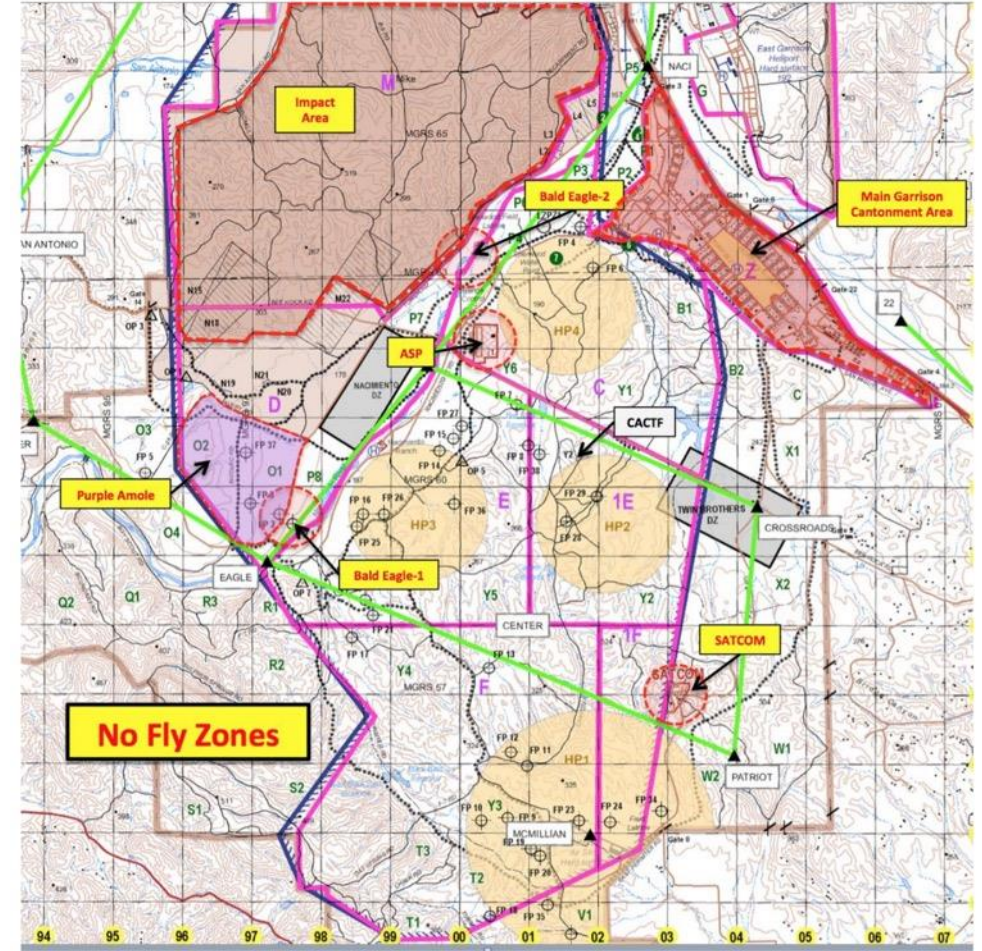


Figure 3: Camp Roberts Restricted Operating Zones (A-F, M, Z), No Fly Zones, and Holding Points within the R-2504

# Pre-Mishap Plan

The PMP established procedures that will assist personnel immediately following a mishap.

*“In case of a mishap, or any unintended impact with the ground or another vehicle, the flying unit will immediately notify the Air Boss via Radio or phone.”*

# Air Operations



No flight operations are permitted unless the RED RANGE FLAG is flying

## Flyers Meeting – Every morning!

- An “Airboss” will manage all UAVS and always maintain safety in the airspace.
- JIFX Radios for communications
- Always remain clear of runway, unless permission granted from airboss

# JIFX Networks



## **Communications**

### **Local IP networking (Ethernet, WiFi)**

- McMillan Airfield
- CACTF

**Limited Internet  
connectivity**




## **Information Technology (Camp Roberts)**

### **Printing @ McMillan Airfield**

### **Tactical Assault Kit (TAK)**

**Cursor-on-Target  
debugging/routing**

# Before You Connect...

- JIFX network is intended for:
    - Event administration
    - Rapid collaboration & integration
  - Acceptable use:
    - Respect others' operations, privacy, security
    - No malicious activity
  - Consult your organization's IT & security policies before connecting
  - Coordinate with network manager before connecting systems (Joseph Lukefahr)
- 
- A large yellow triangle is positioned in the bottom right corner of the slide, pointing towards the top right.

# Joint Vulnerability Assessment Branch

---

- Frequency Verifications
- Cyber Vulnerability Assessments



# Collaborations



---

**Request**

NUE provides ruggedized portable power. We are here to serve you all, we literally bring them and power other vendors.

**Contact Information**

[paul.shmotolokha@newuseenergy.com](mailto:paul.shmotolokha@newuseenergy.com)

[Empty gray bar]

[Empty gray bar]

---

# Experiment Introductions

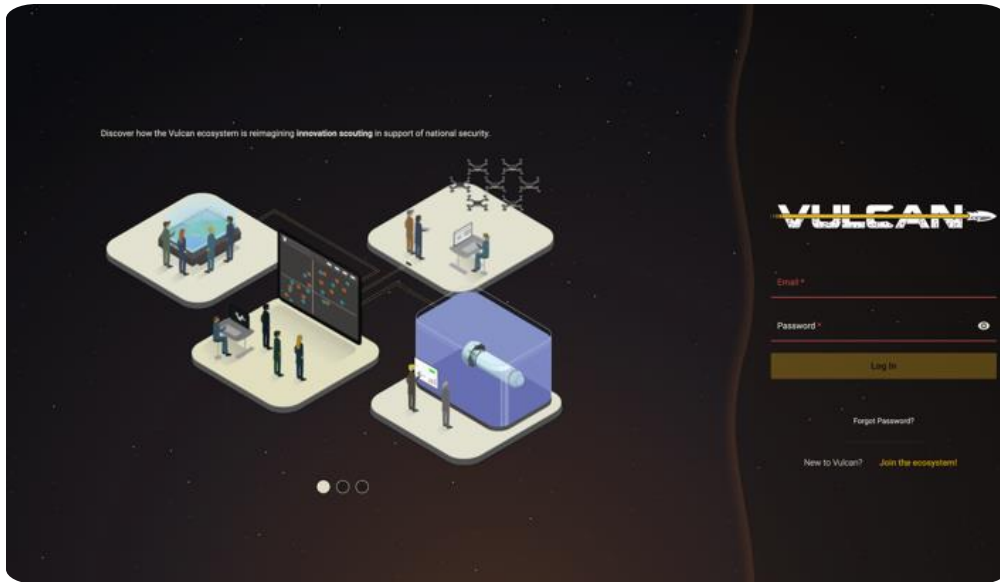
- Introduction of Experiment
  - 1-2 minutes each
1. What is your technology
  2. What is your experiment
  3. How can you support other experiments
  4. How can other experiments support you

# Experiment Confirmations

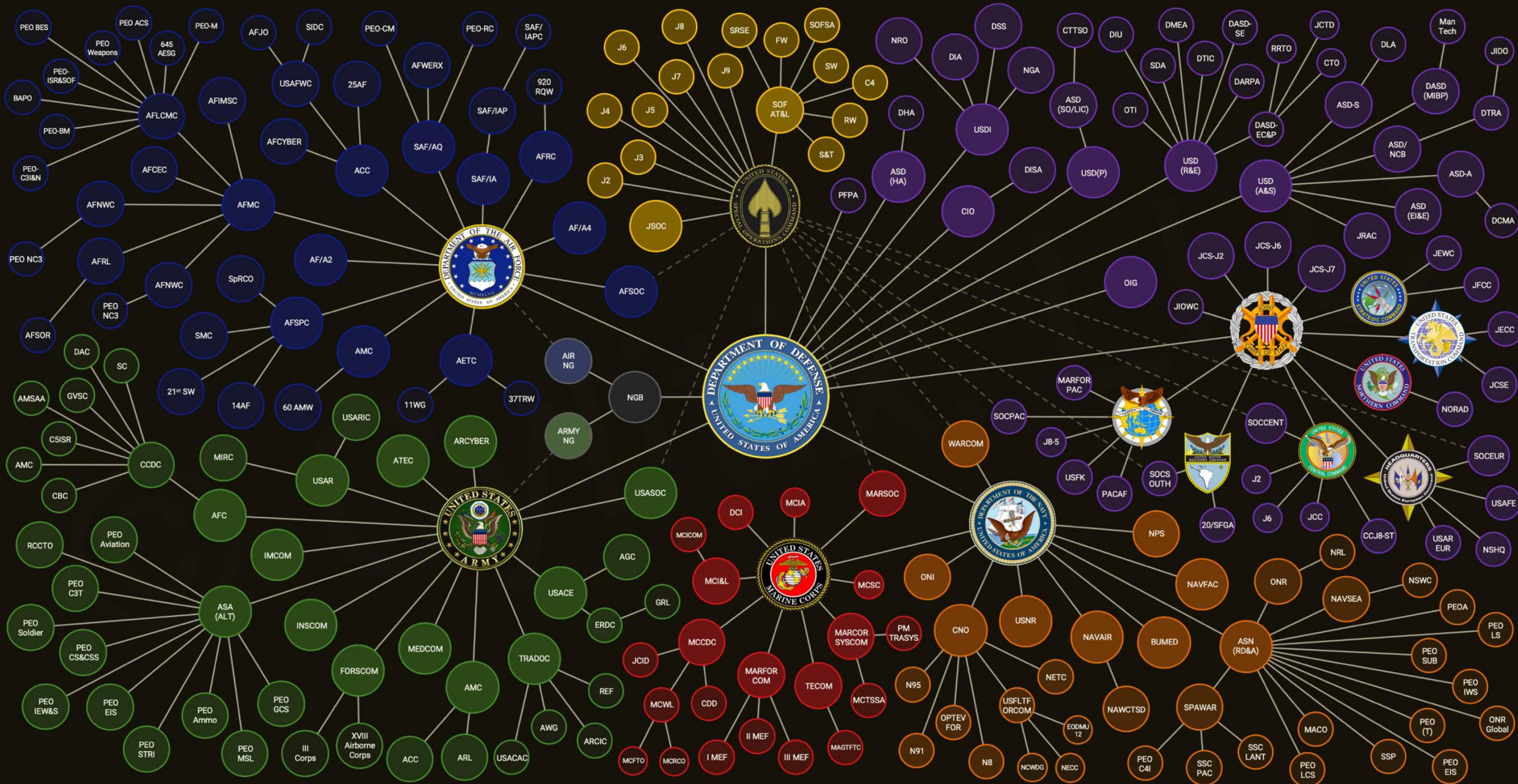
**Confirmed Experiments**

**Pending Confirmation**

# Vulcan



- Vulcan is an innovation scouting platform that serves a diverse ecosystem and provides networked capabilities for the discovery and assessment of capabilities of interest to U.S. National Security.
- Non-Government users engage Vulcan with their innovations to address U.S. Government needs.
- Visit [www.Vulcan-sof.com](http://www.Vulcan-sof.com) to request an account and create your Scout Card.





**JIFX**

Joint Interagency Field Experimentation

# Questions?

*Slides available on Website – “Upcoming JIFX”*

*Recording available by request ([Ashley.book@nps.edu](mailto:Ashley.book@nps.edu))*