

**Andarab District**  
 Baghlan Province  
 AFGHANISTAN



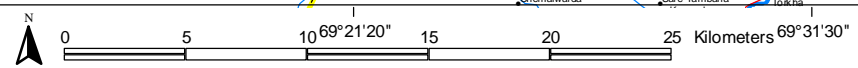
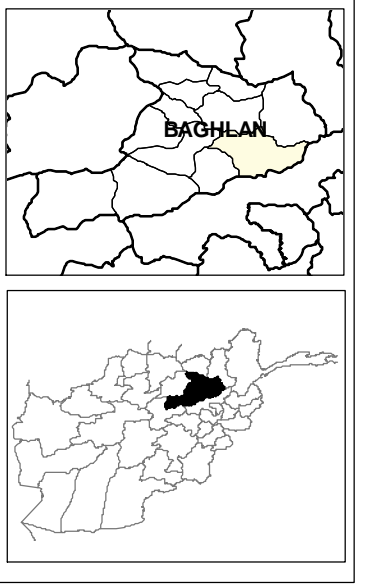
**LEGEND**

- SETTLEMENTS**
- Capital
  - Province Center
  - District Center
  - Villages
- BOUNDARIES**
- International
  - Provincial
  - District
- ROADS**
- primary
  - secondary
  - Track
- Drainage**
- River
  - Stream
  - Lake

**NOTE**  
 The boundaries & names on the map do not imply Official Endorsement Or Acceptance by the United Nation.  
 For Standardization purpose AIMS uses the 32 Province 329 District boundary model.  
 For further information contact AIMS  
 E-mail: info@aims.org.af  
 Web site: www.aims.org.af

Coordinates: Geographic Decimal Degree  
 Datum: WGS 84  
 Date: January 2004

**LOCATION DIAGRAM**







**LEGEND**

**BOUNDARIES**

- International
- Province
- District

**ROADS**

- All weather primary
- All weather secondary
- Track

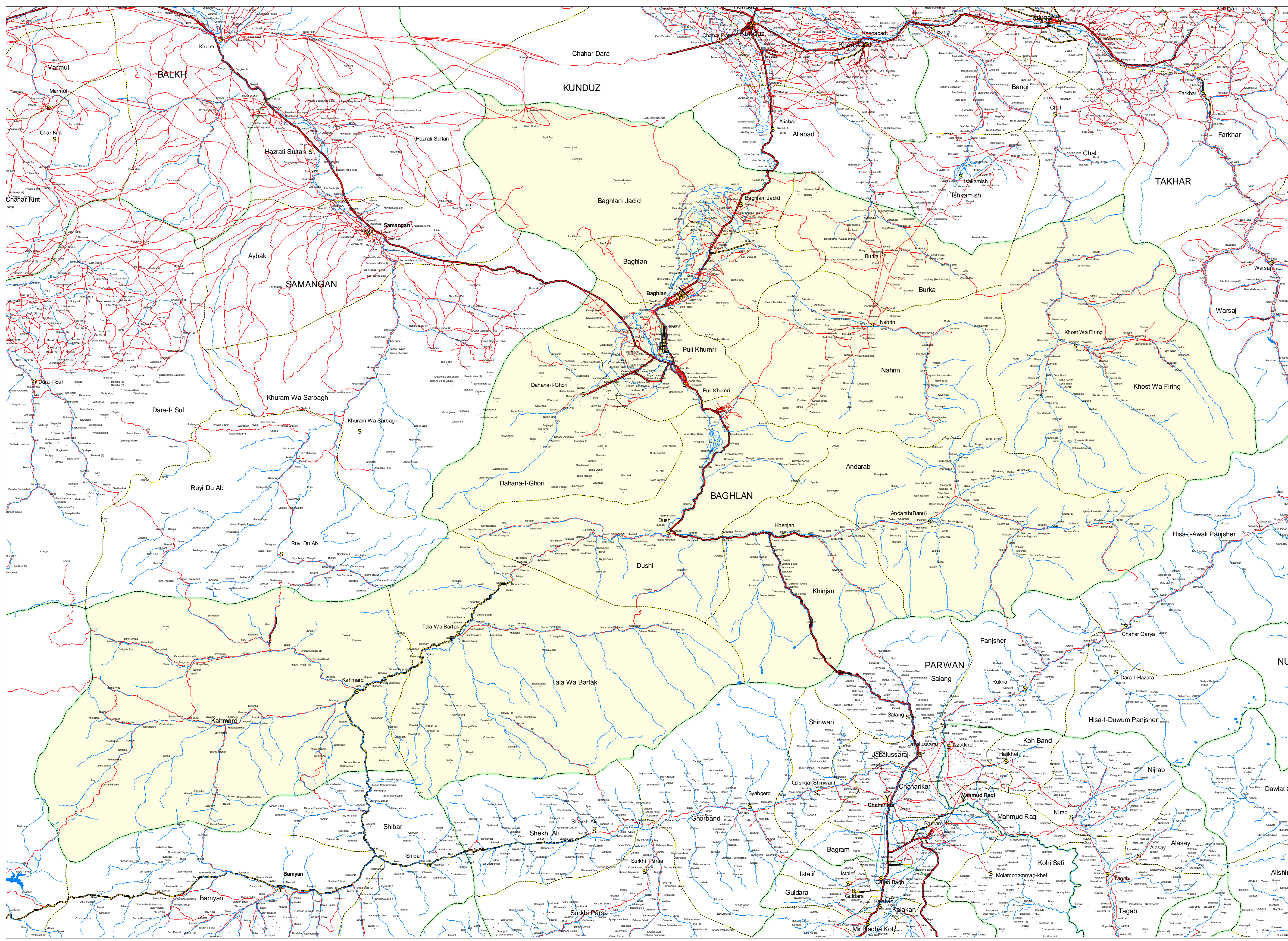
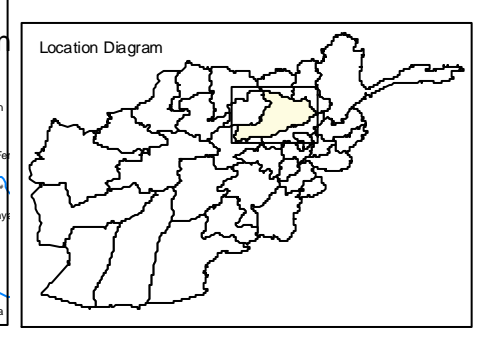
**RIVERS**

- Main
- Stream
- Lake

**SETTLEMENTS**

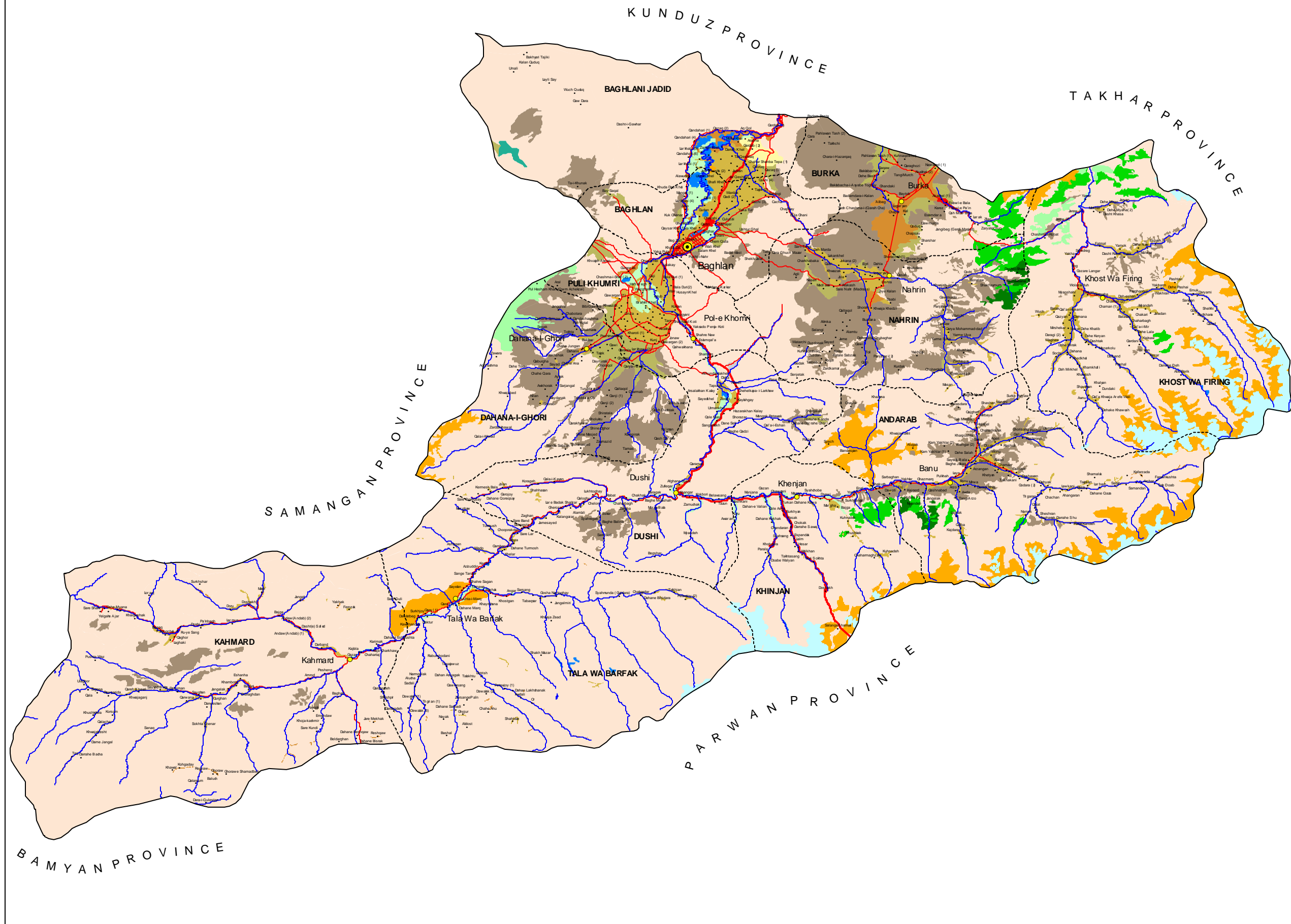
- Capital
- Province Center
- District Center
- Village

**Note:**  
The boundaries and names on the maps do not imply official endorsement or acceptance by the United Nations.  
For further information contact AIMS.  
Email: info@aims.org.af  
http://www.aims.org.af  
Print date: October 2003





AFGHANISTAN  
BAGHLAN PROVINCE  
LAND COVER MAP



**LEGEND**

**BOUNDARIES**

- International
- Province
- District

**CENTERS**

- Province
- District
- Village

**ROADS**

- Primary
- Secondary

**RIVERS**

- Main
- Seasonal

**LAND COVER CLASSIFICATION 1993**

- Settlements
- Fruit Trees
- Vineyards
- Gardens
- Irrigated: Intensively Cultivated (2 Crops/year)
- Irrigated: Intensively Cultivated (1 Crop/Year)
- Irrigated: Intermittently Cultivated
- Rainfed Crops (flat lying areas)
- Rainfed Crops (sloping areas)
- Pistachio Forest
- Natural Forest (closed cover)
- Natural Forest (open cover)
- Degenerate Forests/High Shrubs
- Rangeland (grassland/forbs/low shrubs)
- Rock Outcrop / Bare Soil
- Sand Covered Areas
- Sand Dunes
- Marshland Permanently inundated
- Marshland Seasonal
- Water Bodies
- Permanent Snow

**SOURCES:**

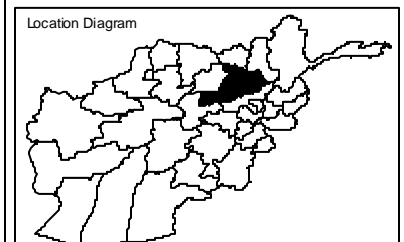
1- This Land Cover Map is based on interpretation of Landsat Thematic Mapper (TM) satellite imagery of Afghanistan, acquired in 1990 (full coverage) and 1993 (partial coverage). The interpretation was assisted through the use of KFA -1000 space photographs of various regions of Afghanistan, acquired from 1988 through to 1992.

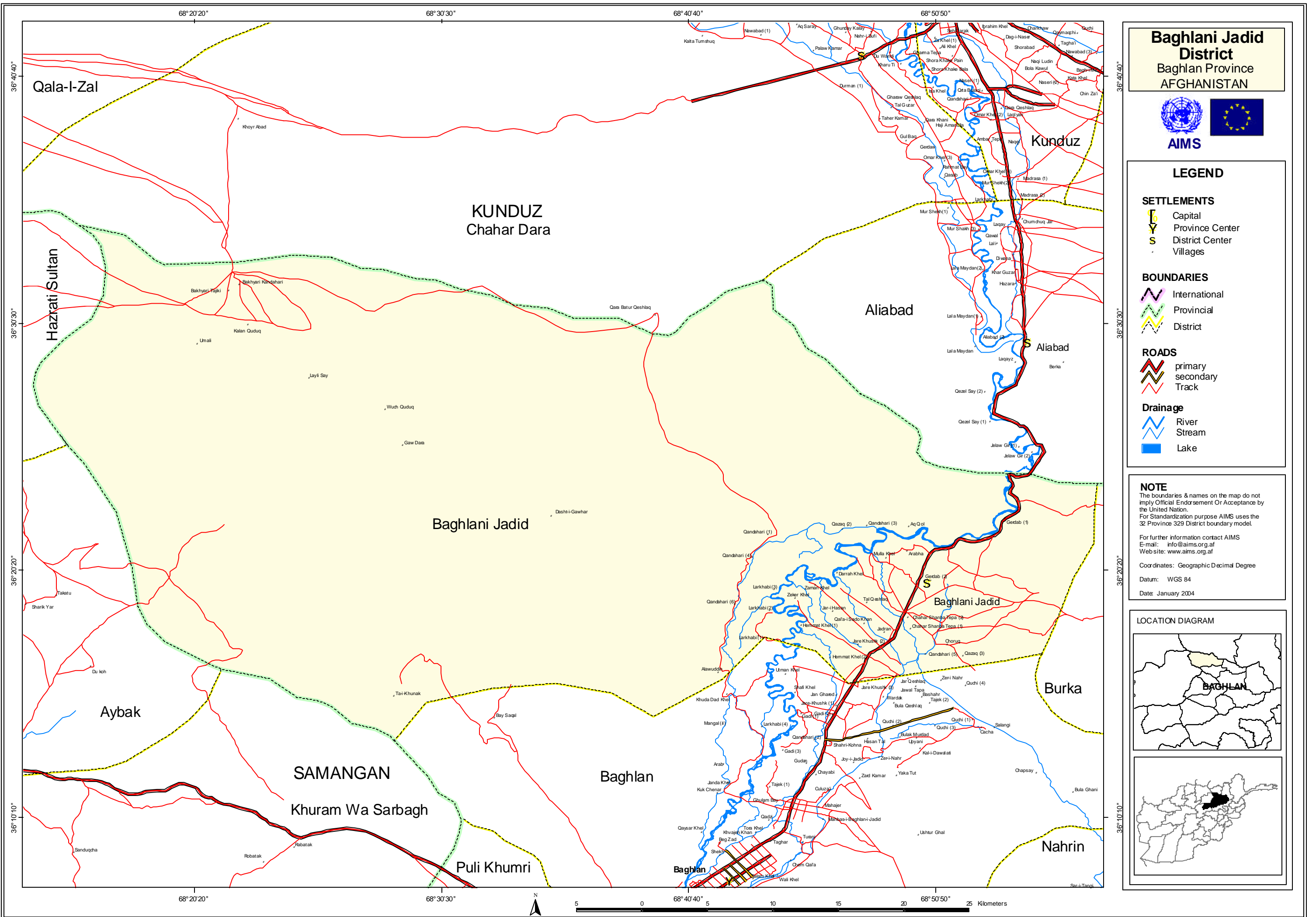
2- Topographic base used for this map is derived from National 1:100,000 scale topographic maps compiled by stereo photogrammetric method using aerial photographs acquired in the late 1950s. The projection of these topographic base maps is UTM, and the coverage of each map is 30 minutes of longitude by 20 minutes of latitude.

**NOTE:**

The boundaries and names on the maps do not imply official endorsement or acceptance by the United Nations.

For further information contact AIMS  
e-mail: info@hic.org.pk





**Baghlani Jadid District**  
 Baghlan Province  
 AFGHANISTAN



**LEGEND**

**SETTLEMENTS**

- Capital
- Province Center
- District Center
- Villages

**BOUNDARIES**

- International
- Provincial
- District

**ROADS**

- primary
- secondary
- Track

**Drainage**

- River
- Stream
- Lake

**NOTE**

The boundaries & names on the map do not imply Official Endorsement Or Acceptance by the United Nation.  
 For Standardization purpose AIMS uses the 32 Province 329 District boundary model.

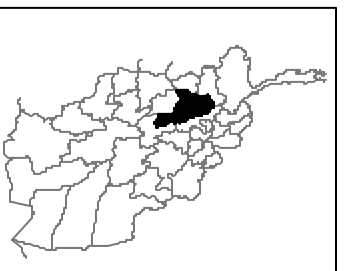
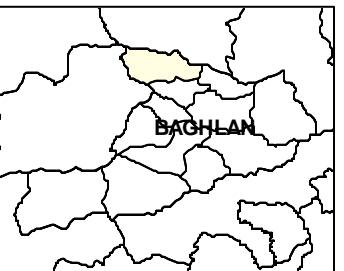
For further information contact AIMS  
 E-mail: [info@aims.org.af](mailto:info@aims.org.af)  
 Website: [www.aims.org.af](http://www.aims.org.af)

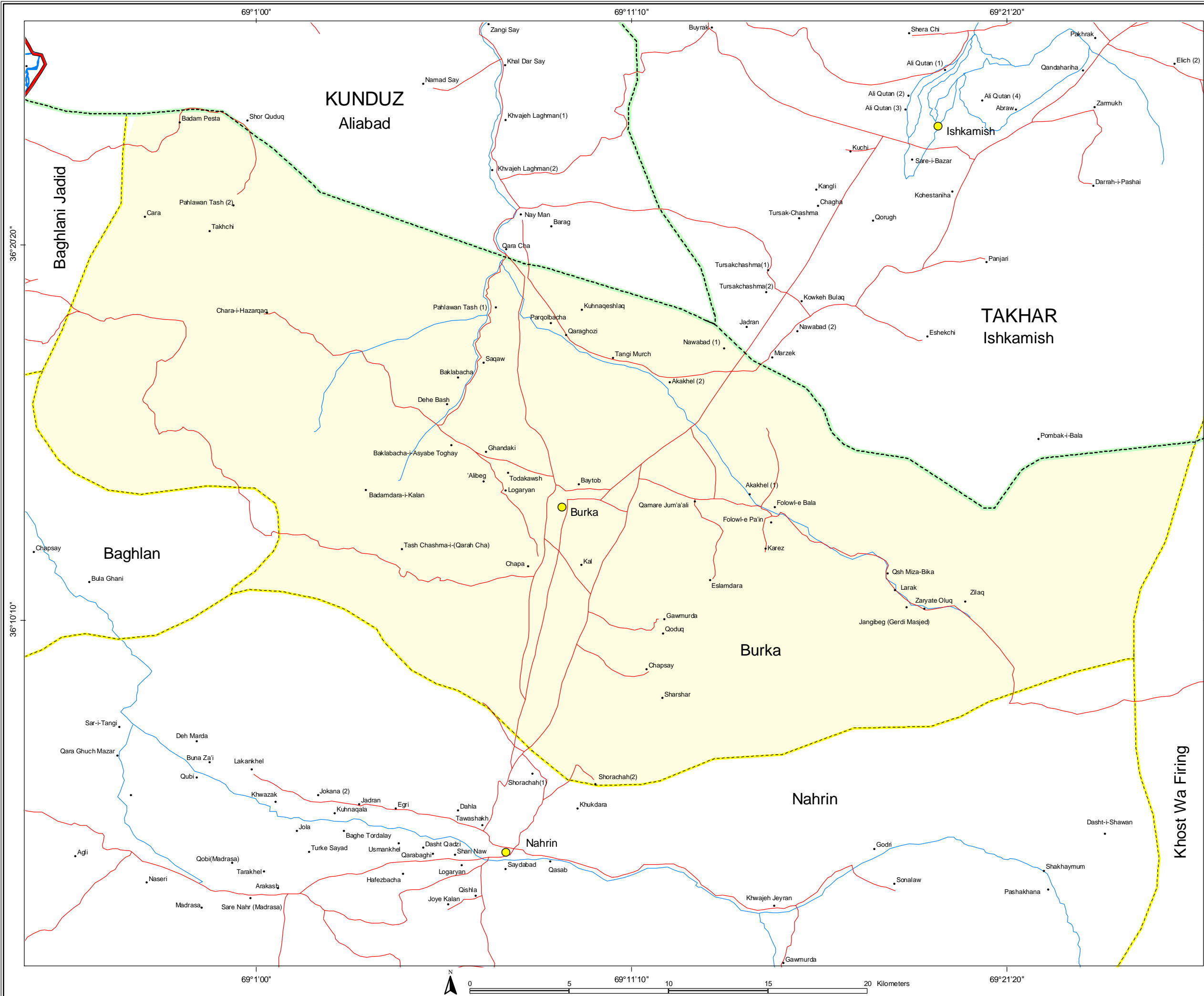
Coordinates: Geographic Decimal Degree

Datum: WGS 84

Date: January 2004

**LOCATION DIAGRAM**





**Burka District**  
 Baghlan Province  
 AFGHANISTAN



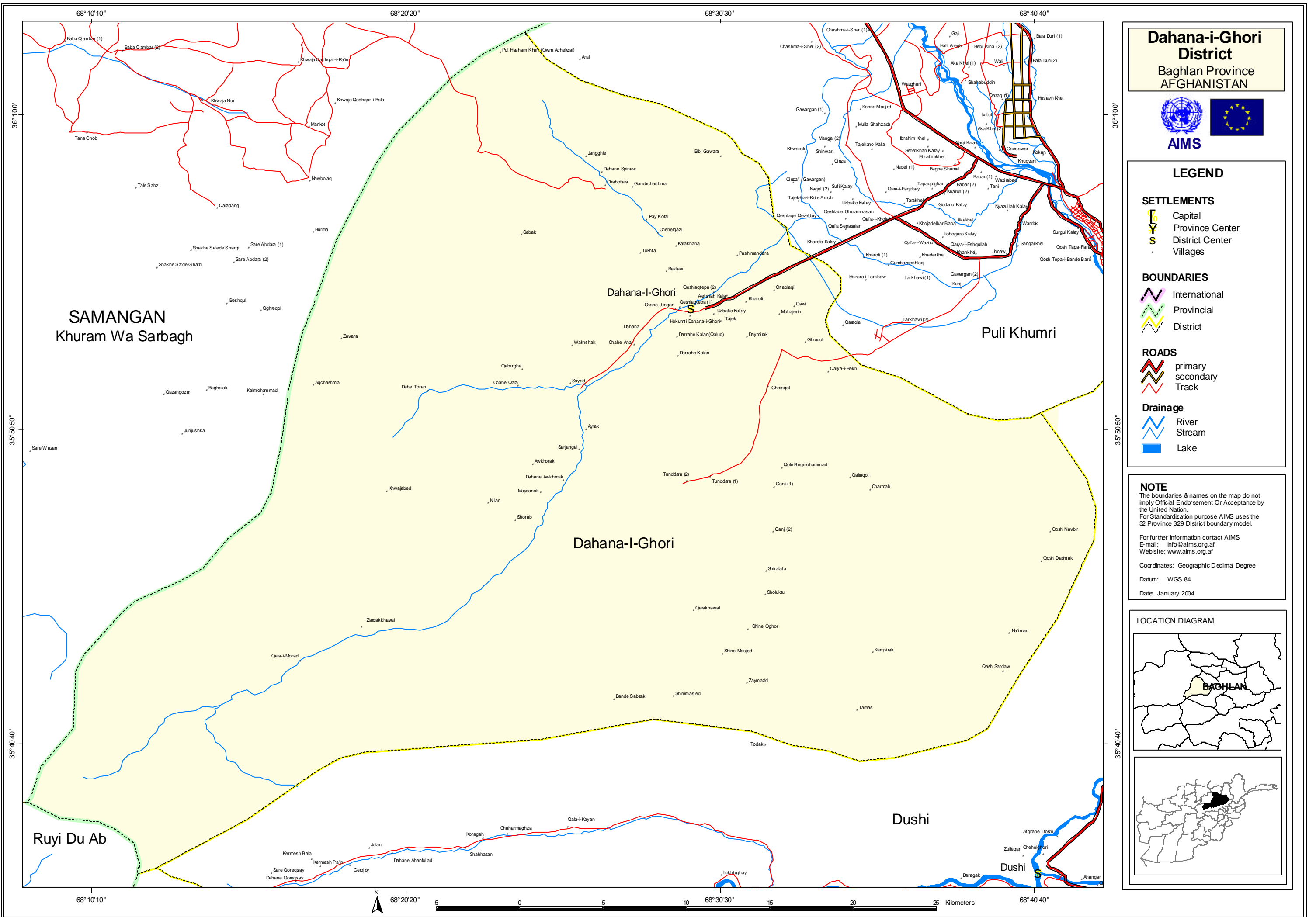
**LEGEND**

- SETTLEMENTS**
- Capital
  - Province Center
  - District Center
  - Villages
- BOUNDARIES**
- International
  - Provincial
  - District
- ROADS**
- primary
  - secondary
  - Track
- Drainage**
- River
  - Stream
  - Lake

**NOTE**  
 The boundaries & names on the map do not imply Official Endorsement Or Acceptance by the United Nation.  
 For Standardization purpose AIMS uses the 32 Province 329 District boundary model.  
 For further information contact AIMS  
 E-mail: [info@aims.org.af](mailto:info@aims.org.af)  
 Web site: [www.aims.org.af](http://www.aims.org.af)  
 Coordinates: Geographic Decimal Degree  
 Datum: WGS 84  
 Date: January 2004

**LOCATION DIAGRAM**





**Dahana-i-Ghori District**  
 Baghlan Province  
 AFGHANISTAN

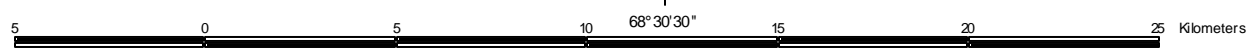
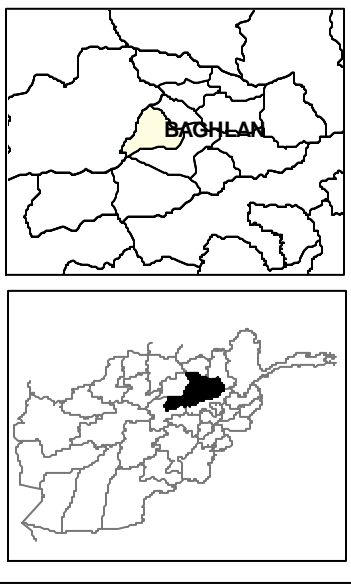


**LEGEND**

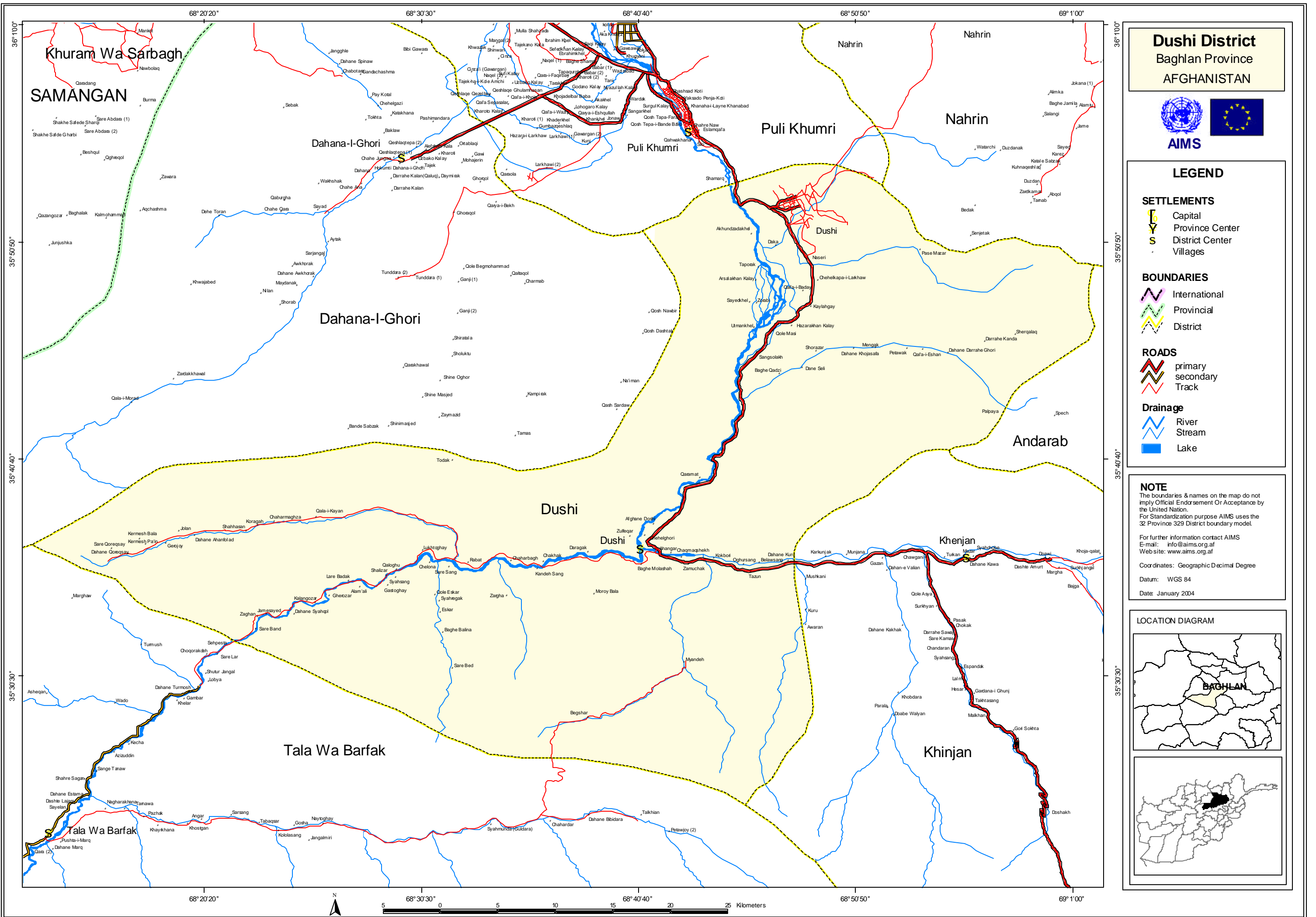
- SETTLEMENTS**
- Capital
  - Province Center
  - District Center
  - Villages
- BOUNDARIES**
- International
  - Provincial
  - District
- ROADS**
- primary
  - secondary
  - Track
- Drainage**
- River
  - Stream
  - Lake

**NOTE**  
 The boundaries & names on the map do not imply Official Endorsement Or Acceptance by the United Nation.  
 For Standardization purpose AIMS uses the 32 Province 329 District boundary model.  
 For further information contact AIMS  
 E-mail: [info@aims.org.af](mailto:info@aims.org.af)  
 Website: [www.aims.org.af](http://www.aims.org.af)  
 Coordinates: Geographic Decimal Degree  
 Datum: WGS 84  
 Date: January 2004

**LOCATION DIAGRAM**

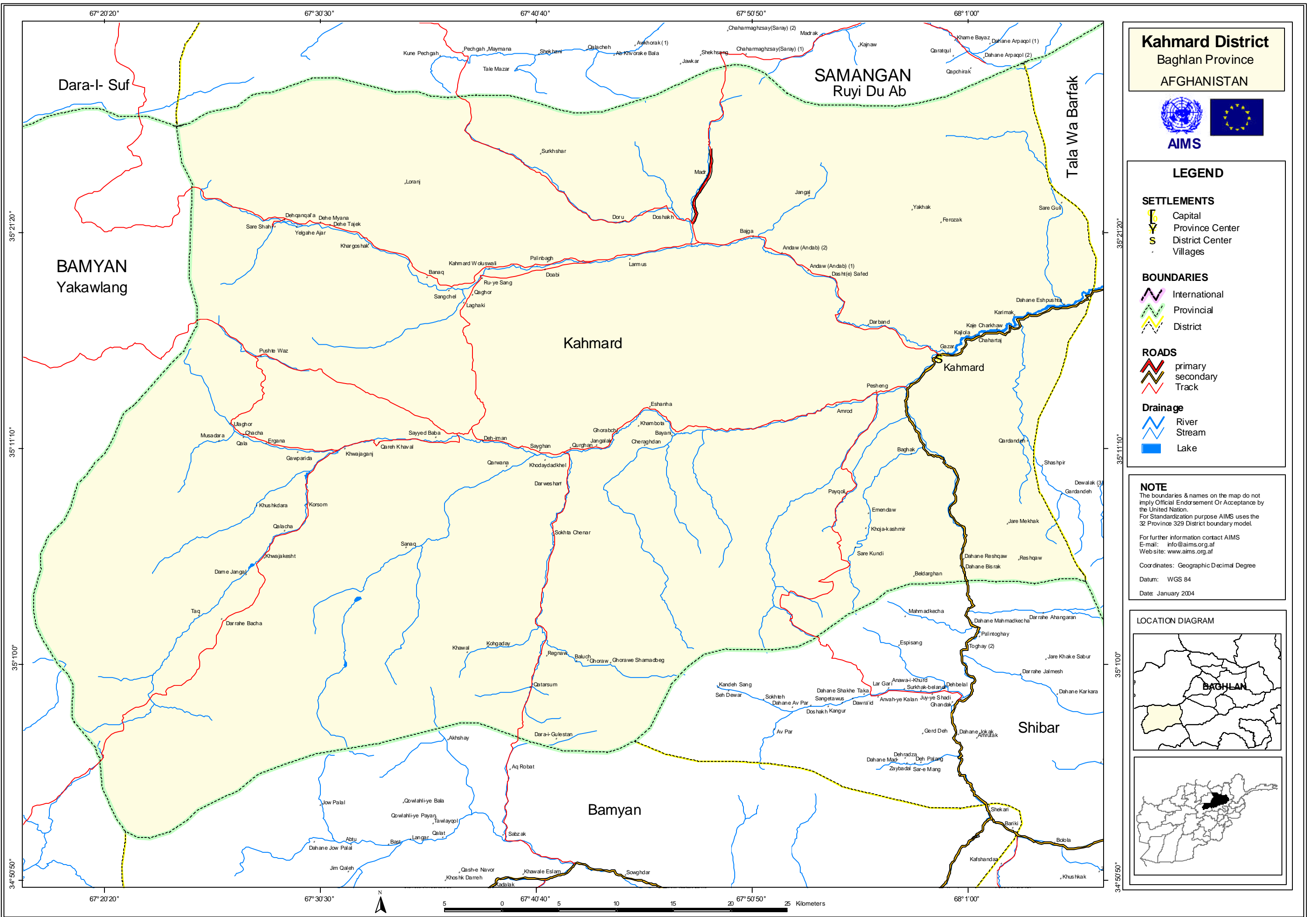


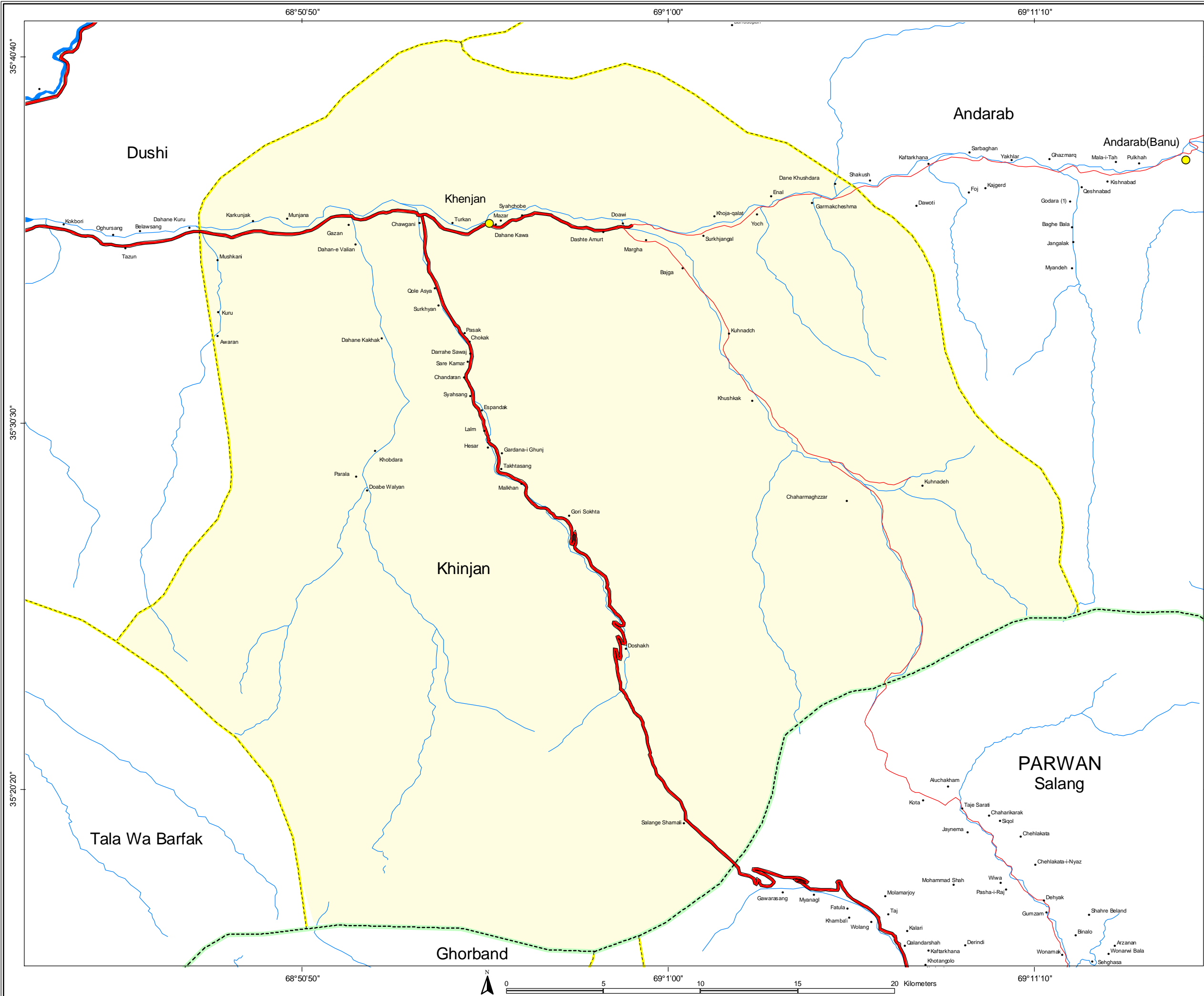












# Khinjan District

Baghlan Province  
AFGHANISTAN



## LEGEND

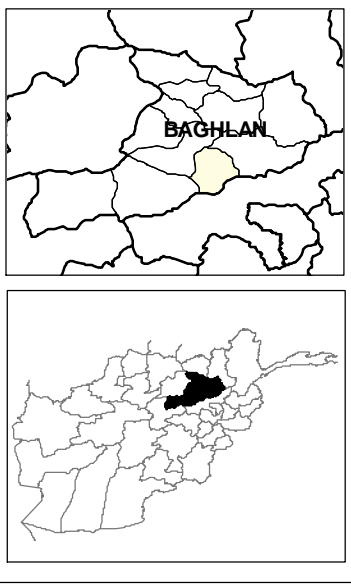
- SETTLEMENTS**
- Capital
  - Province Center
  - District Center
  - Villages
- BOUNDARIES**
- International
  - Provincial
  - District
- ROADS**
- primary
  - secondary
  - Track
- Drainage**
- River
  - Stream
  - Lake

**NOTE**  
The boundaries & names on the map do not imply Official Endorsement Or Acceptance by the United Nation.  
For Standardization purpose AIMS uses the 32 Province 329 District boundary model.

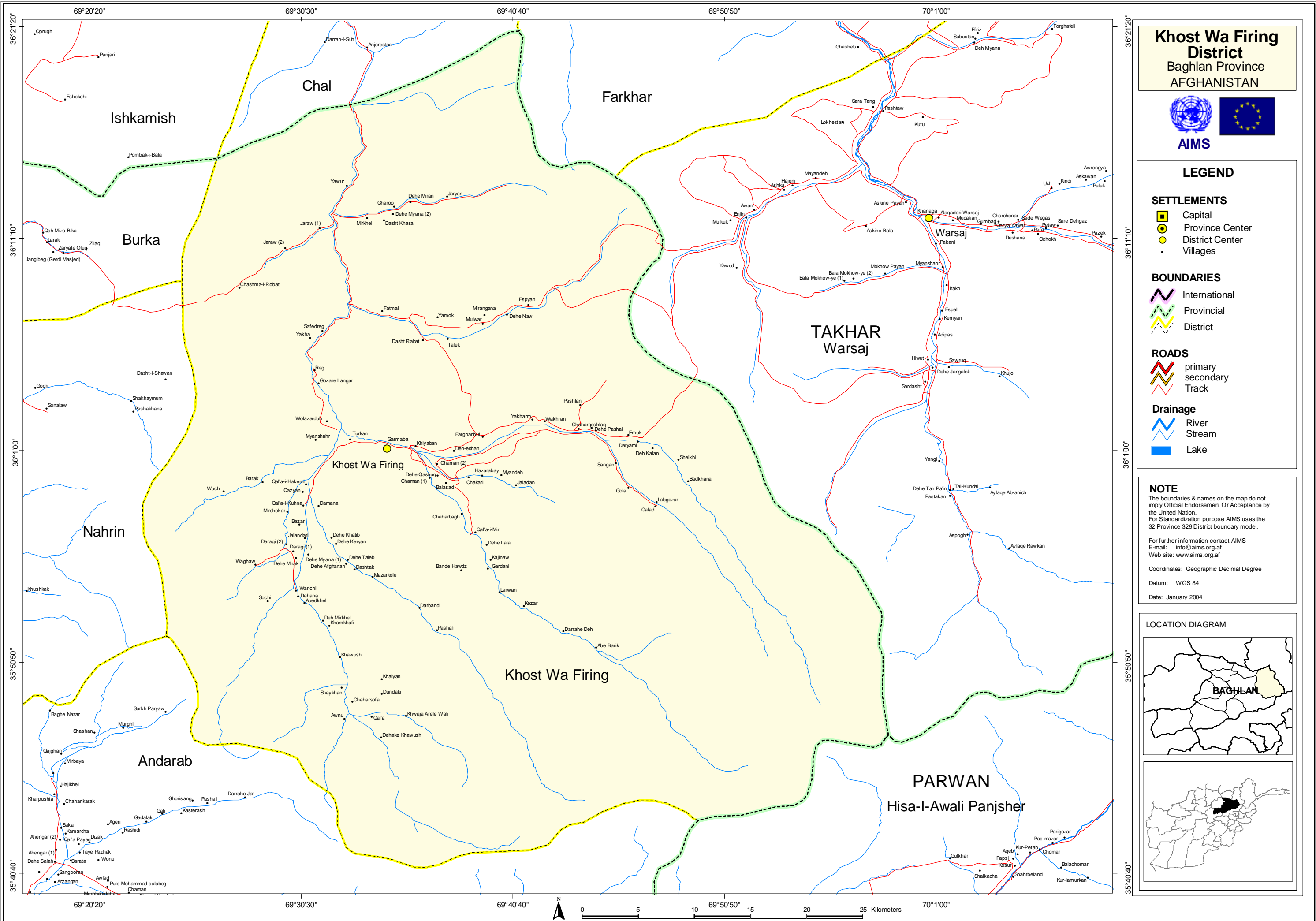
For further information contact AIMS  
E-mail: [info@aims.org.af](mailto:info@aims.org.af)  
Web site: [www.aims.org.af](http://www.aims.org.af)

Coordinates: Geographic Decimal Degree  
Datum: WGS 84  
Date: January 2004

## LOCATION DIAGRAM







**Khost Wa Firing District**  
 Baghlan Province  
 AFGHANISTAN

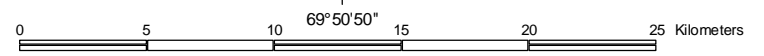
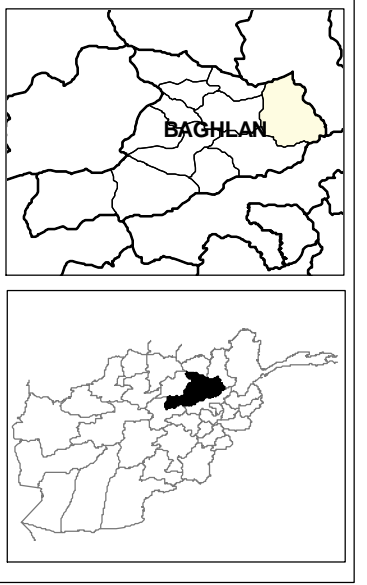


**LEGEND**

- SETTLEMENTS**
- Capital
  - Province Center
  - District Center
  - Villages
- BOUNDARIES**
- International
  - Provincial
  - District
- ROADS**
- primary
  - secondary
  - Track
- Drainage**
- River
  - Stream
  - Lake

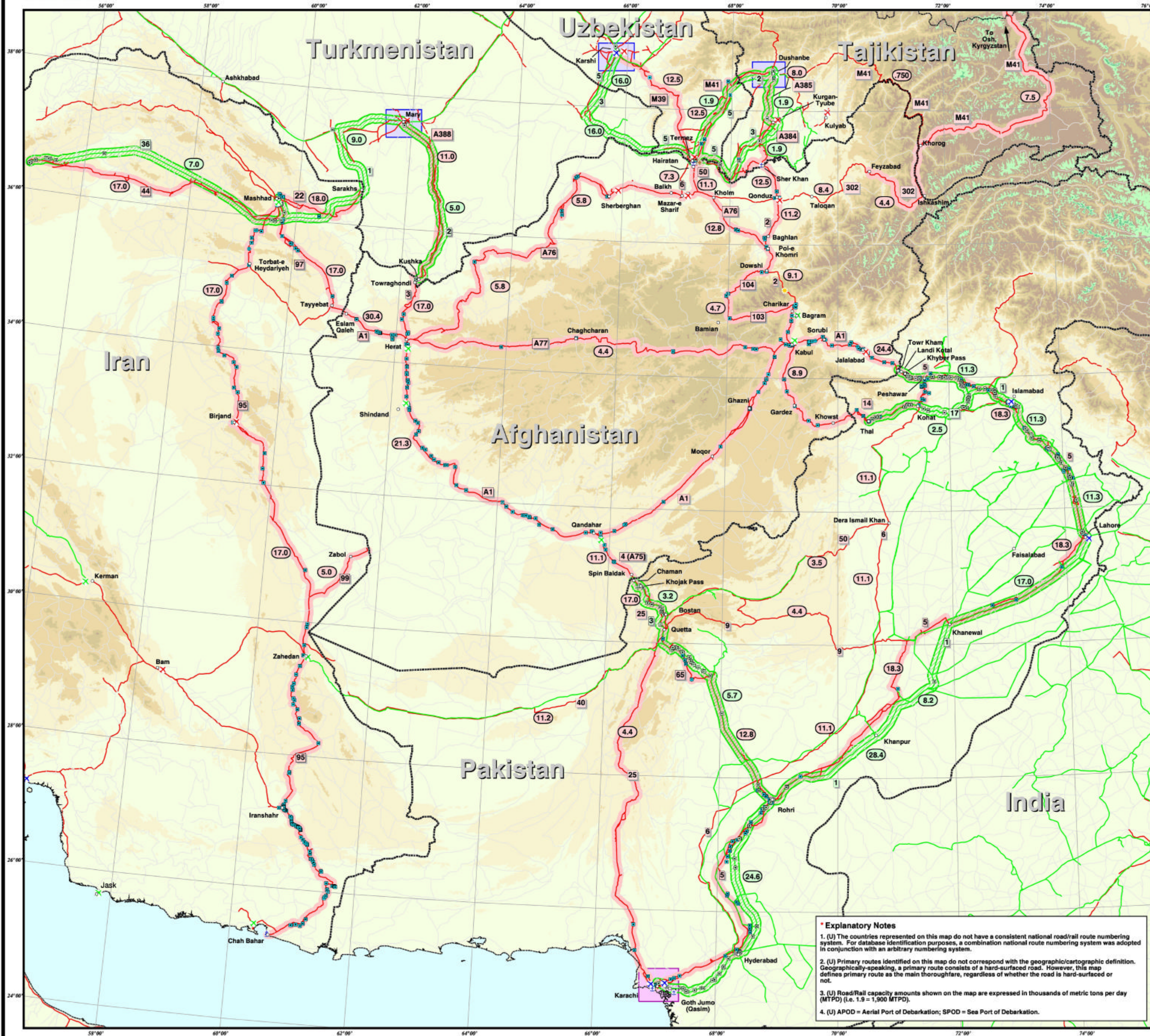
**NOTE**  
 The boundaries & names on the map do not imply Official Endorsement Or Acceptance by the United Nation.  
 For Standardization purpose AIMS uses the 32 Province 329 District boundary model.  
 For further information contact AIMS  
 E-mail: [info@aims.org.af](mailto:info@aims.org.af)  
 Web site: [www.aims.org.af](http://www.aims.org.af)  
 Coordinates: Geographic Decimal Degree  
 Datum: WGS 84  
 Date: January 2004

**LOCATION DIAGRAM**





UNCLASSIFIED



# Major LOC Routes into Afghanistan

**Road Network**

- Primary Route
- Secondary Route
- Selected Road Network
- Route Number \*
- Road capacity (MTPD) \*

**Railroad Network**

- Railroad
- Selected Railroad Network
- Route Number \*
- Rail capacity (MTPD) \*

**Ports of Debarkation**

- APOD \*
- SPOD \*

**Selected Facilities**

- C-130 Capable Airfield
- C-141 Capable Airfield
- C-5 Capable Airfield
- Port/Transshipment Facility
- Highway Bridge
- Highway Tunnel
- Blocked Highway Tunnel
- Railroad/Highway Bridges
- Railroad Bridge
- Railroad Tunnel
- Rail Transshipment Point

**Selected Cities**

- Selected Cities

**International Boundary**

- International Boundary

**Elevation Data (meters)**

- 0 - 1,000
- 1,001 - 2,000
- 2,001 - 3,000
- 3,001 - 4,000
- 4,001 - 5,000
- 5,001 - 6,000
- 6,001 - 7,000
- 7,001 - 8,850

0 50 100 150 Kilometers

December 10, 2001

Political boundaries and place names shown are not necessarily authoritative.

**Explanatory Notes**

- (U) The countries represented on this map do not have a consistent national road/rail route numbering system. For database identification purposes, a combination national route numbering system was adopted in conjunction with an arbitrary numbering system.
- (U) Primary routes identified on this map do not correspond with the geographic/cartographic definition. Geographically speaking, a primary route consists of a hard-surfaced road. However, this map defines primary route as the main thoroughfare, regardless of whether the road is hard-surfaced or not.
- (U) Road/Rail capacity amounts shown on the map are expressed in thousands of metric tons per day (MTPD) (i.e. 1.9 = 1,900 MTPD).
- (U) APOD = Aerial Port of Debarkation; SPOD = Sea Port of Debarkation.

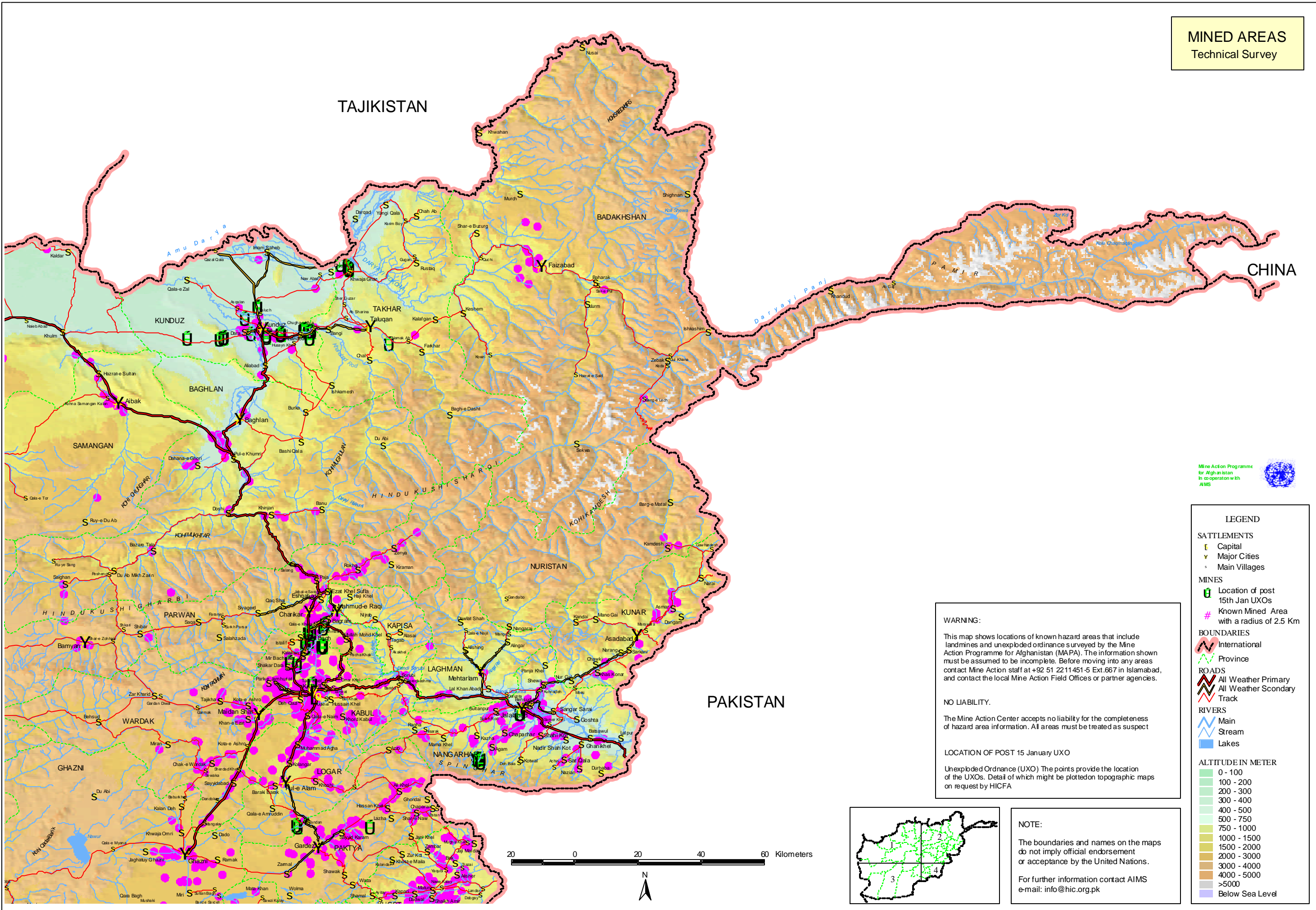


PROJECTION: Lambert Conformal Conic; WGS 84; Cent. Mer. 070E, First Std. Par. 40N, Second Std. Par. 25N

UNCLASSIFIED



**MINED AREAS**  
Technical Survey



Mine Action Programme for Afghanistan  
In co-operation with  
AIMS



**LEGEND**

**SATTELMENTS**

- Capital
- Major Cities
- Main Villages

**MINES**

- Location of post 15th Jan UXOs
- Known Mined Area with a radius of 2.5 Km

**BOUNDARIES**

- International
- Province

**ROADS**

- All Weather Primary
- All Weather Secondary
- Track

**RIVERS**

- Main
- Stream
- Lakes

**ALTITUDE IN METER**

- 0 - 100
- 100 - 200
- 200 - 300
- 300 - 400
- 400 - 500
- 500 - 750
- 750 - 1000
- 1000 - 1500
- 1500 - 2000
- 2000 - 3000
- 3000 - 4000
- 4000 - 5000
- >5000
- Below Sea Level

**WARNING:**

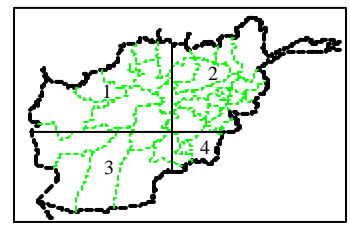
This map shows locations of known hazard areas that include landmines and unexploded ordnance surveyed by the Mine Action Programme for Afghanistan (MAPA). The information shown must be assumed to be incomplete. Before moving into any areas contact Mine Action staff at +92 51 2211451-5 Ext.667 in Islamabad, and contact the local Mine Action Field Offices or partner agencies.

**NO LIABILITY.**

The Mine Action Center accepts no liability for the completeness of hazard area information. All areas must be treated as suspect

**LOCATION OF POST 15 January UXO**

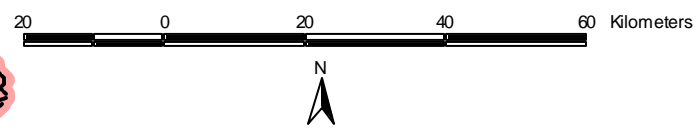
Unexploded Ordnance (UXO) The points provide the location of the UXOs. Detail of which might be plotted on topographic maps on request by HICFA

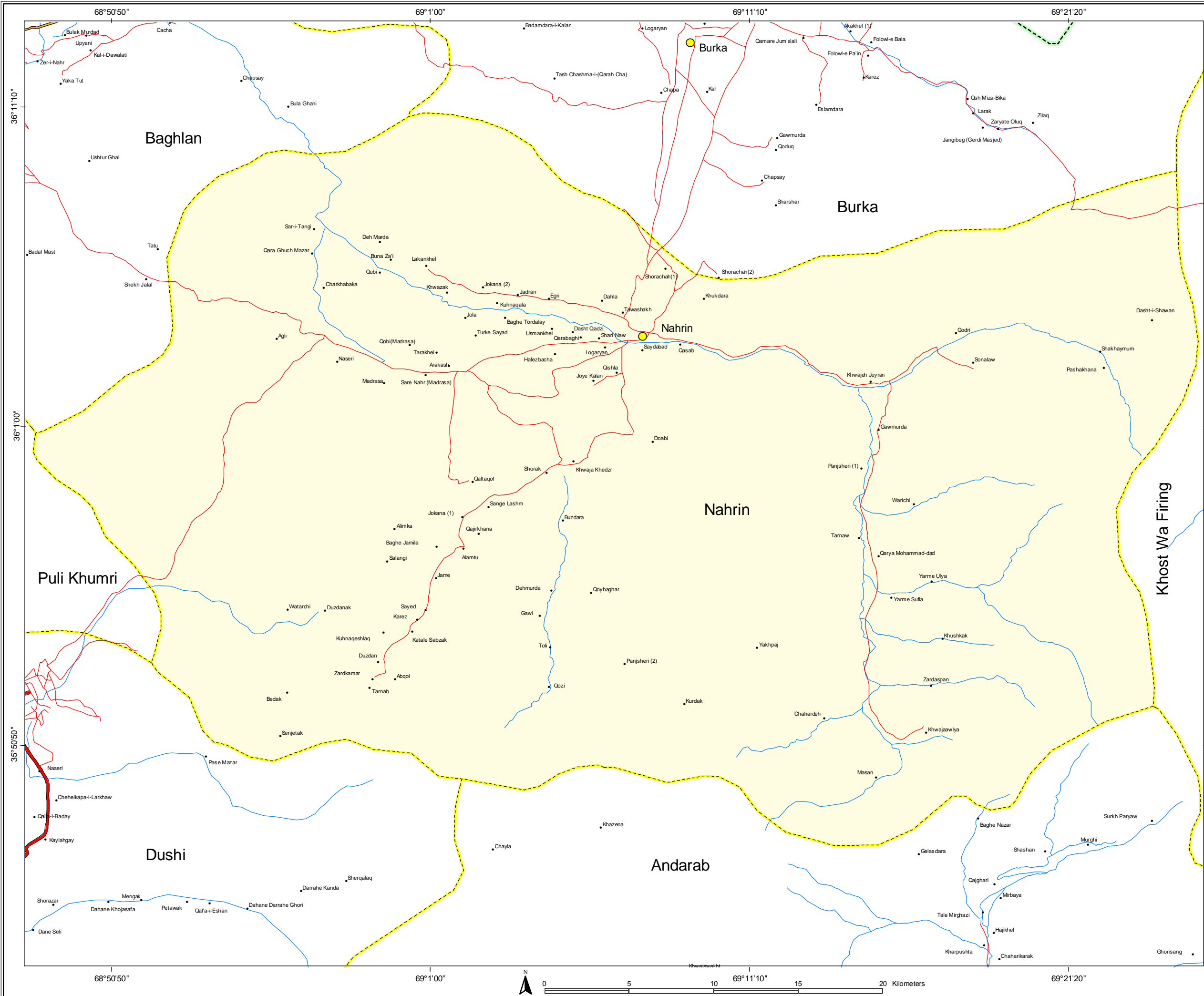


**NOTE:**

The boundaries and names on the maps do not imply official endorsement or acceptance by the United Nations.

For further information contact AIMS  
e-mail: info@hic.org.pk





## Nahrin District

Baghlan Province  
AFGHANISTAN



### LEGEND

**SETTLEMENTS**

- Capital
- Province Center
- District Center
- Villages

**BOUNDARIES**

- International
- Provincial
- District

**ROADS**

- primary
- secondary
- Track

**Drainage**

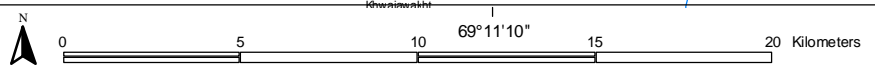
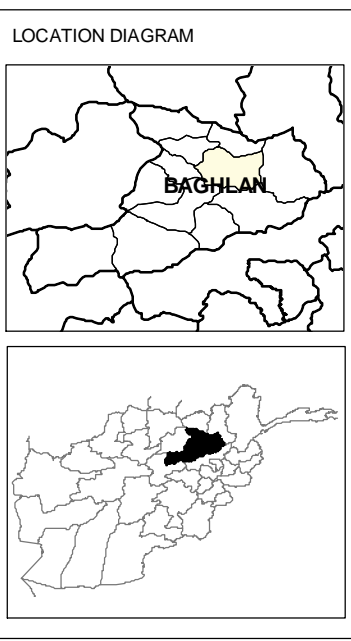
- River
- Stream
- Lake

**NOTE**

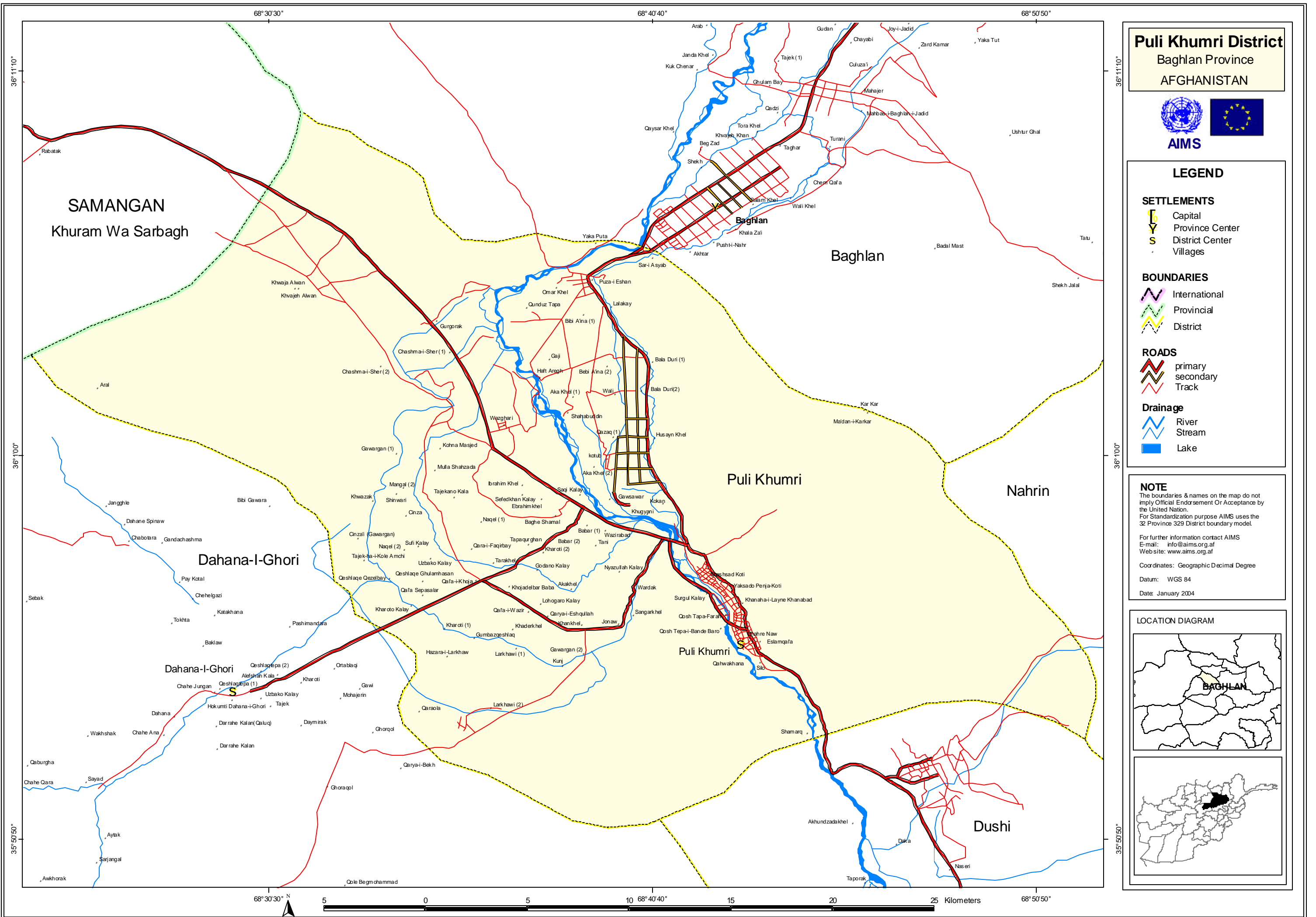
The boundaries & names on the map do not imply Official Endorsement Or Acceptance by the United Nation.  
For Standardization purpose AIMS uses the 32 Province 329 District boundary model.

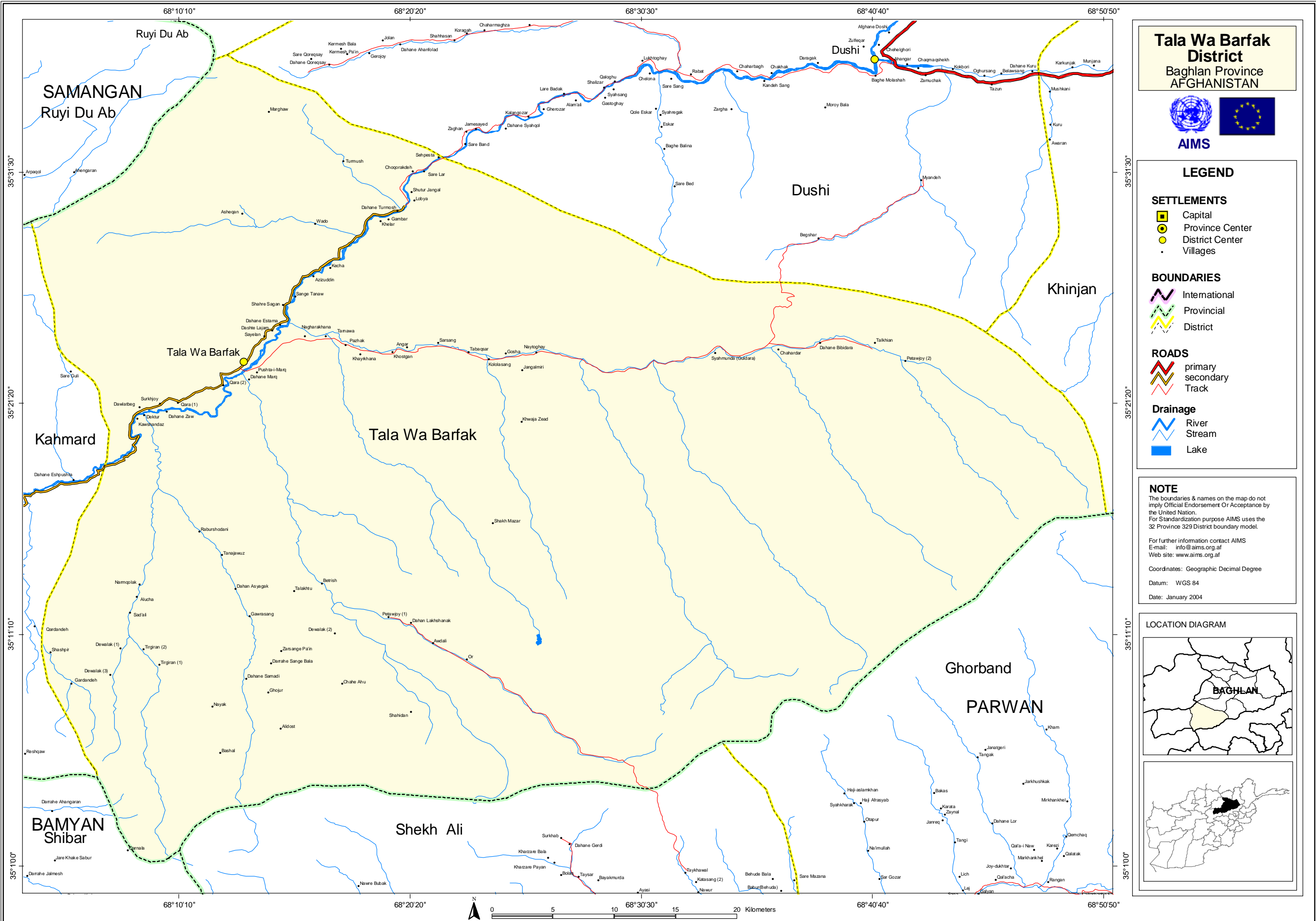
For further information contact AIMS  
E-mail: [info@aims.org.af](mailto:info@aims.org.af)  
Web site: [www.aims.org.af](http://www.aims.org.af)

Coordinates: Geographic Decimal Degree  
Datum: WGS 84  
Date: January 2004









**Tala Wa Barfak District**  
 Baghlan Province  
 AFGHANISTAN



**LEGEND**

- SETTLEMENTS**
- Capital
  - Province Center
  - District Center
  - Villages
- BOUNDARIES**
- International
  - Provincial
  - District
- ROADS**
- primary
  - secondary
  - Track
- Drainage**
- River
  - Stream
  - Lake

**NOTE**  
 The boundaries & names on the map do not imply Official Endorsement Or Acceptance by the United Nation.  
 For standardization purpose AIMS uses the 32 Province 329 District boundary model.  
 For further information contact AIMS  
 E-mail: [info@aims.org.af](mailto:info@aims.org.af)  
 Web site: [www.aims.org.af](http://www.aims.org.af)  
 Coordinates: Geographic Decimal Degree  
 Datum: WGS 84  
 Date: January 2004

**LOCATION DIAGRAM**

