

Aliabad District
Kunduz Province
AFGHANISTAN



LEGEND

SETTLEMENTS

- Capital
- Province Center
- District Center
- Villages

BOUNDARIES

- International
- Provincial
- District

ROADS

- primary
- secondary
- Track

Drainage

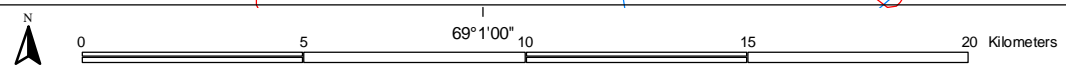
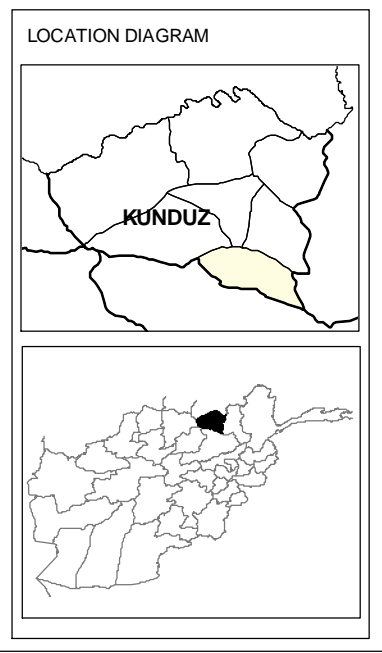
- River
- Stream
- Lake

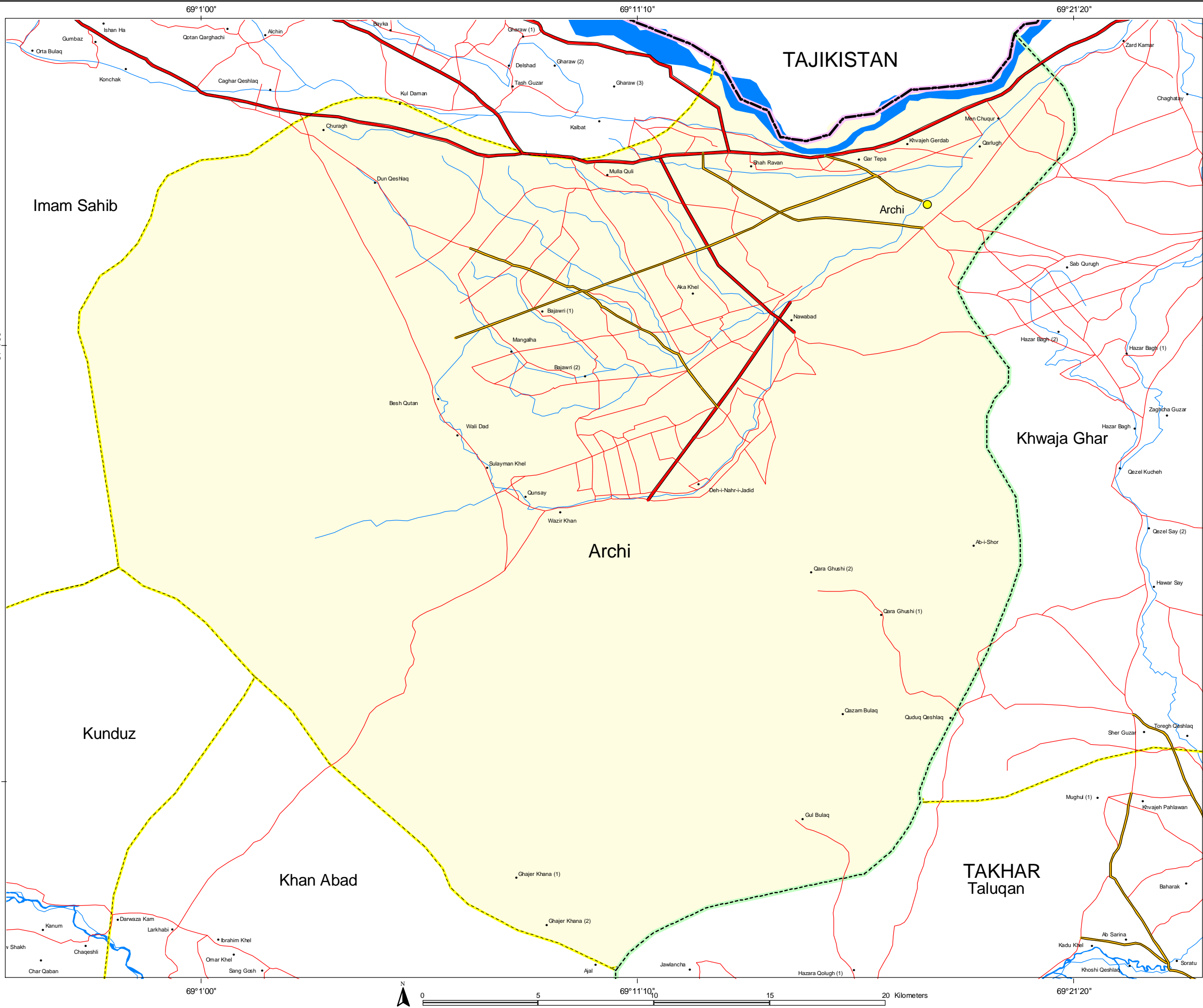
NOTE

The boundaries & names on the map do not imply Official Endorsement Or Acceptance by the United Nation.
For Standardization purpose AIMS uses the 32 Province 329 District boundary model.

For further information contact AIMS
E-mail: info@aims.org.af
Web site: www.aims.org.af

Coordinates: Geographic Decimal Degree
Datum: WGS 84
Date: January 2004





Archi District
Kunduz Province
AFGHANISTAN



LEGEND

SETTLEMENTS

- Capital
- Province Center
- District Center
- Villages

BOUNDARIES

- International
- Provincial
- District

ROADS

- primary
- secondary
- Track

Drainage

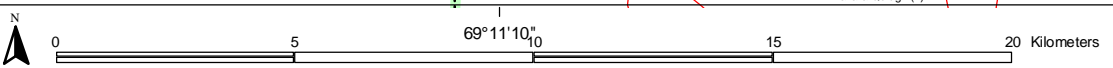
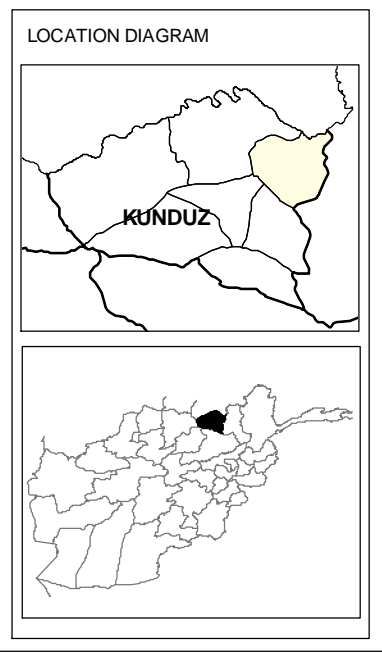
- River
- Stream
- Lake

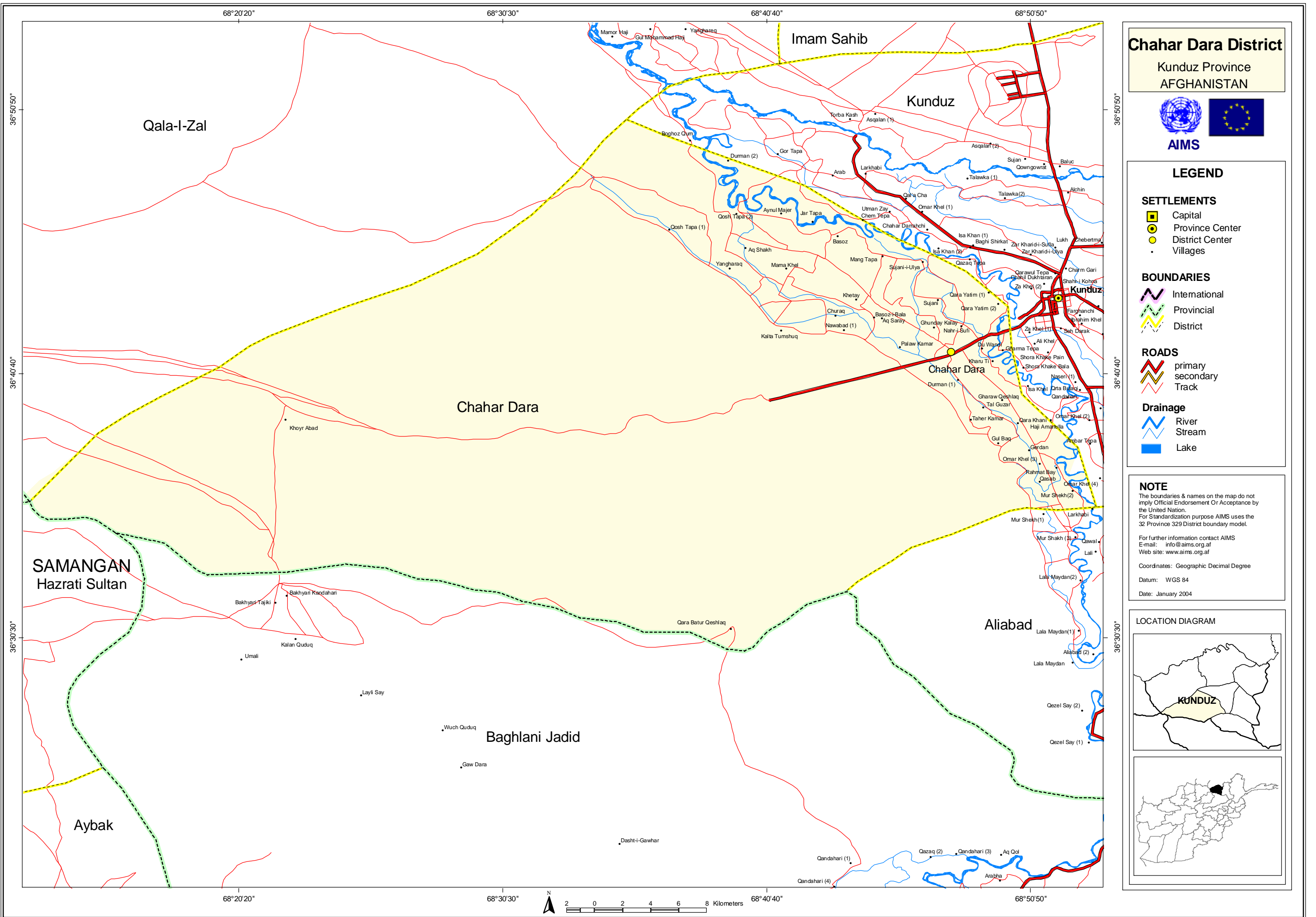
NOTE

The boundaries & names on the map do not imply Official Endorsement Or Acceptance by the United Nation.
For Standardization purpose AIMS uses the 32 Province 329 District boundary model.

For further information contact AIMS
E-mail: info@aims.org.af
Web site: www.aims.org.af

Coordinates: Geographic Decimal Degree
Datum: WGS 84
Date: January 2004





Chahar Dara District

Kunduz Province
AFGHANISTAN



LEGEND

SETTLEMENTS

- Capital
- Province Center
- District Center
- Villages

BOUNDARIES

- International
- Provincial
- District

ROADS

- primary
- secondary
- Track

Drainage

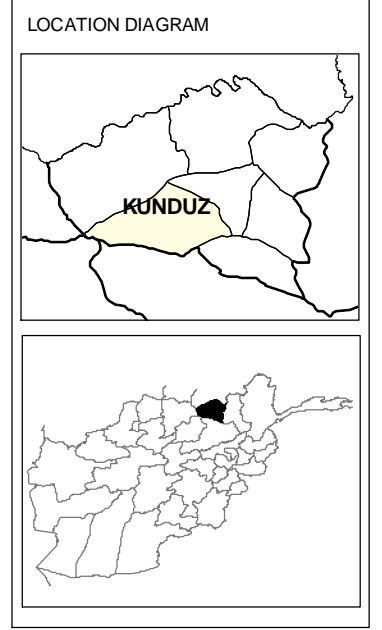
- River
- Stream
- Lake

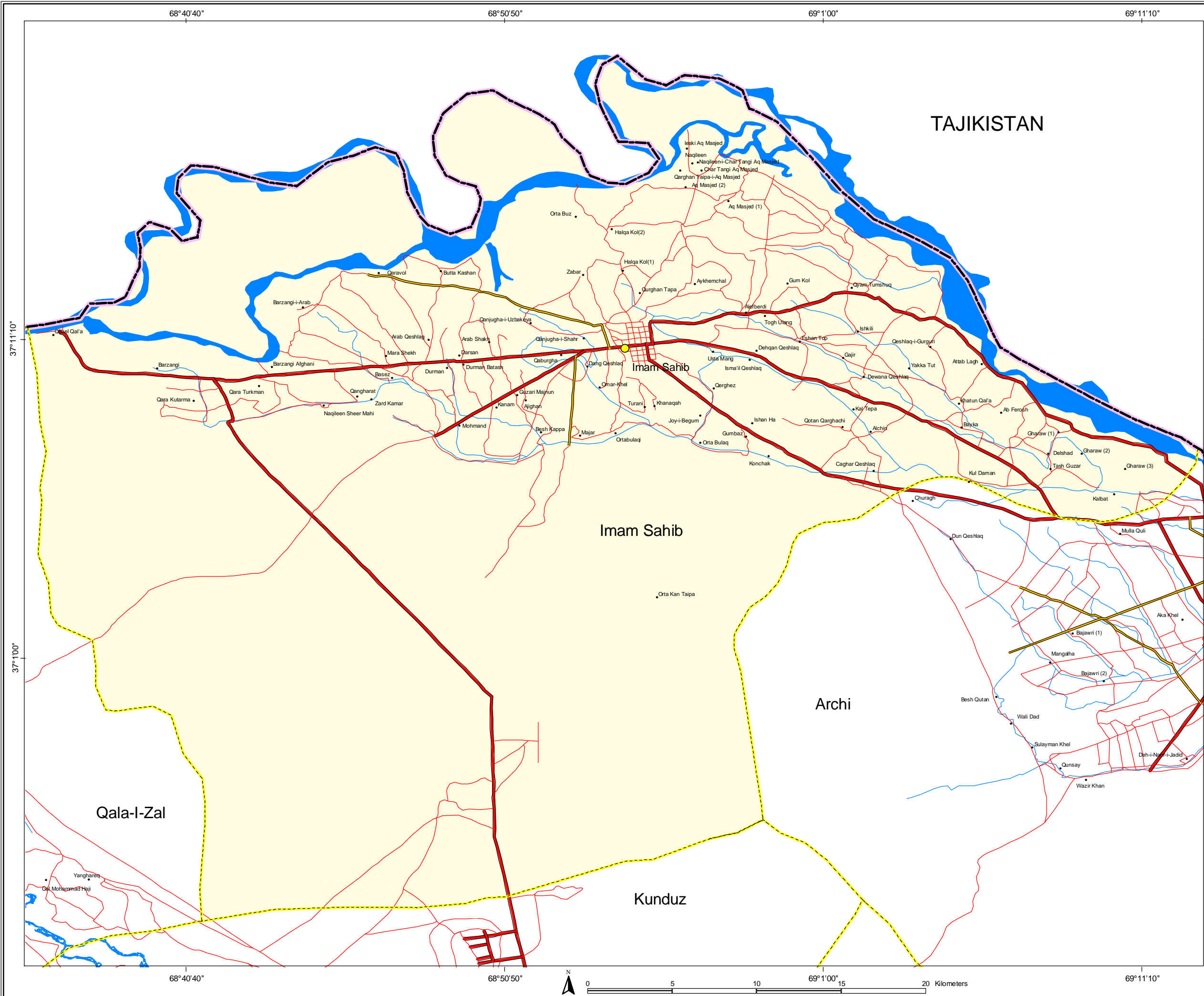
NOTE

The boundaries & names on the map do not imply Official Endorsement Or Acceptance by the United Nation.
For Standardization purpose AIMS uses the 32 Province 329 District boundary model.

For further information contact AIMS
E-mail: info@aims.org.af
Web site: www.aims.org.af

Coordinates: Geographic Decimal Degree
Datum: WGS 84
Date: January 2004





Imam Sahib District
Kunduz Province
AFGHANISTAN



LEGEND

SETTLEMENTS

- Capital
- Province Center
- District Center
- Villages

BOUNDARIES

- International
- Provincial
- District

ROADS

- primary
- secondary
- Track

Drainage

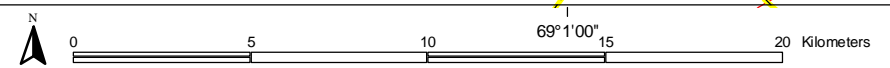
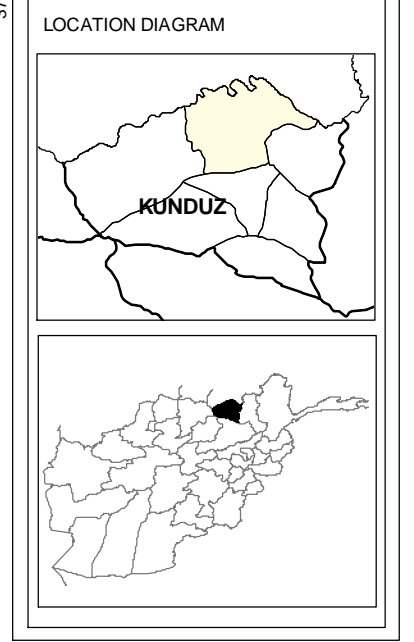
- River
- Stream
- Lake

NOTE

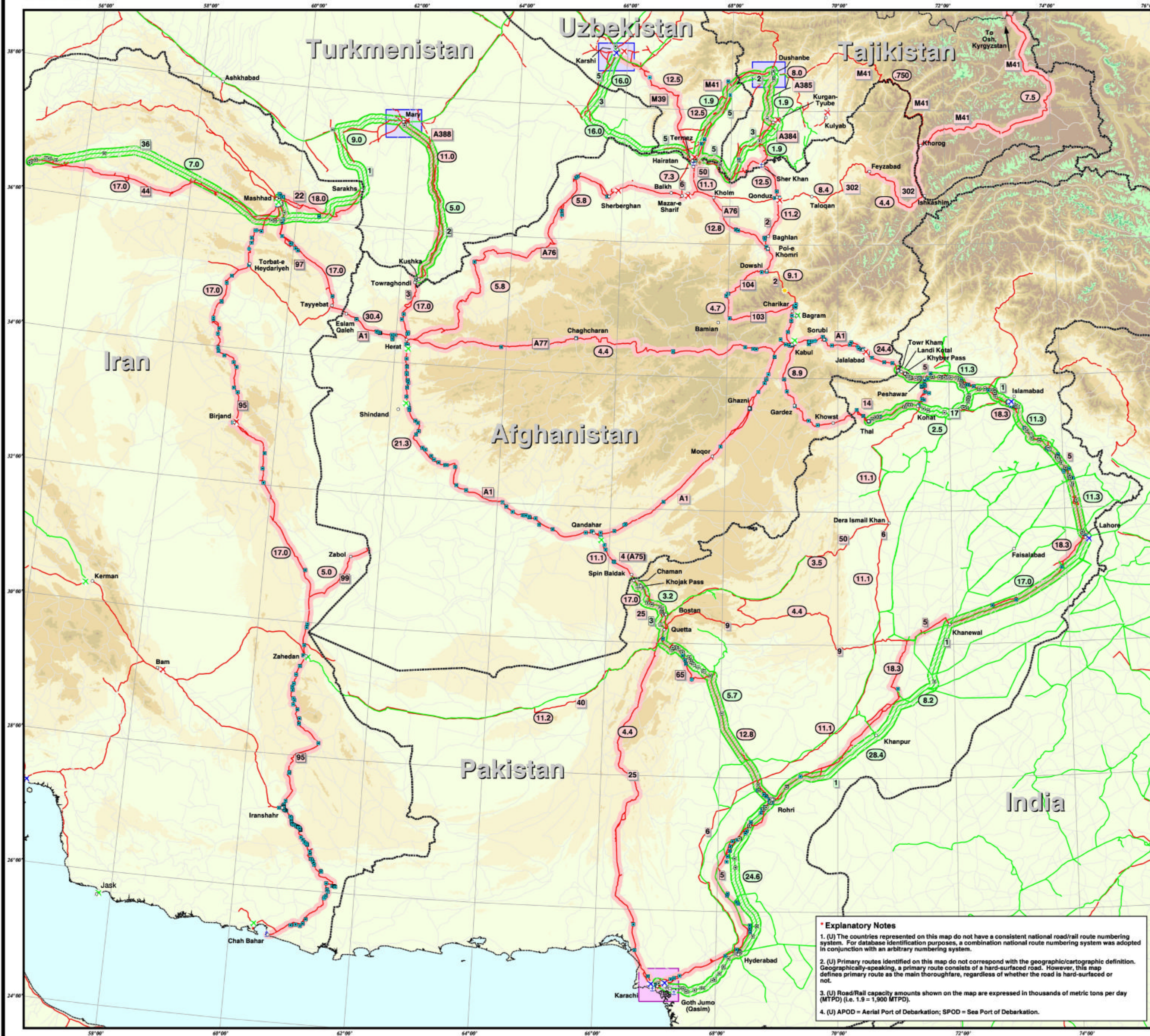
The boundaries & names on the map do not imply Official Endorsement Or Acceptance by the United Nation.
For Standardization purpose AIMS uses the 32 Province 329 District boundary model.

For further information contact AIMS
E-mail: info@aims.org.af
Web site: www.aims.org.af

Coordinates: Geographic Decimal Degree
Datum: WGS 84
Date: January 2004



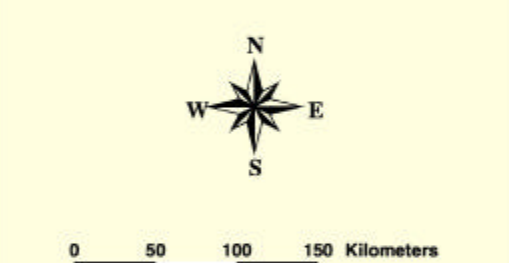
UNCLASSIFIED



Major LOC Routes into Afghanistan

- Road Network**
 - Primary Route
 - Secondary Route
 - Selected Road Network
 - Route Number *
 - Road capacity (MTPD) *
- Railroad Network**
 - Railroad
 - Selected Railroad Network
 - Route Number *
 - Rail capacity (MTPD) *
- Ports of Debarkation**
 - APOD *
 - SPOD *
- Selected Facilities**
 - C-130 Capable Airfield
 - C-141 Capable Airfield
 - C-5 Capable Airfield
 - Port/Transshipment Facility
 - Highway Bridge
 - Highway Tunnel
 - Blocked Highway Tunnel
 - Railroad/Highway Bridges
 - Railroad Bridge
 - Railroad Tunnel
 - Rail Transshipment Point

- Selected Cities**
- International Boundary**
- Elevation Data (meters)**
 - 0 - 1,000
 - 1,001 - 2,000
 - 2,001 - 3,000
 - 3,001 - 4,000
 - 4,001 - 5,000
 - 5,001 - 6,000
 - 6,001 - 7,000
 - 7,001 - 8,850



December 10, 2001
 Political boundaries and place names shown are not necessarily authoritative.

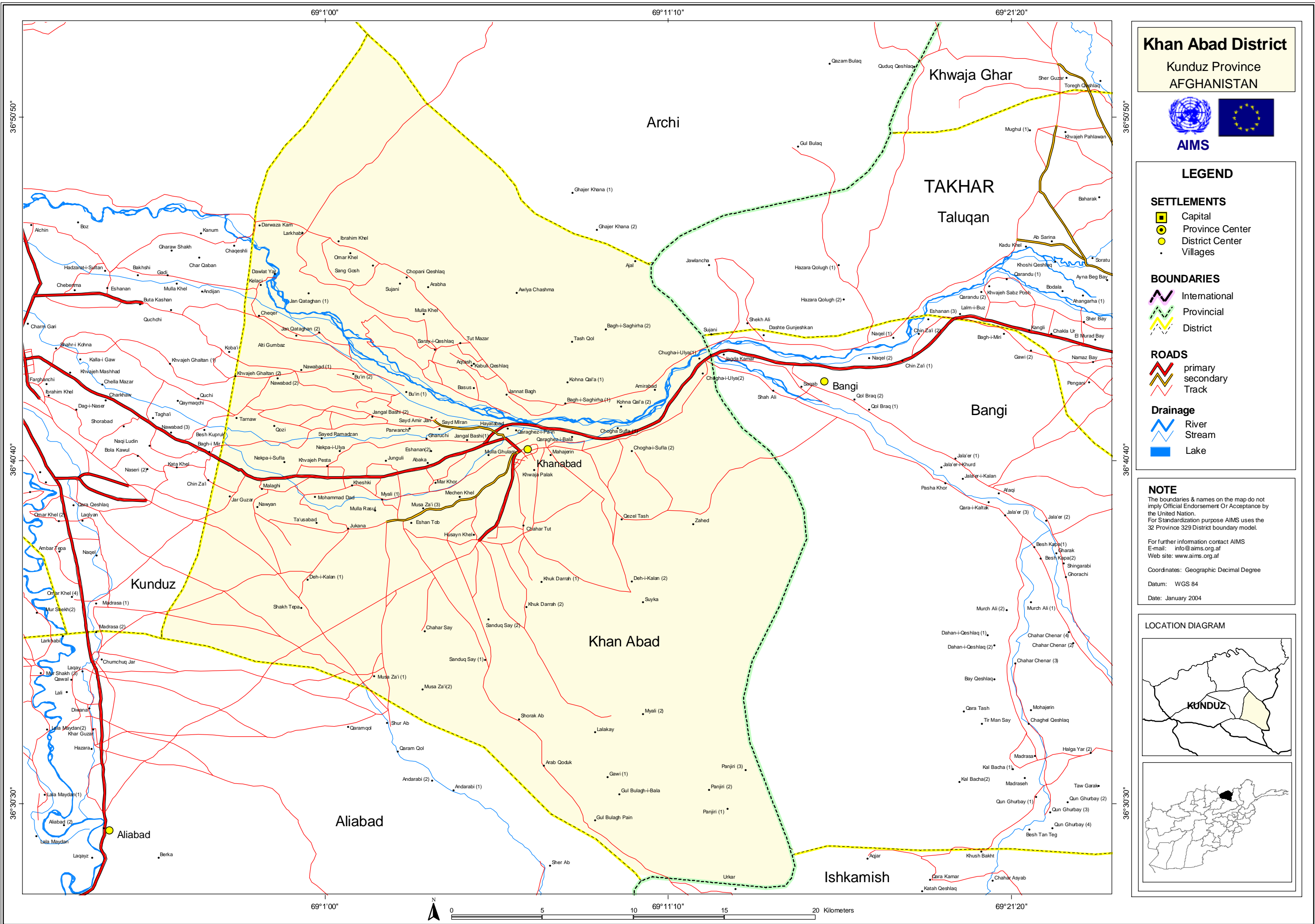


Explanatory Notes

- (U) The countries represented on this map do not have a consistent national road/rail route numbering system. For database identification purposes, a combination national route numbering system was adopted in conjunction with an arbitrary numbering system.
- (U) Primary routes identified on this map do not correspond with the geographic/cartographic definition. Geographically speaking, a primary route consists of a hard-surfaced road. However, this map defines primary route as the main thoroughfare, regardless of whether the road is hard-surfaced or not.
- (U) Road/Rail capacity amounts shown on the map are expressed in thousands of metric tons per day (MTPD) (i.e. 1.9 = 1,900 MTPD).
- (U) APOD = Aerial Port of Debarkation; SPOD = Sea Port of Debarkation.

PROJECTION: Lambert Conformal Conic; WGS 84; Cent. Mer. 070E, First Std. Par. 40N, Second Std. Par. 25N

UNCLASSIFIED



Khan Abad District
Kunduz Province
AFGHANISTAN



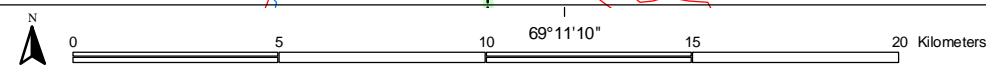
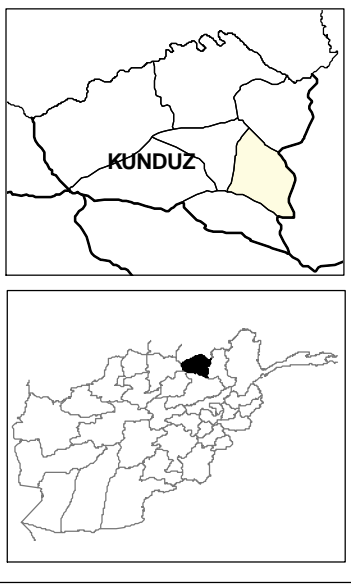
LEGEND

- SETTLEMENTS**
- Capital
 - Province Center
 - District Center
 - Villages
- BOUNDARIES**
- International
 - Provincial
 - District
- ROADS**
- primary
 - secondary
 - Track
- Drainage**
- River
 - Stream
 - Lake

NOTE
The boundaries & names on the map do not imply Official Endorsement Or Acceptance by the United Nation.
For Standardization purpose AIMS uses the 32 Province 329 District boundary model.
For further information contact AIMS
E-mail: info@aims.org.af
Web site: www.aims.org.af

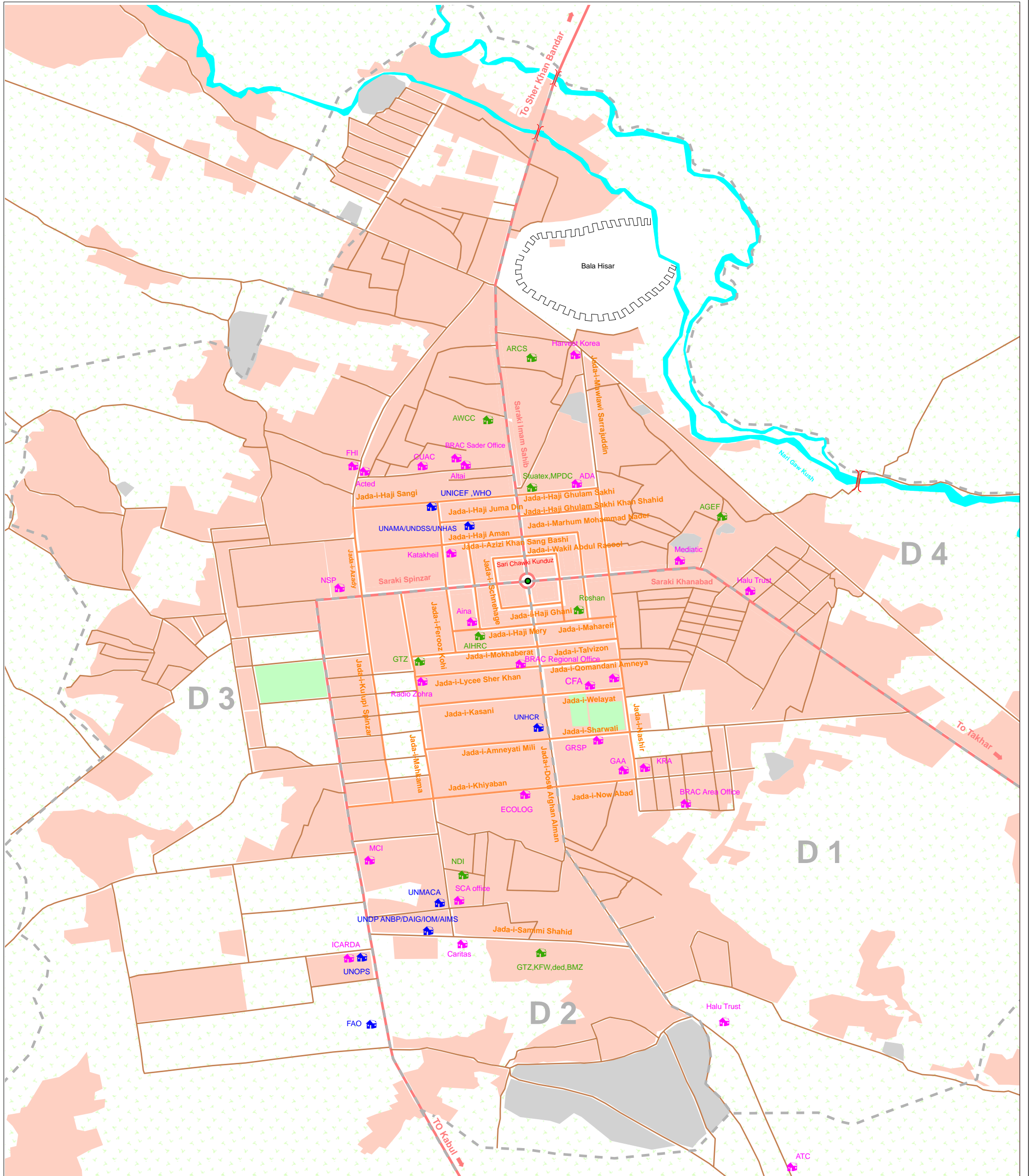
Coordinates: Geographic Decimal Degree
Datum: WGS 84
Date: January 2004

LOCATION DIAGRAM



KUNDUZ CITY MAP

Location Of UN Agencies And International NGOs



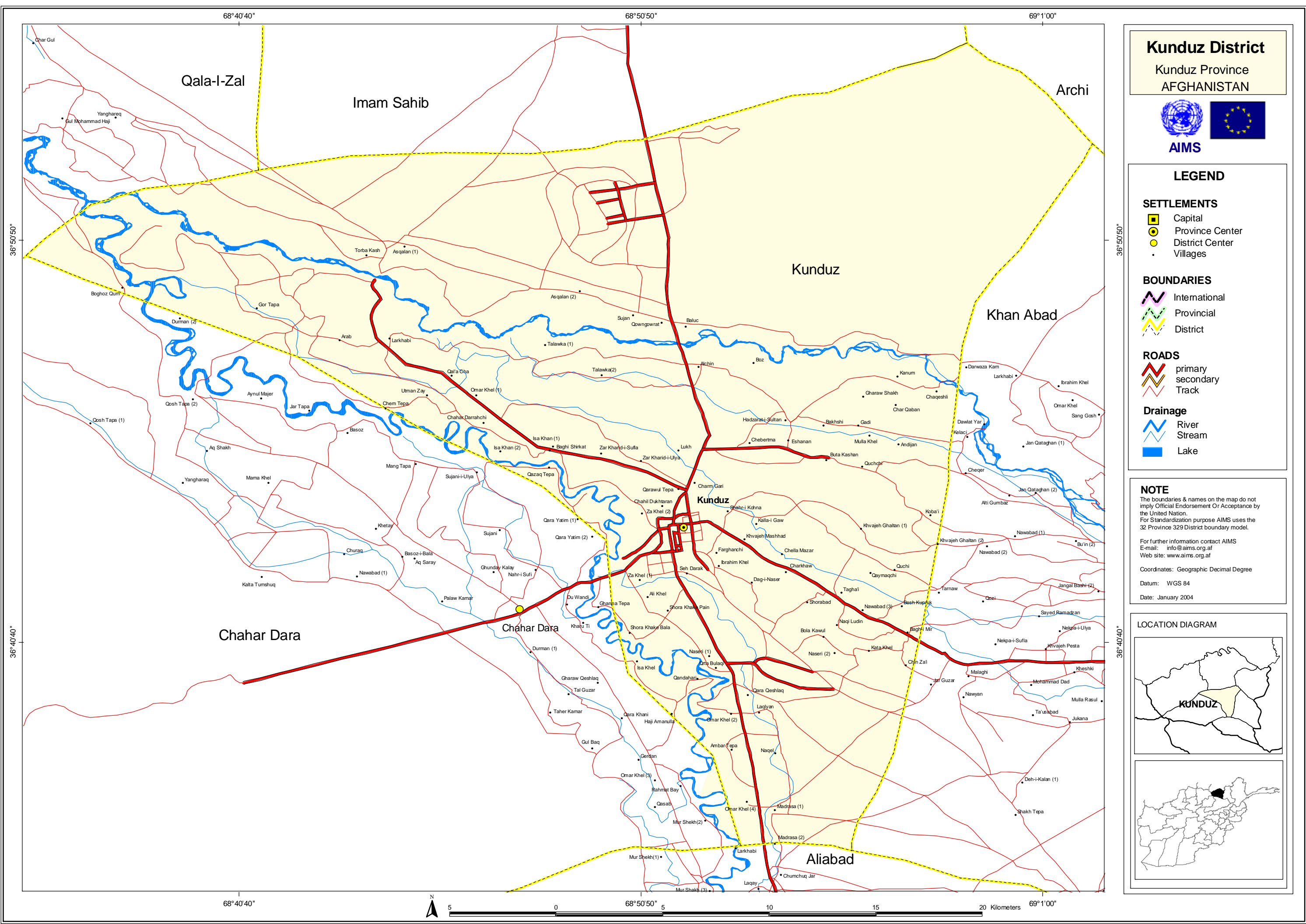
LEGEND

BOUNDARY	DRAINAGE	PLACE OF INTEREST	Agencies
District	River	Historical Wall	UN Agencies
ROAD	URBAN LAND USE	ANNOTATION	International Organization
Highway	Built up Area	D 1 District Number	International NGO
Primary	Cemetery	Bala Hisar Area Name	
Secondary	Cultivated Area	Jada-i- Spinzar Road Name	
Bridge	Park	Sari Chawki Kunduz Square Name	
		Nari Gaw Kosh River Name	

SOURCE:
 1- IKONOS Satellite Imagery-one Meter Resolution (2000-2002)
 Map Projection: Geographic
 Geodetic Datum:WGS 84
 Map prepared by AIMS Regional office Kunduz
 For further information contact AIMS at
 Email: info@aims.org.af
 Website: www.aims.org.af

0 75 150 300 450 600 750 Meters

Print Date : July 11 2007



Kunduz District

Kunduz Province
AFGHANISTAN



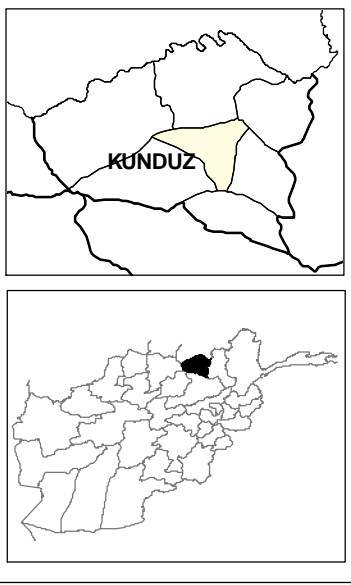
LEGEND

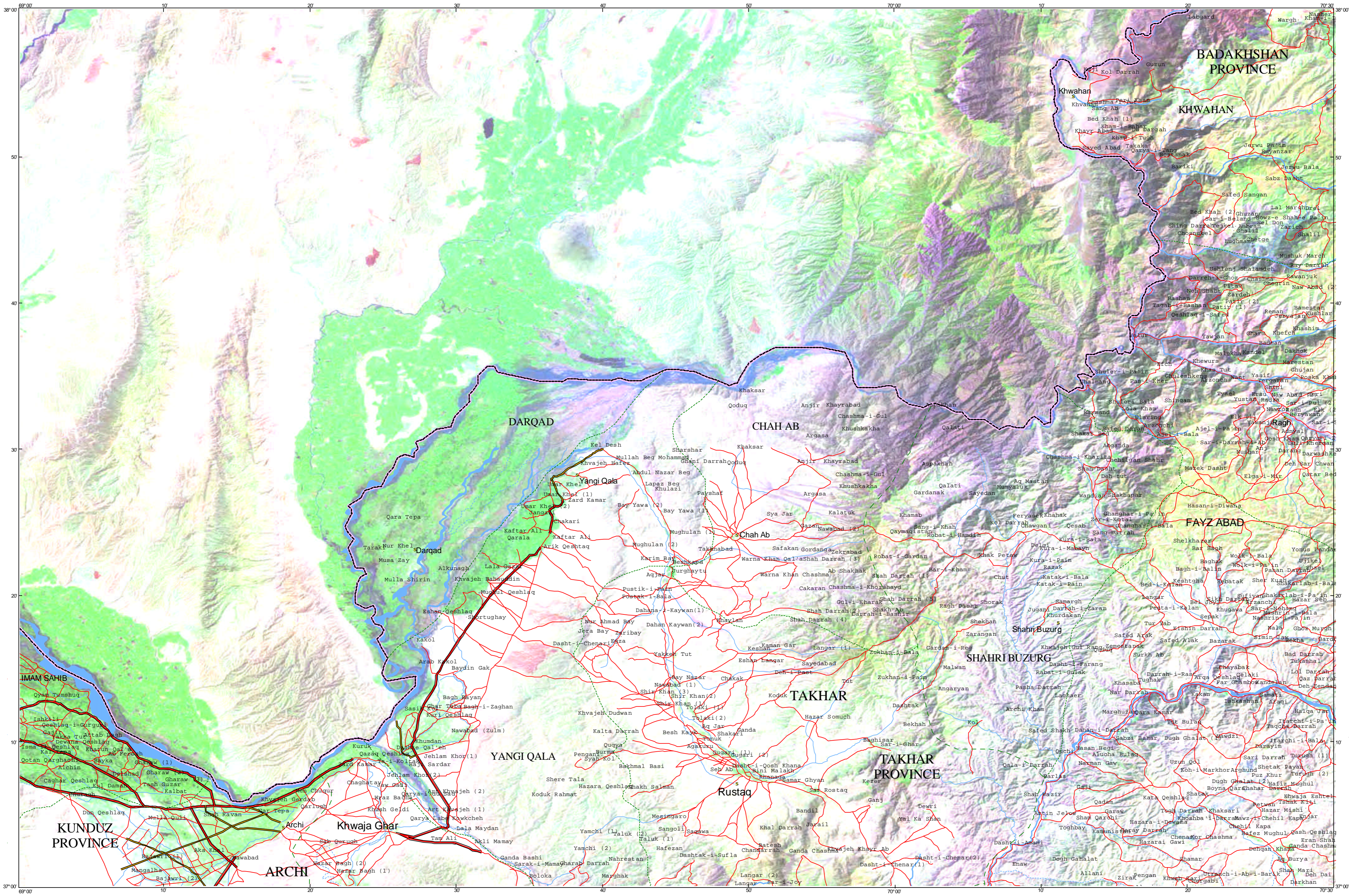
- SETTLEMENTS**
- Capital
 - Province Center
 - District Center
 - Villages
- BOUNDARIES**
- International
 - Provincial
 - District
- ROADS**
- primary
 - secondary
 - Track
- Drainage**
- River
 - Stream
 - Lake

NOTE
The boundaries & names on the map do not imply Official Endorsement Or Acceptance by the United Nation.
For Standardization purpose AIMS uses the 32 Province 329 District boundary model.
For further information contact AIMS
E-mail: info@aims.org.af
Web site: www.aims.org.af

Coordinates: Geographic Decimal Degree
Datum: WGS 84
Date: January 2004

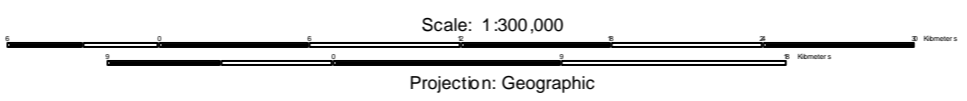
LOCATION DIAGRAM



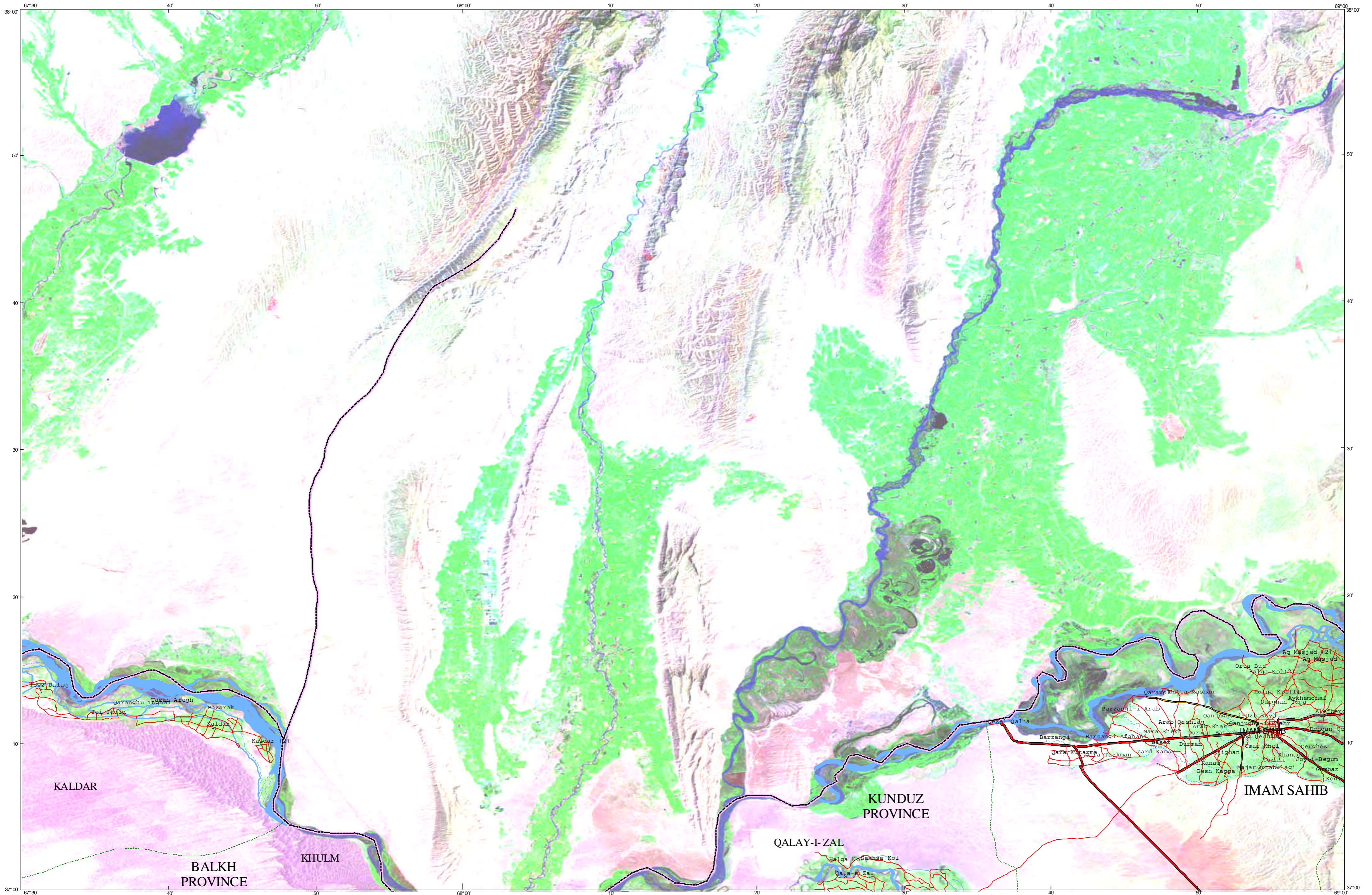


The boundaries and names on the maps do not imply official endorsement or acceptance by the United Nations.

For further information contact AIMS
e-mail : info@ic.org.pk

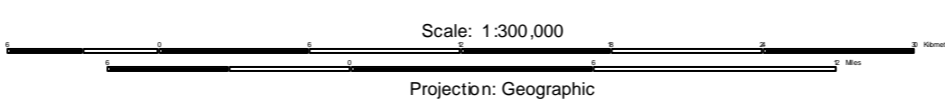


- Boundaries
 - International
 - Province
 - District
- Rivers
 - Main
 - Stream
 - Intermittent drainage
- Roads
 - All weather primary
 - All weather secondary
 - Track
- Capitals
 - Province town
 - District town
 - Village
- Lakes



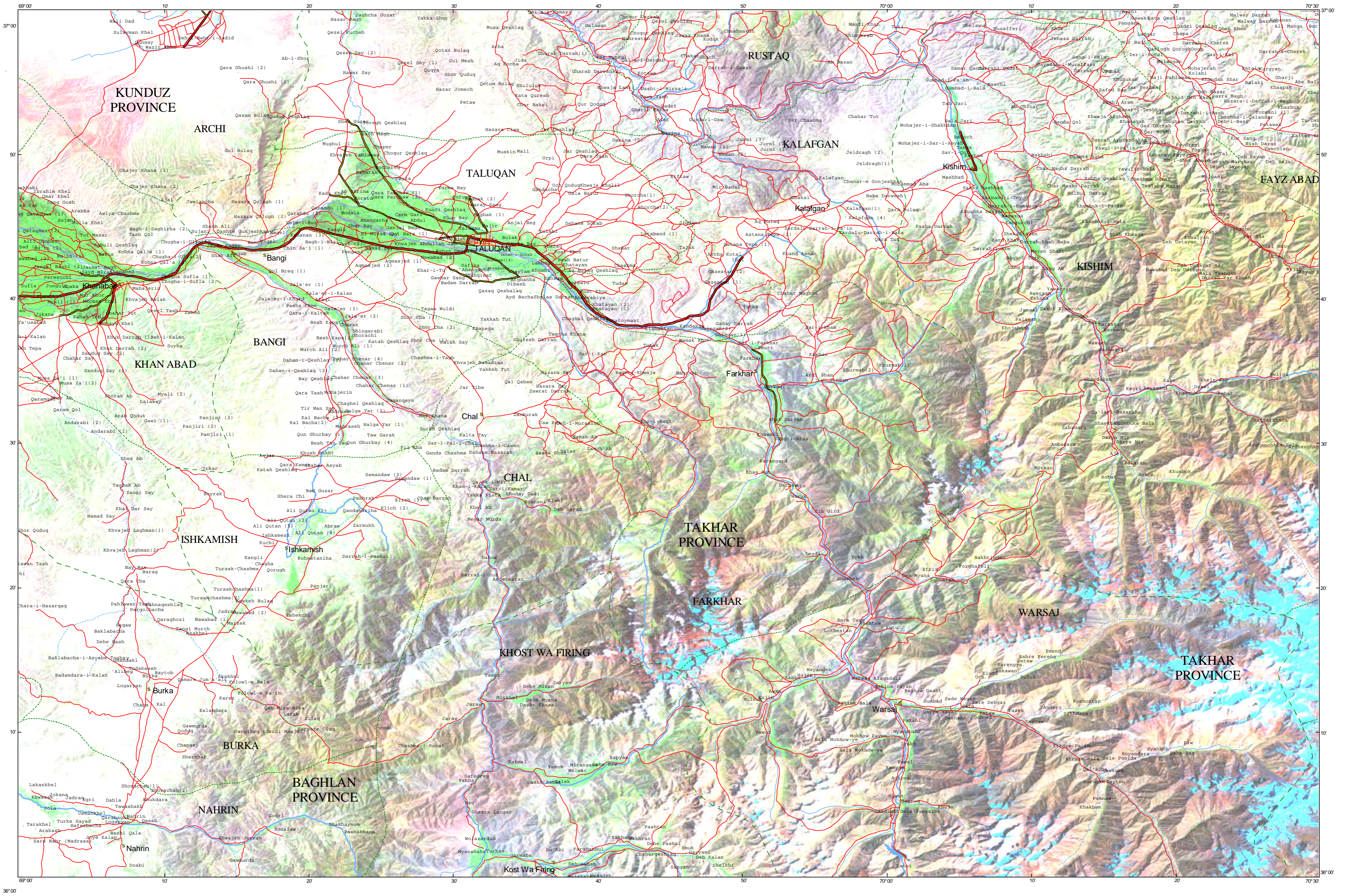
The boundaries and names on the maps do not imply official endorsement or acceptance by the United Nations.

For further information contact AIMS
e-mail : info@hic.org.pk



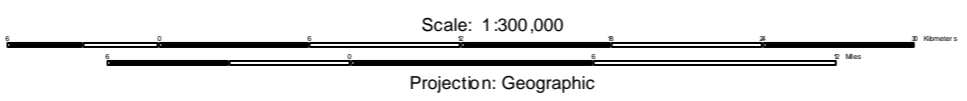
- | | | | |
|---------------|-----------------------|-----------------------|---------------|
| International | Main | All weather primary | Capital |
| Province | Stream | All weather secondary | Province town |
| District | Intermittent drainage | Track | District town |
| | Lakes | | Village |

Sheet No: PJ42-10



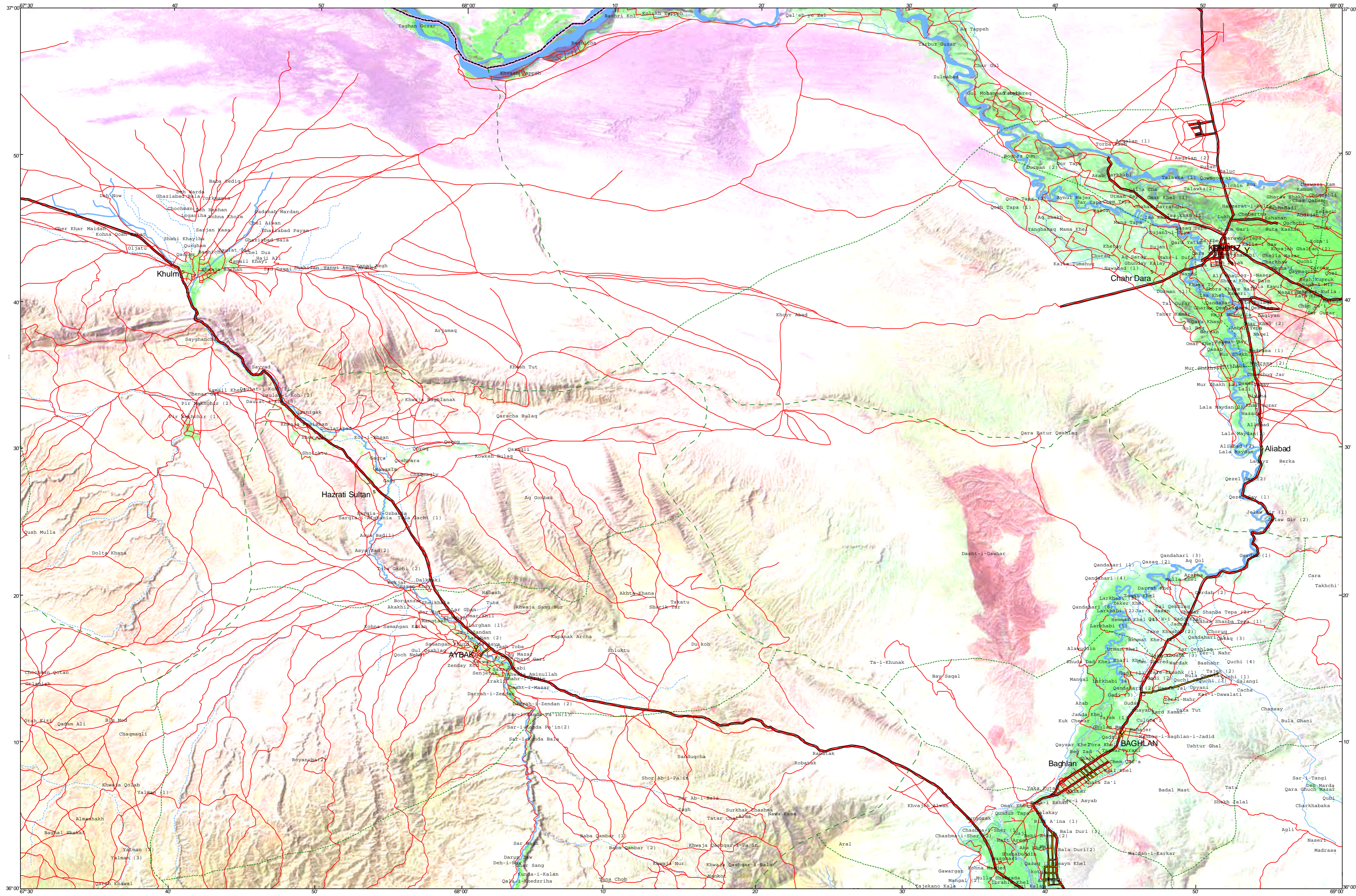
The boundaries and names on the maps do not imply official endorsement or acceptance by the United Nations.

For further information contact AIMS
e-mail : info@nic.org.pk



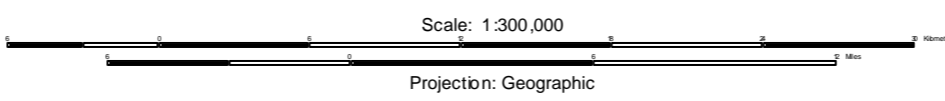
- Boundaries
 - International
 - Province
 - District
- Rivers
 - Main
 - Stream
 - Intermittent drainage
 - Lakes
- Roads
 - All weather primary
 - Other secondary
 - Track
- Capital
 - Province town
 - District town
 - Village

Sheet No: P.42-15



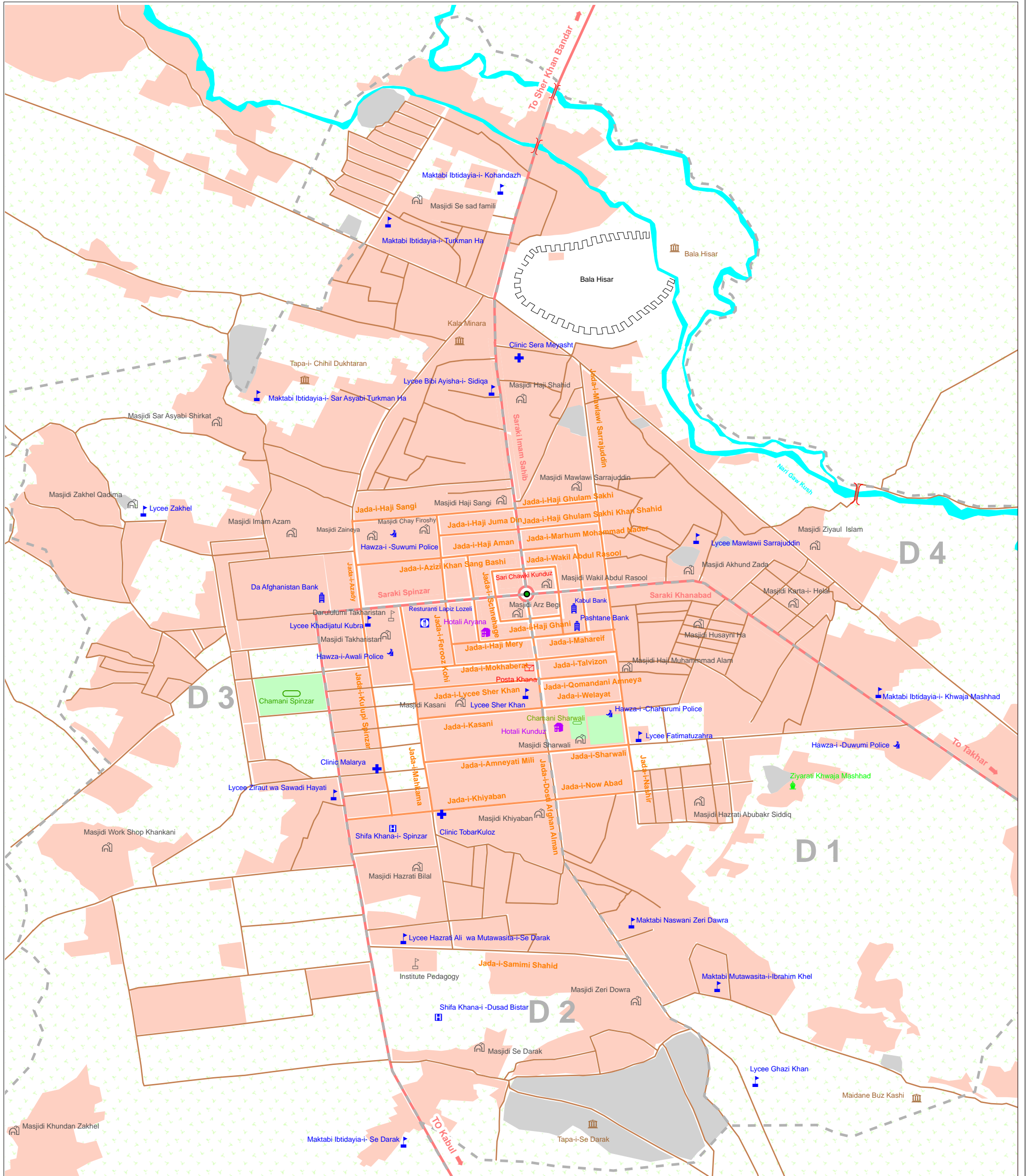
The boundaries and names on the maps do not imply official endorsement or acceptance by the United Nations.

For further information contact AIMS
e-mail : info@hic.org.pk



- Boundaries
 - International
 - Province
 - District
- Rivers
 - Main
 - Stream
 - Intermittent drainage
 - Lakes
- Roads
 - All weather primary
 - All weather secondary
 - Track
- Capital
 - Province town
 - District town
 - Village

KUNDUZ CITY MAP



LEGEND

BOUNDARY	DRAINAGE	PLACE OF INTEREST	ANNOTATION
District	River	Bank	District Number
ROAD	URBAN LAND USE	Police Station	Area Name
Highway	Built up Area	Post Office	Road Name
Primary	Cemetery	Restaurant	Square Name
Secondary	Cultivated Area	College	River Name
Bridge	Park	Clinic	
		Hospital	
		Hotel	
		Mosque	
		Shrine	
		Stadium	

SOURCE:

- 1- IKONOS Satellite Imagery-one Meter Resolution (2000-2002)
- 2- Data Collection and ground truthing done by AIMS NE ,Kunduz Municipality and Kunduz Information & Culture Department (Dec-2004)

Map Projection: Geographic
 Geodetic Datum:WGS 84
 Map prepared by AIMS Regional office Kunduz
 For further information contact AIMS at
 Email: info@aims.org.af
 Website: www.aims.org.af

0 75 150 300 450 600 750 Meters

Print Date : July 12 2007

Kunduz Health Facilities

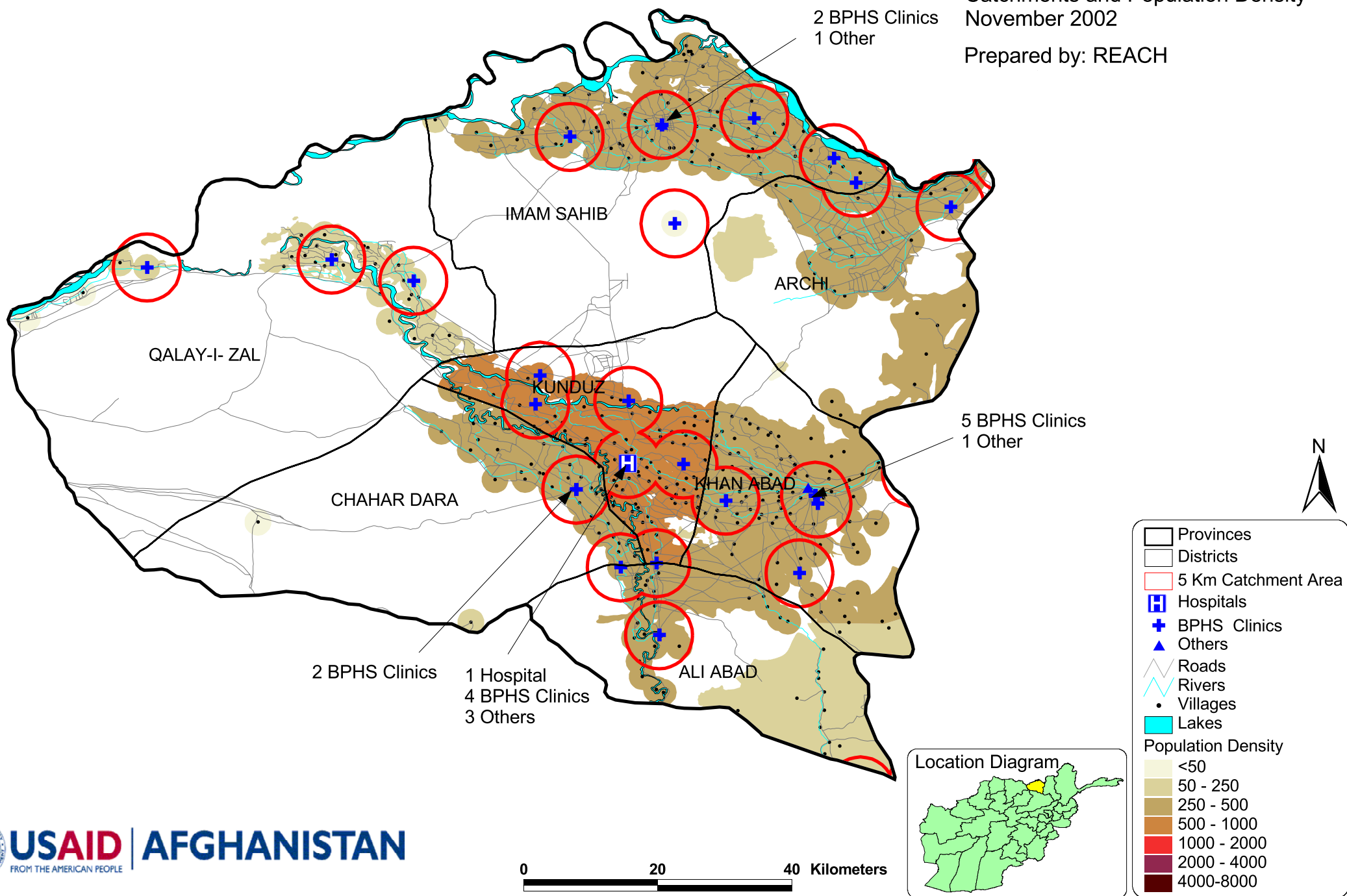
June 2005

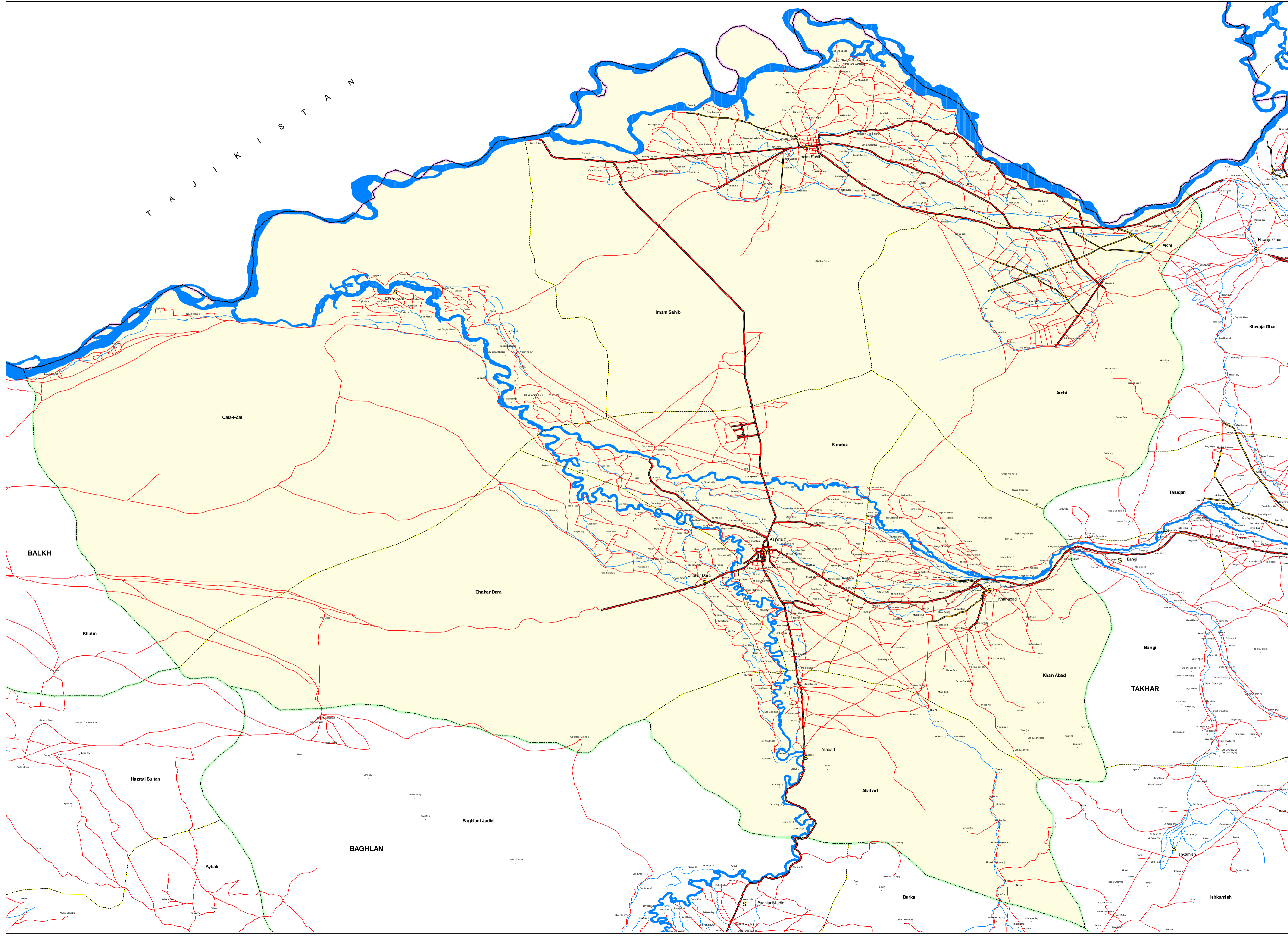
In some instances more than one facilities share the same GeoCode. These instances identifies by an arrow.

The boundaries and names on the map do not imply official endorsement or acceptance by the United Nations.

Catchments and Population Density
November 2002

Prepared by: REACH





LEGEND

BOUNDARIES

- International
- Province
- District

ROADS

- All weather primary
- All weather secondary
- Track

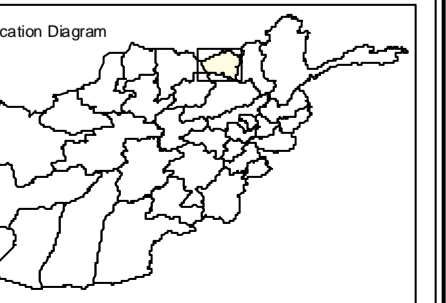
RIVERS

- Main
- Stream
- Lake

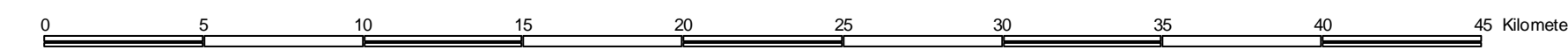
SETTLEMENTS

- Capital
- Province Center
- District Center
- Village

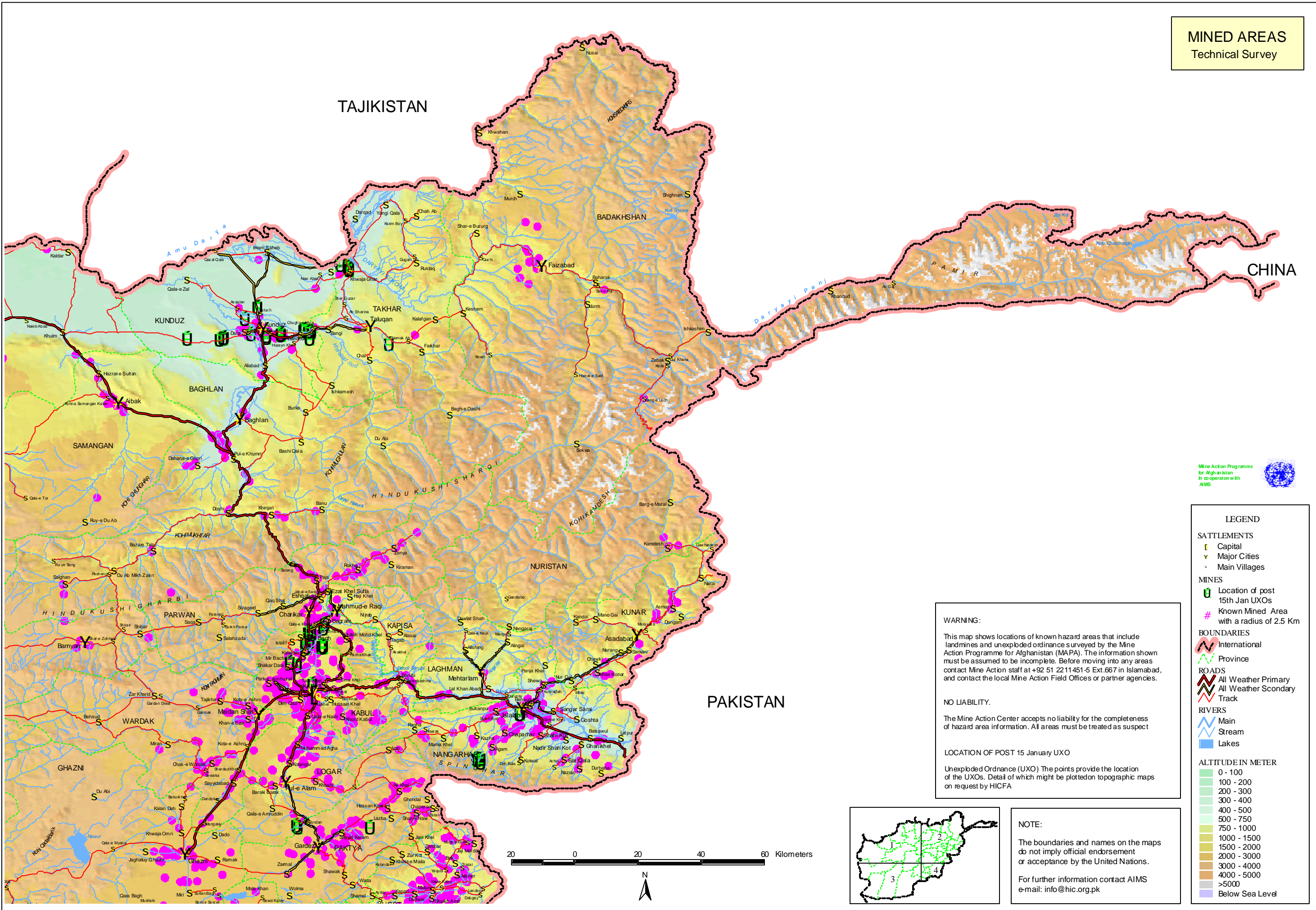
Note:
The boundaries and names on the maps do not imply official endorsement or acceptance by the United Nations.
For further information contact AIMS.
Email: info@aims.org.af
<http://www.aims.org.af>
Print date: November 2003



Administrative boundaries are the 32 province 329 district model.



MINED AREAS
Technical Survey



Mine Action Programme for Afghanistan
In co-operation with
AIMS



LEGEND

SATTELMENTS

- Capital
- Major Cities
- Main Villages

MINES

- Location of post 15th Jan UXOs
- Known Mined Area with a radius of 2.5 Km

BOUNDARIES

- International
- Province

ROADS

- All Weather Primary
- All Weather Secondary
- Track

RIVERS

- Main
- Stream
- Lakes

ALTITUDE IN METER

- 0 - 100
- 100 - 200
- 200 - 300
- 300 - 400
- 400 - 500
- 500 - 750
- 750 - 1000
- 1000 - 1500
- 1500 - 2000
- 2000 - 3000
- 3000 - 4000
- 4000 - 5000
- >5000
- Below Sea Level

WARNING:

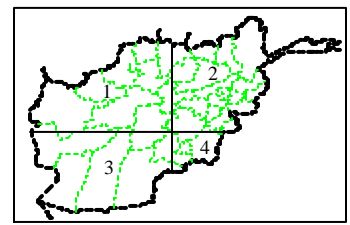
This map shows locations of known hazard areas that include landmines and unexploded ordnance surveyed by the Mine Action Programme for Afghanistan (MAPA). The information shown must be assumed to be incomplete. Before moving into any areas contact Mine Action staff at +92 51 2211451-5 Ext.667 in Islamabad, and contact the local Mine Action Field Offices or partner agencies.

NO LIABILITY.

The Mine Action Center accepts no liability for the completeness of hazard area information. All areas must be treated as suspect

LOCATION OF POST 15 January UXO

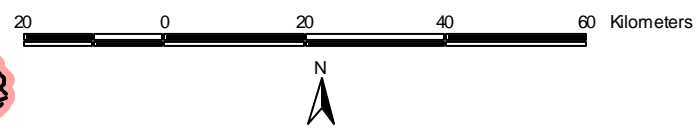
Unexploded Ordnance (UXO) The points provide the location of the UXOs. Detail of which might be plotted on topographic maps on request by HICFA

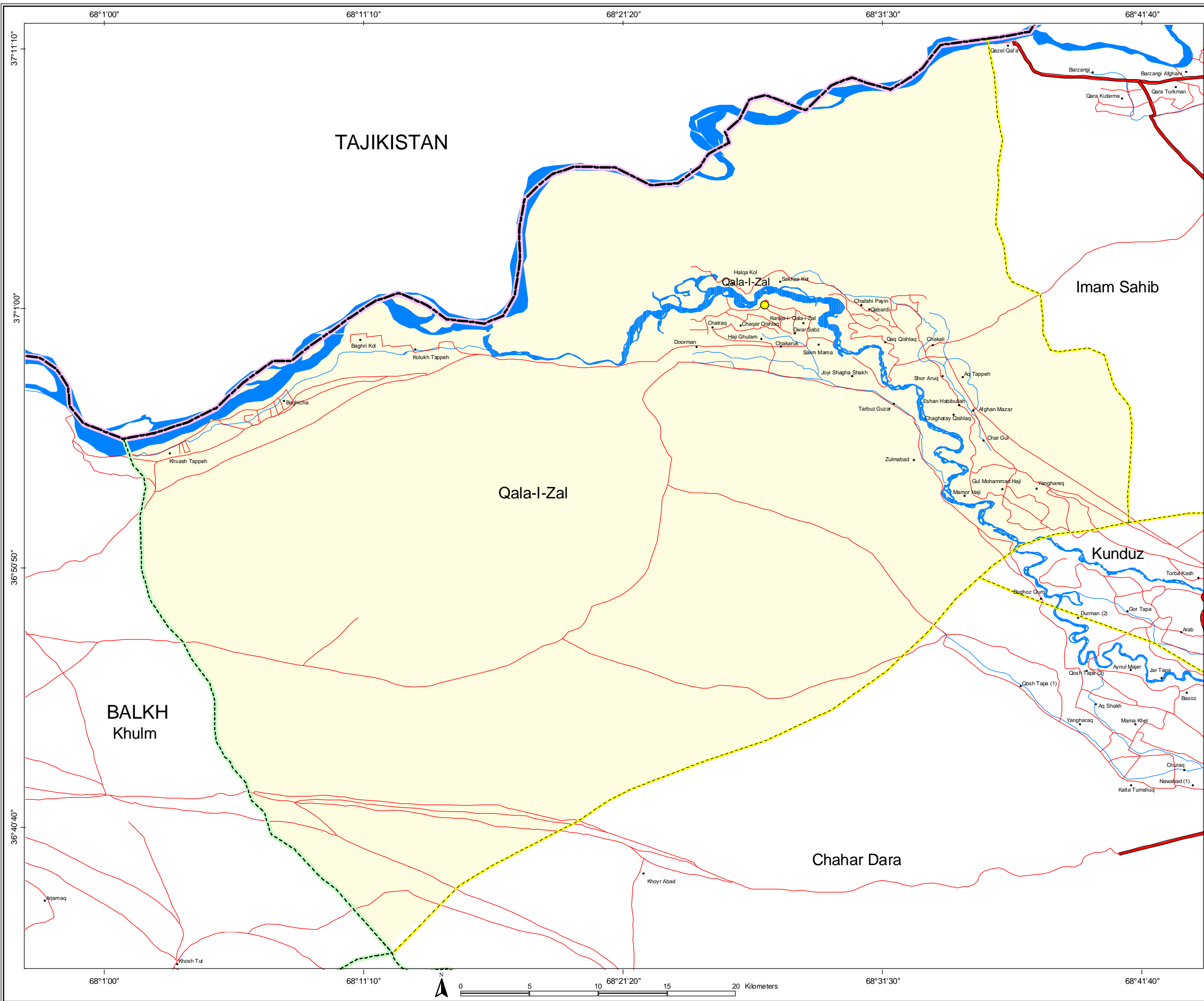


NOTE:

The boundaries and names on the maps do not imply official endorsement or acceptance by the United Nations.

For further information contact AIMS
e-mail: info@hic.org.pk





Qala-i- Zal District
Kunduz Province
AFGHANISTAN



LEGEND

- SETTLEMENTS**
- Capital
 - Province Center
 - District Center
 - Villages
- BOUNDARIES**
- International
 - Provincial
 - District
- ROADS**
- primary
 - secondary
 - Track
- Drainage**
- River
 - Stream
 - Lake

NOTE
The boundaries & names on the map do not imply Official Endorsement Or Acceptance by the United Nation.
For Standardization purpose AIMS uses the 32 Province 329 District boundary model.
For further information contact AIMS
E-mail: info@aims.org.af
Web site: www.aims.org.af
Coordinates: Geographic Decimal Degree
Datum: WGS 84
Date: January 2004

LOCATION DIAGRAM

