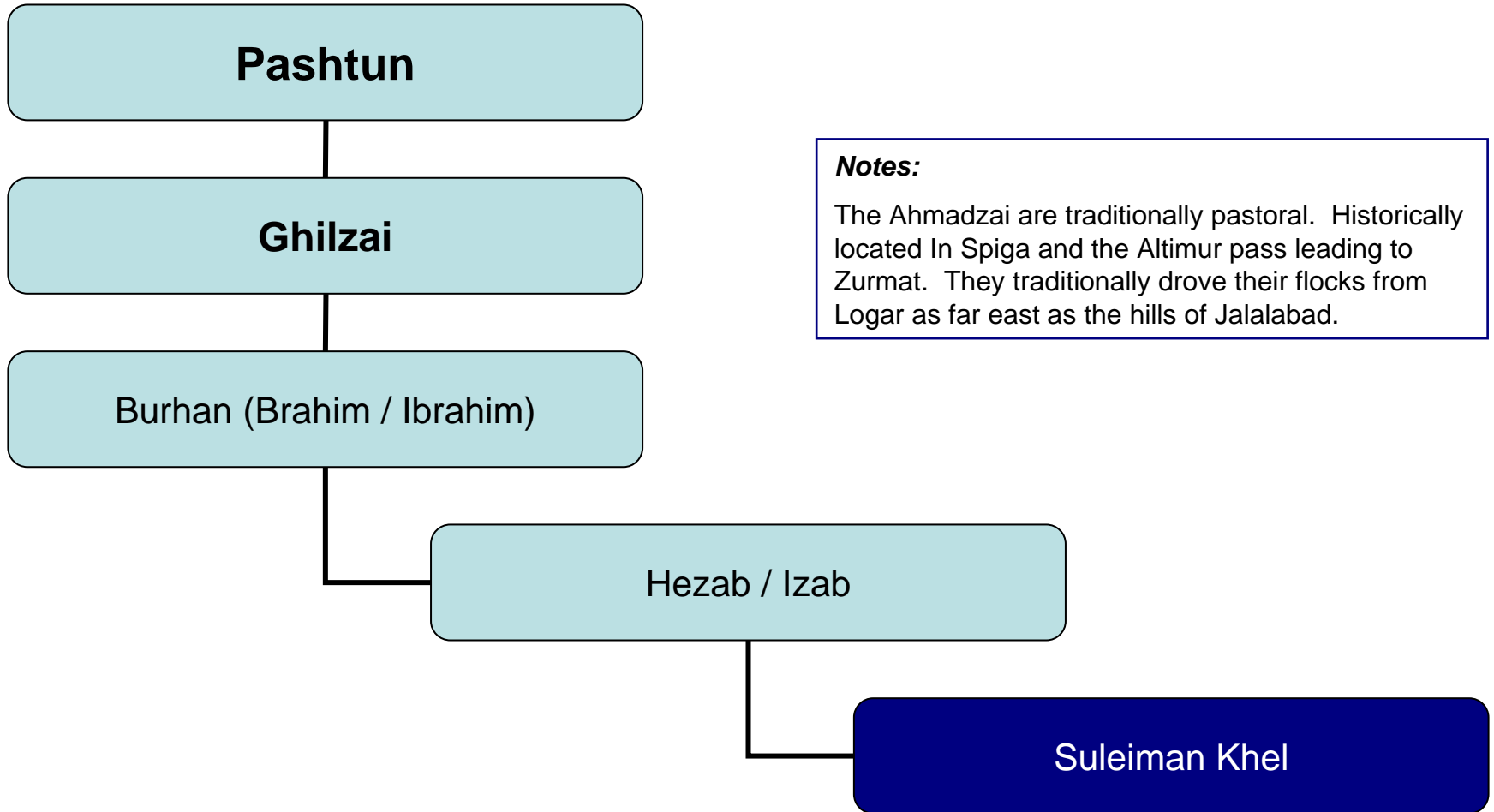


Ahmadzai Khel



Notes:
 The Ahmadzai are traditionally pastoral. Historically located in Spiga and the Altimur pass leading to Zurmat. They traditionally drove their flocks from Logar as far east as the hills of Jalalabad.

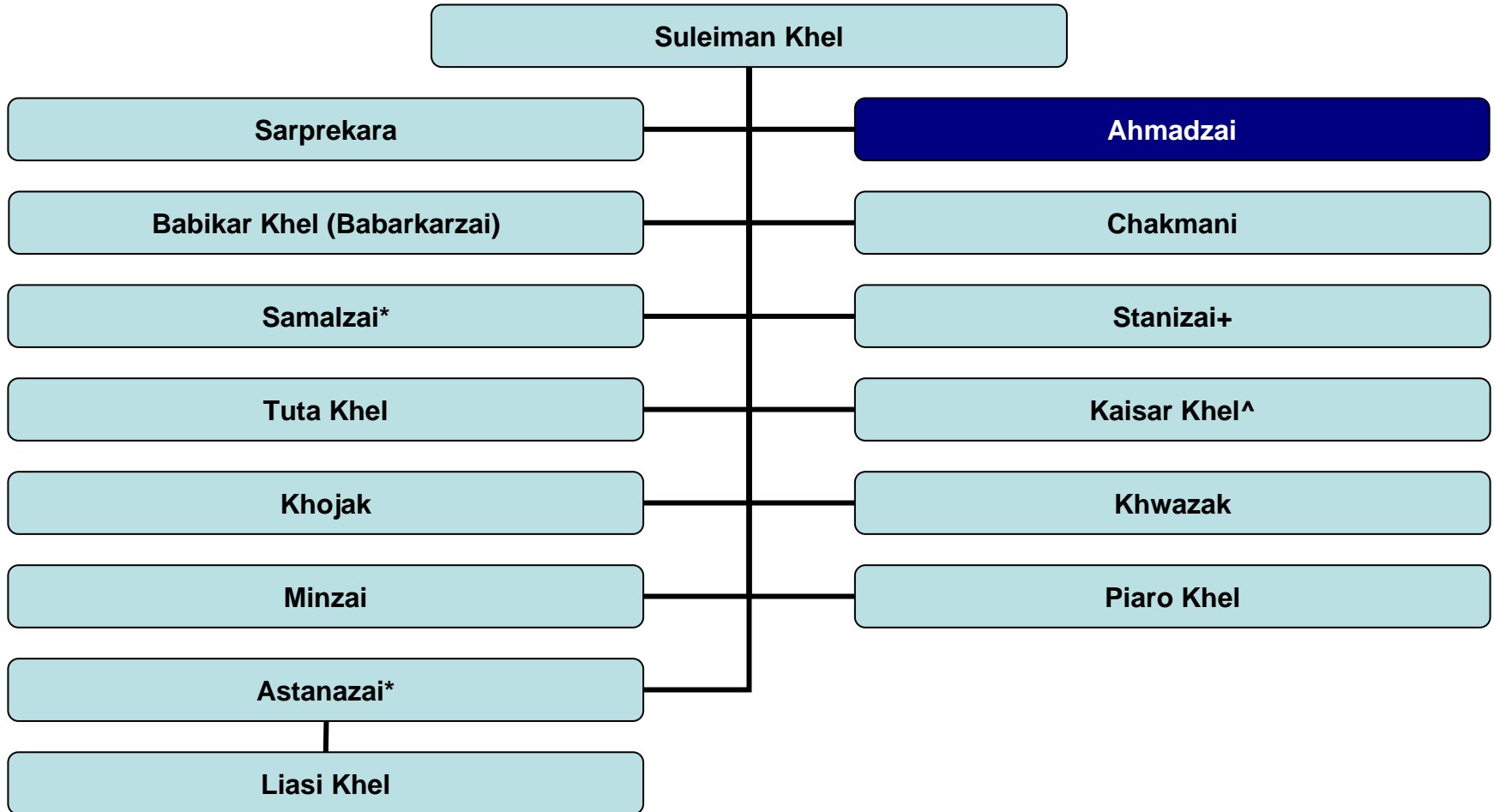
Reference:
 Notes on Nomad Tribes of Eastern Afghanistan, 1934
 Historical & Political Gazetteer of Afghanistan, Vol. 6, Pg.20

(Click Blue box to continue to next segment.)



Ahmadzai

Descendant of Suleiman Khel



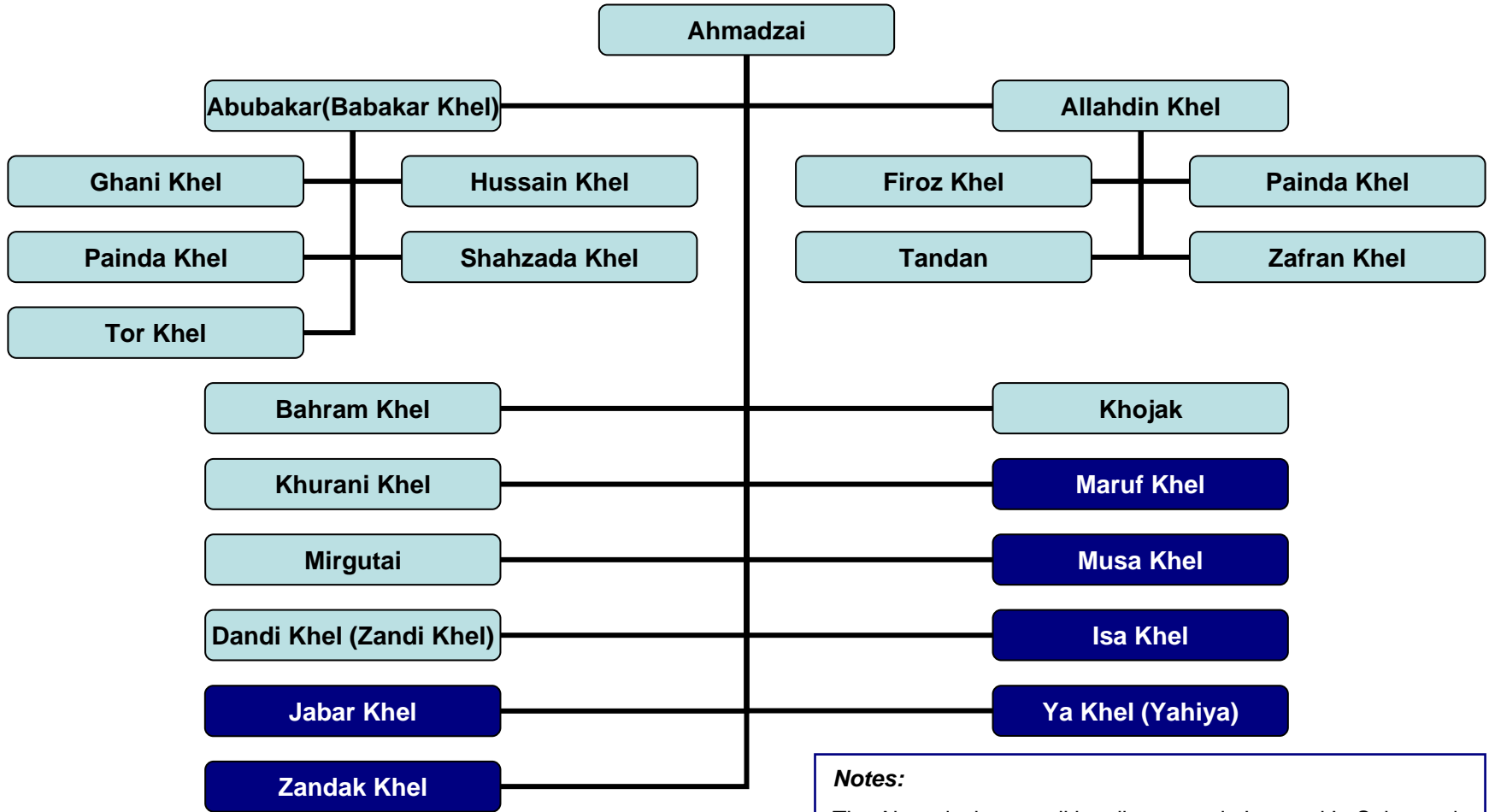
Reference:

Notes on Nomad Tribes of Eastern Afghanistan, 1934
Historical & Political Gazetteer of Afghanistan, Vol. 6, Pg.20

(Click Blue box to continue to next segment.)²

Ahmadzai

Descendant of Suleiman Khel

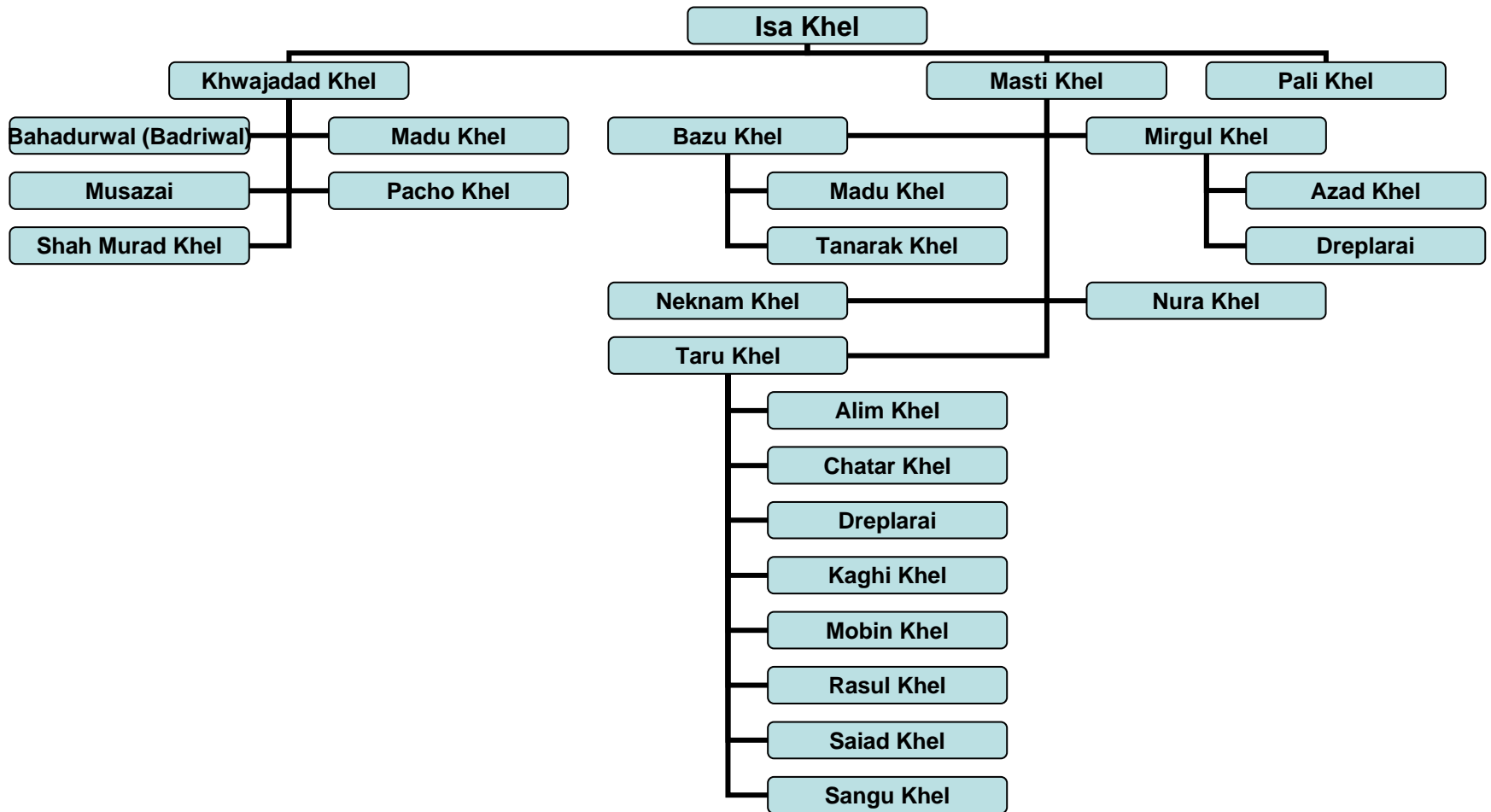


Notes:
 The Ahmadzai are traditionally pastoral. Located In Spiga and the Altimur pass leading to Zurmat. They traditionally drove their flocks from Logar as far east as the hills of Jalalabād.

Reference:
 Notes on Nomad Tribes of Eastern Afghanistan, 1934
 Historical & Political Gazetteer of Afghanistan, Vol. 6, Pg.20

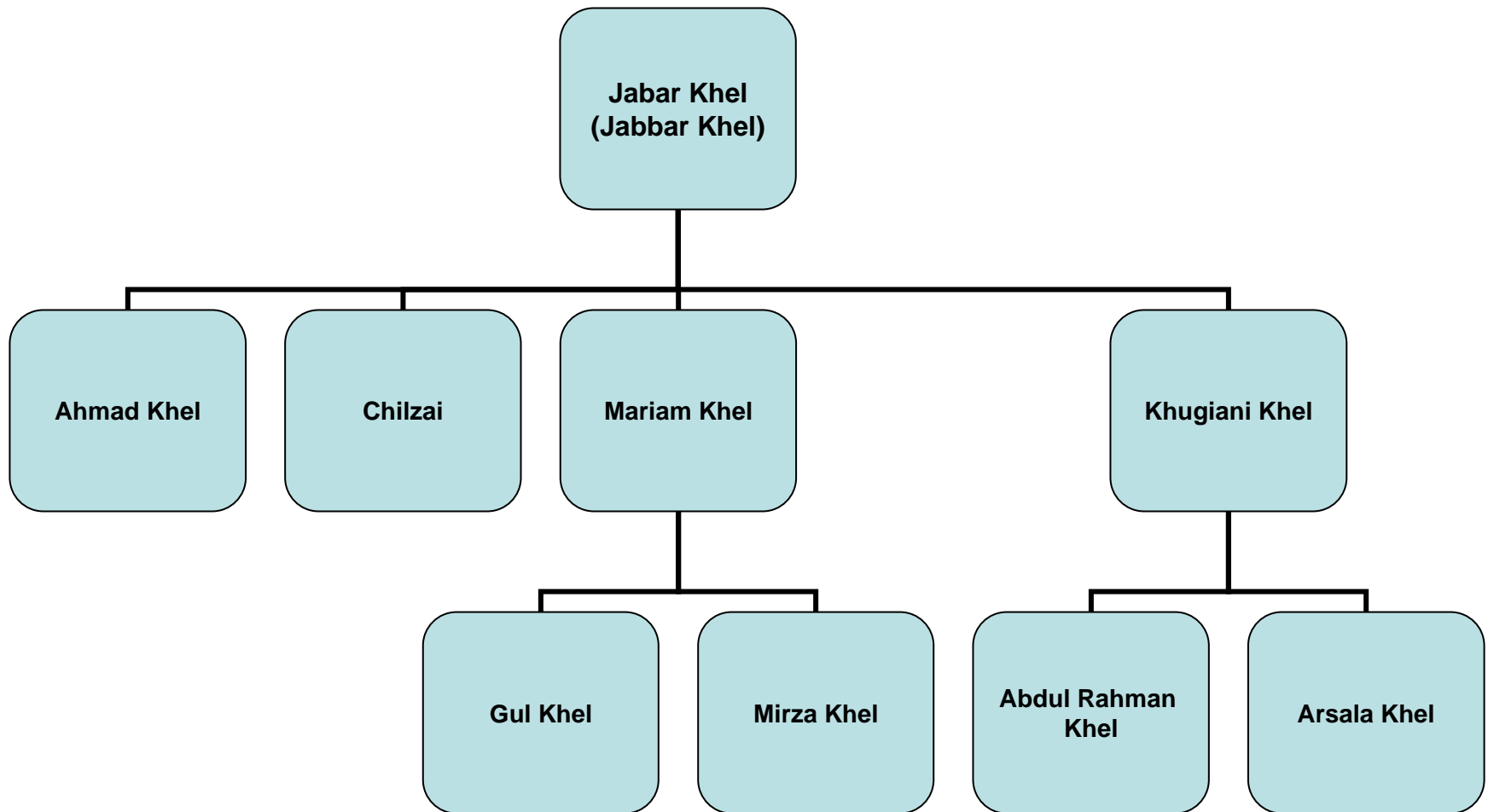
Isa Khel

Descendant of Ahmadzai



Jabar Khel

Descendant of Ahmadzai

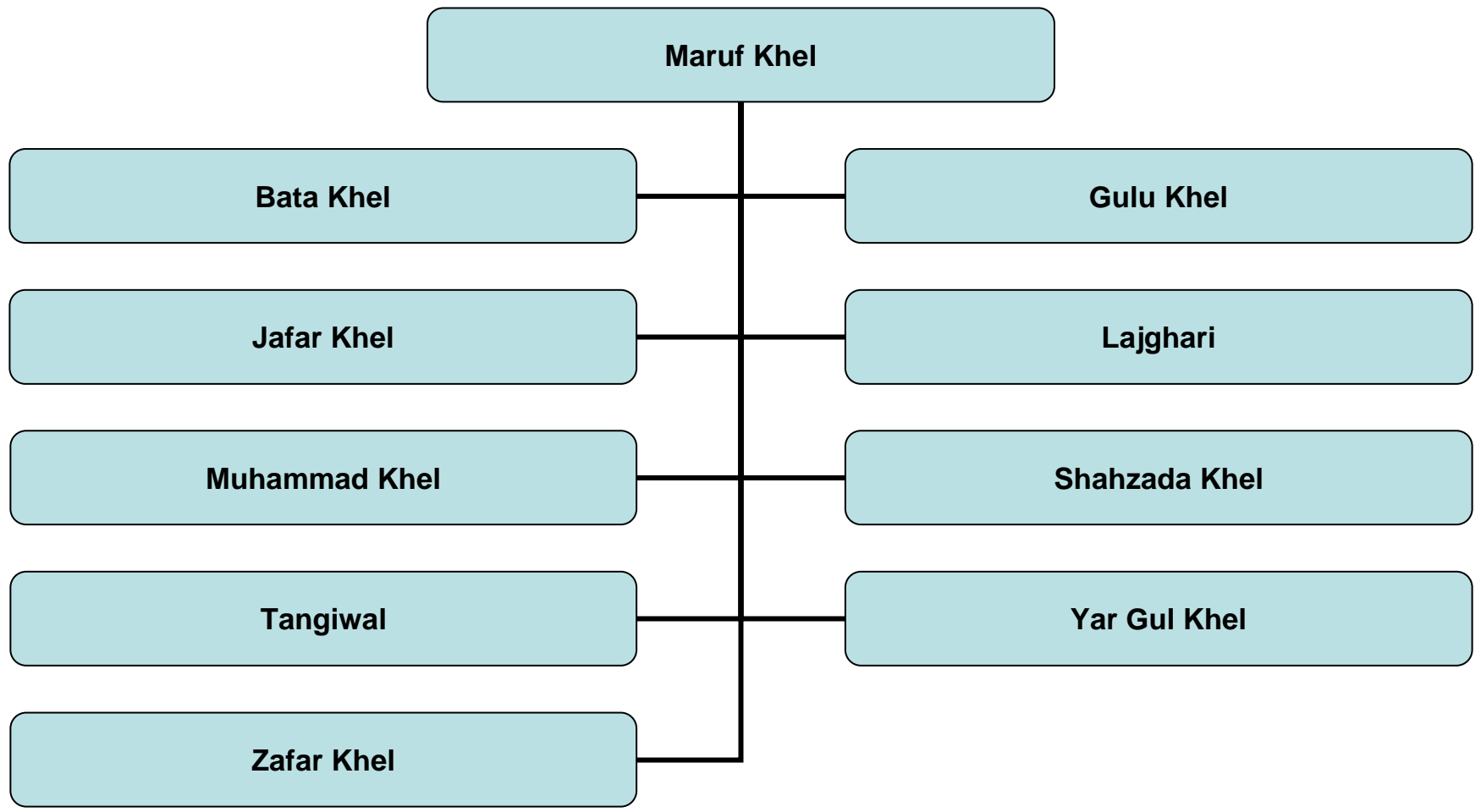


Reference:

Notes on Nomad Tribes of Eastern Afghanistan, 1934
 Historical & Political Gazetteer of Afghanistan, Vol. 6;

Maruf Khel

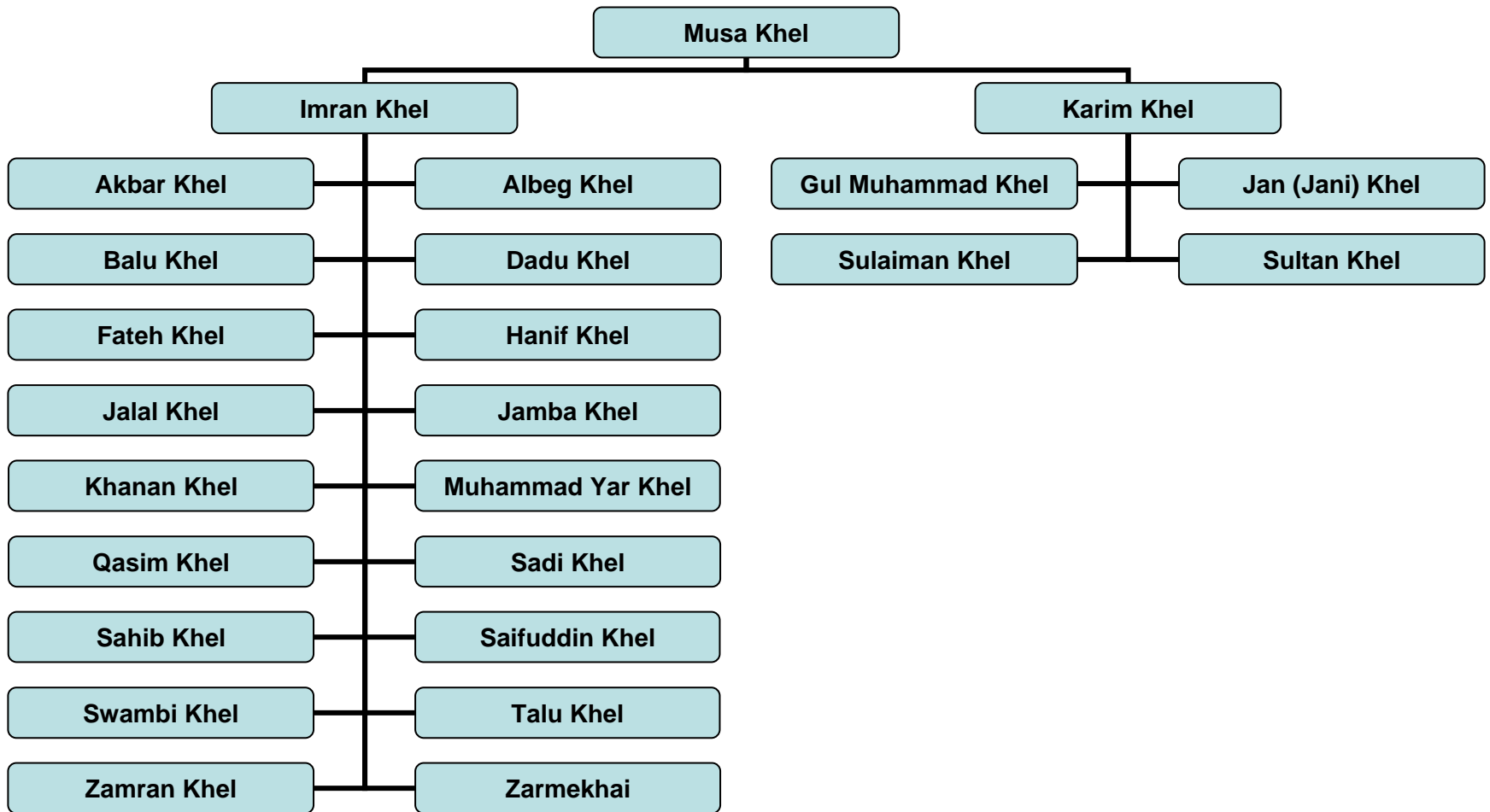
Descendant of Ahmadzai



Reference: Notes on Nomad Tribes of Eastern Afghanistan, 1934

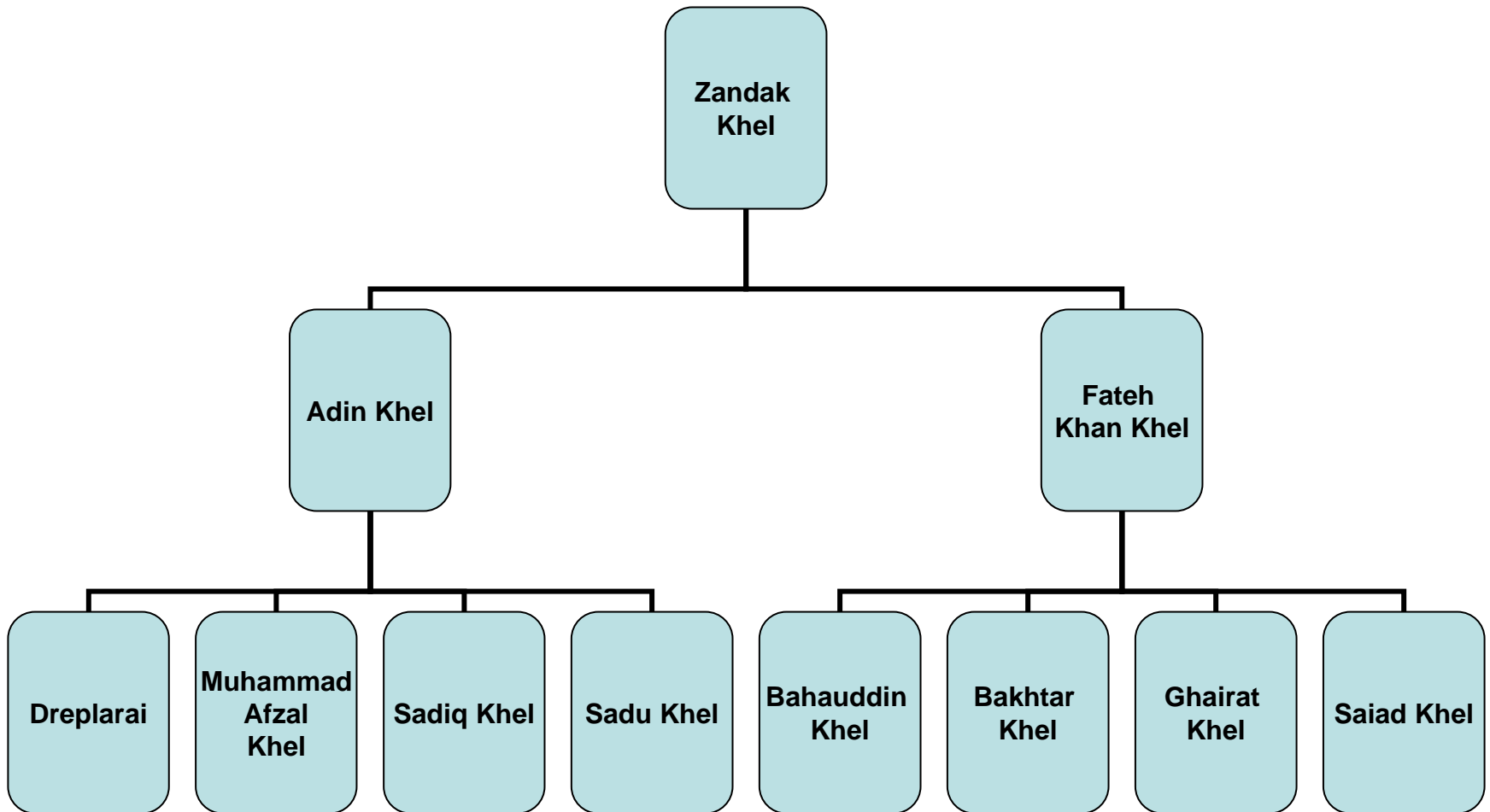
Musa Khel

Descendant of Ahmadzai



Zandak Khel

Descendant of Ahmadzai



Ya Khel

Descendant of Ahmadzai

