



NAVAL
POSTGRADUATE
SCHOOL

DIRECTORATE for SAFETY, HEALTH AND ENVIRONMENTAL

The Nation's Premiere Defense Research University

Monterey, California
WWW.NPS.EDU





1. Our Mission
2. Local Awareness
3. Tobacco Policy
4. PPE
5. Ergonomics
6. Lead and Asbestos
7. Reproductive Hazards
8. Bloodborne Pathogens
9. HAZCOM
10. Confined Space Entry
11. Fall Protection
12. Hazardous Energy Control
13. Required Training and ESAMS
14. Optional Trainings Available
 - a) Motorcycle Training
 - b) CPR, AED 1st Aid
15. Reporting Mishaps
16. Hazard Reporting
17. Safety Website
(<https://my.nps.edu/web/safety>)
18. Where we are Located
19. Safety Contacts



Our Mission

It is the mission of the NPS Occupational Safety, Health, and Environmental (OSHE) Directorate to save lives and provide academic and research readiness. We accomplish this mission through the use of leading indicators – proactive, preventive and predictive measures to identify risks and mediate them through process improvement measures.

Readiness Through Safety





Dangerous Beaches on the Peninsula

- Local beaches, particularly Carmel River Beach and Monastery Beach, are subject to strong waves that can sweep you off of your feet and carry you out to sea.
- It happens to several people every year, and nearly all of them are tourists from inland areas; they don't realize what the surf can do.
- Some beaches are reasonably safe for wading, but never be deceived.
- Its incoming force can knock you down and the outgoing pull will suck you away before you know what hit you. Entire families have been lost this way.
- When walking along the beach, it is easiest to walk on the firmer wet sand closest to the water, but keep your eye on the waves.
- If you see a big one coming, move inland quickly. If you're climbing on rocks and viewing tidepools, don't venture too far out, and always know your escape route.



Local Installation Hazards

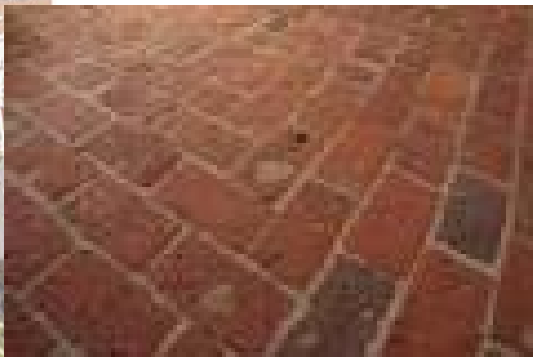
- Geese roam, eat and fly within our beautiful grounds but they can be annoying at times and create a mess. Do not feed the geese. If you see an aggressive geese, stay away. It may be due to their nesting season and they are very protective of their young. State and federal agencies strictly regulate any activity that results in the death of geese. A Federal Permit is necessary from the state to destroy or remove eggs and nests.





Local Installation Hazards

- Historical stairs & steps can be slippery. Caution should be taken when using them and handrails should always be used. Extra precautions should be taken when wearing high heels.
- Uneven sidewalks and paths are located in some areas within the installation. Always pay close attention to your surroundings. Look for items that may cause a trip hazard.
- Parking lots & roads can cause frustration at certain times of the day. Parking stalls are narrow and limited in some areas and several roads can be confusing. Be watchful and alert when driving inside the installation and at the annexes. Do not text and drive and avoid all types of distractive driving.





School Buses: **Both directions of traffic** must stop upon seeing red flashing lights on the bus.

Exception: 4 lane roads / boulevards.

Child Safety Seats: Required for children / infants **<age 6 or 60 lbs.**

Cell Phones: **Hands-Free** devices only.

Bicycles: **Helmets** required while riding on the installation.

Driving: - **Windshield wipers = Headlights**



**Second Hand Tobacco Smoke = 4,700
different chemical components including 43
cancer causing agents (EPA).**

Installation Policy:

- **Encourage tobacco abstinence**
- **Prohibited in government bldgs/veh.**
- **SECNAV: > 50 feet from all buildings.**





Personal Protective Equipment

1. **PPE = last line of defense.** Eliminate hazard / reduce risk thru engineering controls.
2. **Hearing Protection** @ noise levels > 84 dBA.
3. **Dust masks** require approval of the Respiratory Protection Program Manager (RPPM). mcatanese@nps.edu 656-3317.
4. **Lab/Machine Shop Work:** Emergency eyewash & shower stations. Safety eyewear.

Questions? Contact Lab Manager / NAVOSH IPD



Seek assistance before fatigue & discomfort become painful.

Fatigue



Discomfort

Proactive Ergonomics



Pain



Injury

Reactive Ergonomics



Disability

Ergonomic Assessments: Michelle Gomez, 656-3117 magomez@nps.edu



Lead and Asbestos

Lead Exposures: peripheral/neuropathy, kidney injuries, Reproductive effects, brain injury, bone marrow changes.

Asbestos Exposures: Mesothelioma, lung cancer.

Our facilities pre-date lead and asbestos product bans in construction materials.

Report damage to labeled asbestos products.

Presume lead is present in all paints.





Reproductive Hazards

- 1. Various chemical, physical, and biological stressors are hazardous to the human reproductive system.**
- 2. NPS Examples: lead, toluene, carbon monoxide, and isopropyl alcohol, excessive high levels of noise**
- 3. Use requires: monitoring, training & Possible M.D. counseling.**



Bloodborne Pathogens

1. All blood and bodily fluids shall be considered to be potentially infected with viruses and bacteria.
2. Utilize PPE during the provision of First Aid service.
3. **Report exposure** incidents to the NAVOSH IPD.



Bloodborne Pathogens



Hazardous Communication

Standard = 29 CFR 1910.1200.





Hazardous Communication

Training Requirements:

- Chemical Specific
- SDS review
- HM Program Overview
- Proper Labeling: ID, MFG, POC, Expiration Date
- Proper Storage





Hazardous Communication

Globally Harmonized System (GHS):

Changes to OSHA's Hazard Communication Standard are bringing the United States into alignment with the Globally Harmonized System of Classification and Labelling of Chemicals (GHS), further improving safety and health protections for our workers. The new standard still requires chemical manufacturers and importers to evaluate the chemicals they produce or import and provide hazard information to employers and workers by putting labels on containers and preparing safety data sheets. However, the old standard allowed chemical manufacturers and importers to convey hazard information on labels and material safety data sheets in whatever format they chose. The modified standard provides a single set of harmonized criteria for classifying chemicals according to their health and physical hazards and specifies hazard communication elements for labelling and safety data sheets.



GHS Pictograms and Hazards

Gas Cylinder



- Gases Under Pressure

Corrosion



- Skin Corrosion/
Burns
- Eye Damage
- Corrosive to Metals

Exploding Bomb



- Explosives
- Self-Reactives
- Organic Peroxides

Flame Over Circle



- Oxidizers

Environment (Non-Mandatory)



- Aquatic Toxicity

Skull and Crossbones



- Acute Toxicity
(fatal or toxic)



GHS Pictograms and Hazards

Health Hazard



- Carcinogen
- Mutagenicity
- Reproductive Toxicity
- Respiratory Sensitizer
- Target Organ Toxicity
- Aspiration Toxicity

Flame



- Flammables
- Pyrophorics
- Self-Heating
- Emits Flammable Gas
- Self-Reactives
- Organic Peroxides

Exclamation Mark

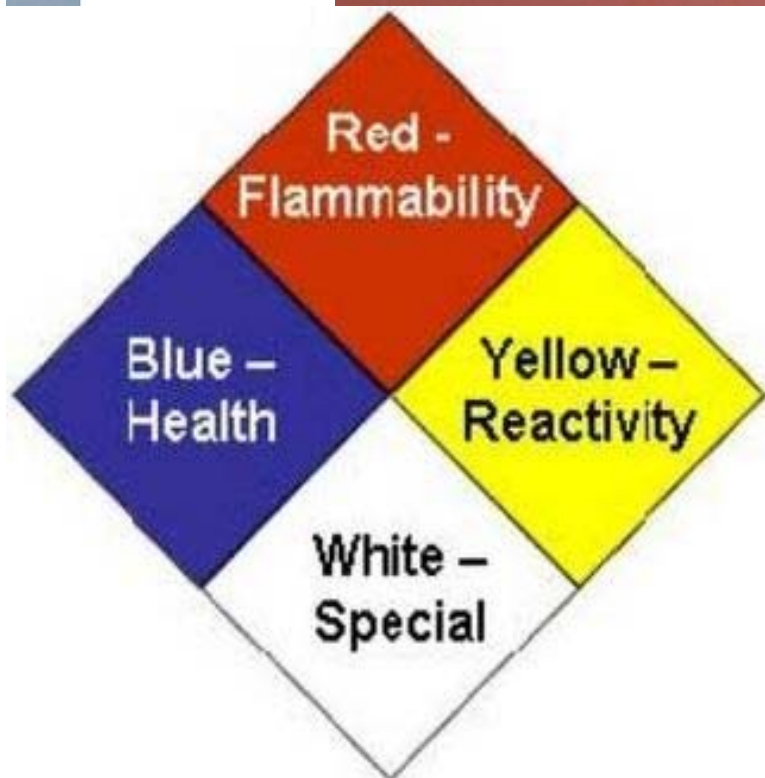


- Irritant (skin and eye)
- Skin Sensitizer
- Acute Toxicity (harmful)
- Narcotic Effects
- Respiratory Tract Irritant
- Hazardous to Ozone Layer (Non-Mandatory)



Examples of Old Symbols

NANOMEMIS





Examples of Old Symbols

Chemical purchase & use only through base HM program.



Kathy Franklin, HM Coordinator, kfranklin@nps.edu, 656-7661



Confined Space Entry Program

Confined Space = Enclosures with limited means of entry/exit that are not designed for continuous occupancy.

- 1. Examples: Storage tanks, pits, vats, boilers, fuel cells, sewers, underground utility vaults, tunnels, and manholes.**
- 2. Report unlabeled spaces.**
- 3. ENTRY IS PROHIBITED!!**





Fall Protection Program

1. **Fall protection required for working at unprotected heights in excess of 4 ft.**
2. **Fall protection: guardrail systems, work platforms, safety net systems, personal fall arrest systems, work positioning systems, fall restraint systems, ladder climbing safety devices, etc.**
3. **Required: Written Plan and Training.**
4. **Fall Protection Program Coordinator: Jennifer Keefer
(831)656-3465**



Hazardous Energy Controls

- **Only authorized and trained employees may engage in tasks that require use of lockout-tagout procedures.**
- **All equipment has a single source of electrical power.**
- **Lockout procedures must be in place for all equipment and processes.**
- **Restoration from Lockout is a controlled operation.**



ESAMS Required Training

Enterprise Safety Applications Management System (ESAMS) is to be utilized by all NPS Staff and Faculty to train, maintain NAVOSH program records, and maintain a safety culture that pervades all aspects of mission accomplishment. ALL NPS Staff and Faculty are required to receive the following Safety Trainings:

- 1. NAVOSH Orientation (ESAMS Course #1356)
- 2. General Ergonomics Awareness (ESAMS Course #371) or Ergonomics Awareness Training for Supervisors (372)
- 3. Individual-Managing Your Risk (ORM) (ESAMS Course #3454). This is a Tri-Annual requirement.
- 4. Individual Managing your Risk Refresher - Equivalent. (ESAMS Course #5423) This is an annual requirement and training requirement may be met through departmental safety talks although it must be logged in ESAMS in order to record that training was completed.

Staff and Faculty may also require lab/hazard specific trainings depending on their the work they are engaged in.



CPR, AED, 1st Aid Training

American Red Cross training available upon request

Priority given to staff personnel requiring training.

P.O.C.:

Ms. Michelle Gomez

magomez@nps.edu

656-3117





Motorcycle Safety Training

Level I Training = 15 hours – (Basic Rider Course)

**Level II Training = 8 hours – (Experienced Rider Course,
Motorcycle Sportbike Rider Course, Advanced Rider Course)**

Motorcycle safety training not required for civilians.

Course scheduling and registration:

www.navymotorcyclerider.com

**For more information visit , call, or email the Safety office in
Bld. 285**



Reporting Mishaps

What is a mishap? Any work related injury should be reported.

Ways to Report:

- **Online "Report a Mishap" Form** - We have created an Online Form accessible from our safety site <https://my.nps.edu/web/safety/mishap-reporting> that all NPS personnel can utilize.
- **ESAMS** - NPS Staff and faculty can access [ESAMS](#) to report an "unhealthy employee working condition".



Hazard Reporting

It is critically important that NPS Personnel report all hazards to the safety office. We want to investigate and mediate any hazard discovered to prevent mishaps! There are multiple ways to report:

- [Online Form to Report a Hazard](#) that all NPS personnel can utilize.
- [Unsafe/Unhealthful Reporting Forms](#) are available on all Departmental Safety Bulletin boards. Completed forms may be dropped off at our offices, Faxed to 831-656-7710, or emailed to Safety@nps.edu.
- Personnel can access [ESAMS](#) to report an "unhealthy employee working condition"
- [Or just come see us in person!](#)



We have a new Safety Website which can be accessed off of the [main intranet page](https://my.nps.edu/web/safety/index):
<https://my.nps.edu/web/safety/index>

It has been remade to be much more user friendly with easier access to training information, safety references, and program specific information.

All of the information discussed today (and far more) may be found on this site.



NAVAL
POSTGRADUATE
SCHOOL

Where We are Located





NPS OSHE Directorate
Bldg. 285 (Quarters N)
(831) 656-7758
safety@nps.edu

Full list of Safety Office Personal
available on the website:

<https://my.nps.edu/web/safety/index>